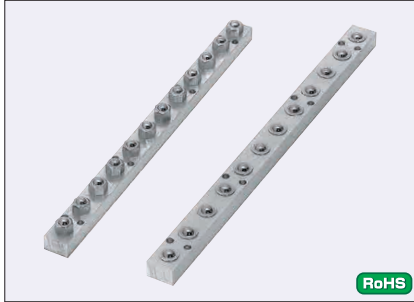




# Ball Roller Units (For upward facing)

# Ball Rollers (For upward facing)

Milled Steel / Steel Press Formed



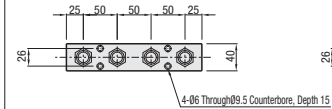
Type	Ball Roller		Material				Frame
	Shape	Part Number (P1045)	Bearing	Spacer	Main Ball	Sub Ball	
BUHL	Hex Head Stud	BCHL16	SUS304	SUS304	SUS440C(HRC55~)	SUS440C(HRC55~)	A6063 (Clear Anodize)
BUHA	Press Fit	BCHA24	SUS304	SUS304	SUS440C(HRC55~)	SUS440C(HRC55~)	A6063 (Clear Anodize)

For details on Ball Rollers, see P.1179.

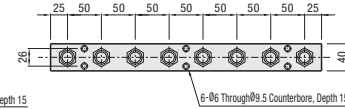
## Hex Head Stud

**BUHL**  
(Stainless Steel Ball)

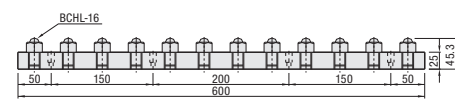
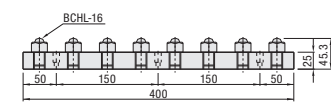
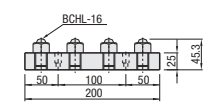
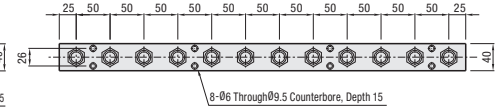
• Overall Length 200



• Overall Length 400



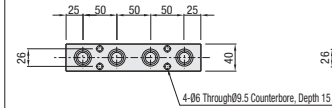
• Overall Length 600



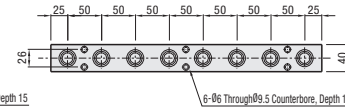
## Press Fit

**BUHA**  
(Stainless Steel Ball)

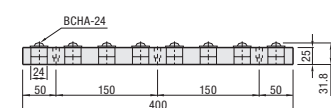
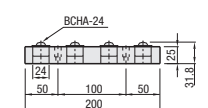
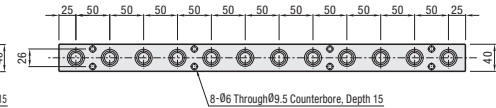
• Overall Length 200



• Overall Length 400



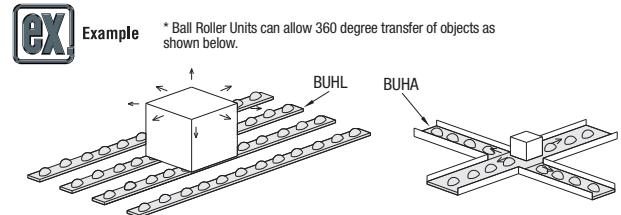
• Overall Length 600



Part Number Type	Overall Length	Number of Rollers	Unit Price	
			BUHL	BUHA
Hex Head Stud BUHL (Stainless Steel Ball)	200	4		
Press Fit BUHA (Stainless Steel Ball)	400	8		
	600	12		

Allowable Load per Ball Roller	
Type	Allowable Load N (kgf)
BUHL BUHA	343 (35)

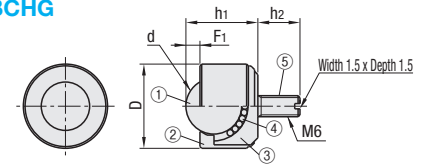
Ordering Example Part Number **BUHL200**



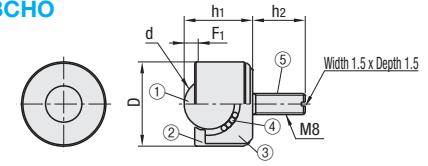
## Milled Threaded Stud Type



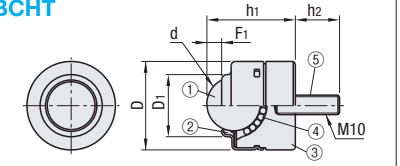
### BCHG



### BCHO



### BCHT



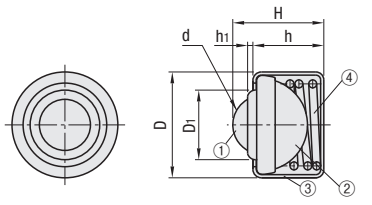
Type	Material				
	① Main Ball	② Cover	③ Bearing	④ Sub Ball	⑤ Threaded Section
BCHG	SUJ2	SS400 Equivalent	SCM415	SUJ2	SCM415
BCHO		SPCD			SCM435
BCHT					

Part Number		D	D1	d	h1	h2	F1	Allowable Load N (kgf)	Unit Price
Type	No.								
BCHG	24	24	-	15.875	20.5	12	4	196.1(20)	
BCHO	32	32	-	19.05	26	20	4	490.3(50)	
BCHT	42	42	31.3	25.40	42	21	7.4	784.5(80)	

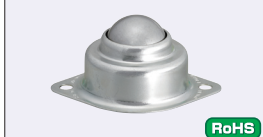
## Built-in Spring Type



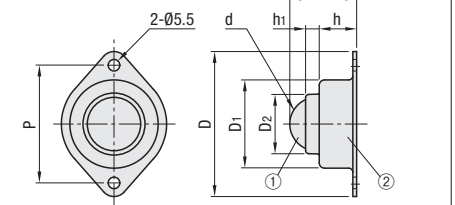
### BCHW (Built-in Spring Type)



## Press Formed Flange Mounting Type



### BCHY (Flange Mounting Type)



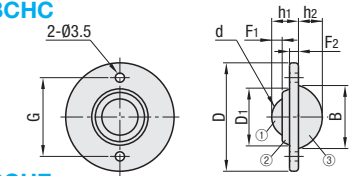
Type	Material			
	① Main Ball	② Bearing	③ Frame	④ Spring
BCHW	SUJ2	SPCD	SPCE	SWP-A
BCHY	SWRM12			

Part Number		D	D1	D2	d	H	h	h1	P	Spring Ball Movement	Allowable Load N (kgf)	Unit Price
Type	No.											
BCHW	20	20	13	-	11.113	17.2	13.4	2.8	-	1.8	49(5kg)	
	26	25.8	17.5	-	15.875	23.6	17.5	3.7	-	2	78(8kg)	
BCHY	69	69	42	29.5	25.40	31	17	7.5	56	-	294(30kg)	

## Press Formed Screw Mounted Threaded Stud Type

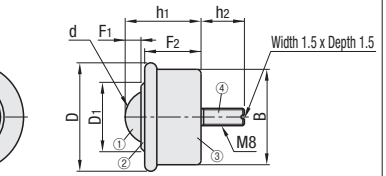


### BCHC

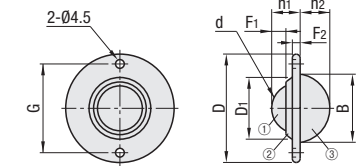


### BCHH

### BCHH



### BCHH



Type	Material			
	① Main Ball	② Cover	③ Bearing	④ Threaded Section
BCHC	SWRM12	SPCD	SUS304	-
BCHH			SPCC Equivalent	SS400 Equivalent

Part Number		D	D1	d	G	B	h1	h2	F1	F2	Allowable Load N (kgf)	Unit Price
Type	No.											
BCHC	40	41.3	22	15.875	30	24	10.2	9.1	4	3.4	78.5(8)	
BCHH	55	55.5	32.5	25.40	45.5	36	14.6	15.2	7.3	4	294.2(30)	
BCHH	50	50	32	25.40	-	44	35	20	7.3	26	294.2(30)	

Ordering Example Part Number **BCHW 20**