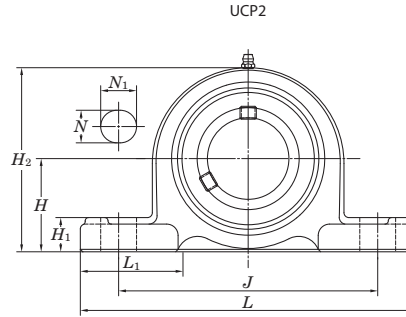
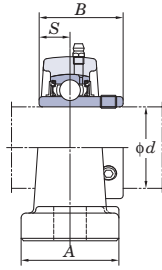
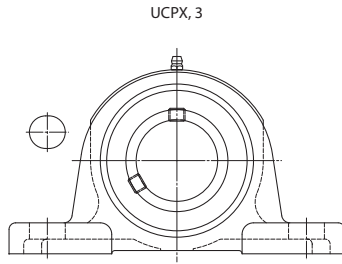


UCP
Cylindrical bore (with set screws)
d 12 ~ (45) mm

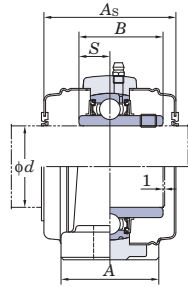


Shaft Dia. mm inch		Dimensions											Bolt Size inch mm	Standard		
		inch mm												Unit No.	Housing No.	Bearing No.
d		H	L	A	J	N	N ₁	H ₁	H ₂	L ₁	B	S				
12	1/2	1 3/16	5	1 1/2	3 3/4	1/2	23/32	5/8	2 3/8	1 13/32	1.220	0.500	3/8 M10	UCP201 UCP201-8 UCP202 UCP202-10 UCP203	P203	UC201 UC201-8 UC202 UC202-10 UC203
	15	30.2	127	38	95	13	18	16	60	36	31	12.7				
	5/8															
17	3/4	1 5/16	5	1 1/2	3 3/4	1/2	23/32	5/8	2 9/16	1 13/32	1.220	0.500	3/8 M10	UCP204-12 UCP204	P204	UC204-12 UC204
	20	33.3	127	38	95	13	18	16	65	36	31	12.7				
25	7/8	1 7/16	5 1/2	1 1/2	4 1/8	1/2	23/32	5/8	2 3/4	1 1/2	1.343	0.563	3/8 M10	UCP205-14 UCP205-15 UCP205 UCP205-16	P205	UC205-14 UC205-15 UC205 UC205-16
	15/16	36.5	140	38	105	13	18	16	70	38	34.1	14.3				
	1	1 3/4	6 1/4	2	4 11/16	21/32	31/32	5/8	3 3/8	1 27/32	1.500	0.626	1/2 M14	UCPX05 UCPX05-16	PX05	UCX05 UCX05-16
	1	44.4	159	51	119	17	25	16	86	47	38.1	15.9				
1	1 49/64	6 7/8	1 3/4	5 3/16	21/32	25/32	5/8	3 11/32	2 5/32	1.496	0.591	1/2 M14	UCP305 UCP305-16	P305	UC305 UC305-16	
1	45	175	45	132	17	20	16	85	55	38	15					
30	1 1/8	1 11/16	6 1/2	1 7/8	4 3/4	21/32	13/16	21/32	3 5/16	1 7/8	1.500	0.626	1/2 M14	UCP206-18 UCP206 UCP206-19 UCP206-20	P206	UC206-18 UC206 UC206-19 UC206-20
	1 3/16	42.9	165	48	121	17	21	17	84	48	38.1	15.9				
	1 1/4															
	1 3/16	1 7/8	6 7/8	2 1/4	5	21/32	31/32	21/32	3 21/32	2 5/32	1.689	0.689	1/2 M14	UCPX06 UCPX06-19 UCPX06-20	PX06	UCX06 UCX06-19 UCX06-20
	1 1/4	47.6	175	57	127	17	25	17	93	55	42.9	17.5				
1	1 31/32	7 3/32	1 31/32	5 1/2	21/32	25/32	21/32	3 3/4	2 3/32	1.693	0.669	1/2 M14	UCP306	P306	UC306	
1	50	180	50	140	17	20	17	95	53	43	17					
35	1 1/4	1 7/8	6 9/16	1 7/8	5	21/32	13/16	23/32	3 3/4	1 27/32	1.689	0.689	1/2 M14	UCP207-20 UCP207-21 UCP207-22 UCP207 UCP207-23	P207	UC207-20 UC207-21 UC207-22 UC207 UC207-23
	1 5/16	47.6	167	48	127	17	21	18	95	47	42.9	17.5				
	1 3/8															
	1 7/16	2 1/8	8	2 1/4	5 21/32	21/32	1 3/16	3/4	4 1/8	2 17/32	1.937	0.748	1/2 M14	UCPX07-22 UCPX07 UCPX07-23	PX07	UCX07-22 UCX07 UCX07-23
	1 3/8	54	203	57	144	17	30	19	105	64	49.2	19				
1	2 13/64	8 9/32	2 7/32	6 5/16	21/32	31/32	3/4	4 7/32	2 9/16	1.890	0.748	1/2 M14	UCP307	P307	UC307	
1	56	210	56	160	17	25	19	107	65	48	19					
40	1 1/2	1 15/16	7 1/4	2 1/8	5 13/32	21/32	13/16	23/32	3 27/32	2 3/32	1.937	0.748	1/2 M14	UCP208-24 UCP208-25 UCP208	P208	UC208-24 UC208-25 UC208
	1 9/16	49.2	184	54	137	17	21	18	98	53	49.2	19				
	1 1/2	2 5/16	8 3/4	2 5/8	6 5/32	25/32	1 1/4	13/16	4 1/2	2 25/32	1.937	0.748				
1 1/2	2 23/64	8 21/32	2 3/8	6 11/16	21/32	1 1/16	3/4	4 21/32	2 9/16	2.047	0.748	1/2 M14	UCP308-24 UCP308	P308	UC308-24 UC308	
1 1/2	60	220	60	170	17	27	19	118	65	52	19					
45	1 5/8	2 1/8	7 15/32	2 1/8	5 3/4	21/32	13/16	25/32	4 3/16	2 5/32	1.937	0.748	1/2 M14	UCP209-26 UCP209-27 UCP209-28 UCP209	P209	UC209-26 UC209-27 UC209-28 UC209
	1 11/16	54	190	54	146	17	21	20	106	55	49.2	19				
	1 3/4															
1 11/16	2 5/16	8 3/4	2 5/8	6 5/32	25/32	1 5/16	13/16	4 9/16	2 25/32	2.031	0.748	5/8 M16	UCPX09-27 UCPX09-28 UCPX09	PX09	UCX09-27 UCX09-28 UCX09	
1 3/4	58.7	222	67	156	20	33	21	116	71	51.6	19					

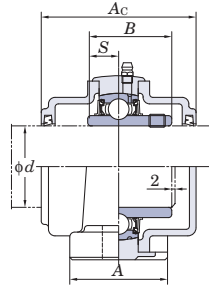
Remarks 1. In Part No. of unit and units with covers, fitting codes follow bore diameter numbers. (See Table 10.5 in P.62.)
 2. Part No. of applicable grease fittings are shown below.
 A-1/4-28UNF 201~210, X05~X09, 305~308
 A-R1/8 211~218, X10~X20, 309~328



With Pressed Steel Cover



With Cast Iron Cover

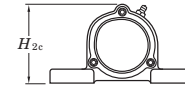


Variations of tolerance of distance from mounting bottom to center of spherical bore (ΔH_{2c})

Housing No.			ΔH_{2c}
P203~P210	PX05~PX10	P305~P310	± 0.15
P211~P218	PX11~PX18	P311~P318	± 0.2
	PX20	P319~P328	± 0.3

Unit: mm

Forms and dimensions of H_{2c} of P204JE3 and P205JE3 (housing with cast iron cover) are shown below.



P204JE3 $H_{2c} = 70$ mm
P205JE3 $H_{2c} = 77$ mm

Mass kg	Basic Load Ratings kN		Factor f_0	With Pressed Steel Cover				With Cast Iron Cover					
	C_r	C_{0r}		Unit No.		Dimension		Mass kg	Unit No.		Dimension		Mass kg
				Open Type	One Side Closed Type	mm	inch		Open Type	One Side Closed Type	mm	inch	
0.63	12.8	6.65	13.2	UCP201C	UCP201CD	45	1 25/32	0.63	-	-	-	-	-
0.63				-	-	-	-	-	-	-	-	-	-
0.61				UCP202C	UCP202CD	45	1 25/32	0.61	-	-	-	-	-
0.61				-	-	-	-	-	-	-	-	-	-
0.60				UCP203C	UCP203CD	45	1 25/32	0.60	-	-	-	-	-
0.66	12.8	6.65	13.2	-	-	-	-	-	-	-	-	-	
0.66				UCP204C	UCP204CD	45	1 25/32	0.66	UCP204FC	UCP204FCD	62	2 7/16	0.96
0.80	14.0	7.85	13.9	-	-	-	-	-	-	-	-	-	
0.80				-	-	-	-	-	-	-	-	-	
0.80				UCP205C	UCP205CD	49	1 15/16	0.80	UCP205FC	UCP205FCD	66	2 19/32	1.2
0.80				-	-	-	-	-	-	-	-	-	
1.5	19.5	11.3	13.9	UCPX05C	UCPX05CD	53	2 3/32	1.5	-	-	-	-	
1.5				-	-	-	-	-	-	-	-		
1.7	21.2	10.9	12.6	-	-	-	-	-	UCP305C	UCP305CD	76	3	2.3
1.7				-	-	-	-	-	-	-	-		
1.3	19.5	11.3	13.9	-	-	-	-	-	-	-	-	-	
1.3				UCP206C	UCP206CD	53	2 3/32	1.3	UCP206FC	UCP206FCD	70	2 3/4	1.8
1.3				-	-	-	-	-	-	-	-	-	
1.3				-	-	-	-	-	-	-	-		
2.1	25.7	15.4	13.9	UCPX06C	UCPX06CD	60	2 3/8	2.1	-	-	-	-	
2.1				-	-	-	-	-	-	-	-		
2.1				-	-	-	-	-	-	-	-		
2.2	26.7	15.0	13.3	-	-	-	-	-	UCP306C	UCP306CD	82	3 7/32	2.8
1.6	25.7	15.4	13.9	-	-	-	-	-	-	-	-	-	
1.6				-	-	-	-	-	-	-	-		
1.6				UCP207C	UCP207CD	60	2 3/8	1.6	UCP207FC	UCP207FCD	78	3 1/16	2.3
1.6				-	-	-	-	-	-	-	-		
1.6				-	-	-	-	-	-	-	-		
2.7	29.1	17.8	14.0	-	-	-	-	-	-	-	-	-	
2.7				UCPX07C	UCPX07CD	69	2 23/32	2.7	-	-	-	-	
2.7				-	-	-	-	-	-	-	-		
3.0	33.4	19.3	13.2	-	-	-	-	-	UCP307C	UCP307CD	88	3 15/32	3.8
2.0	29.1	17.8	14.0	-	-	-	-	-	-	-	-	-	
2.0				-	-	-	-	-	-	-	-		
2.0				UCP208C	UCP208CD	69	2 23/32	2.0	UCP208FC	UCP208FCD	86	3 3/8	2.8
3.5	34.1	21.3	14.0	-	-	-	-	-	-	-	-	-	
3.5				UCPX08C	UCPX08CD	69	2 23/32	3.5	-	-	-	-	
3.8	40.7	24.0	13.2	-	-	-	-	-	-	-	-	-	
3.8				-	-	-	-	-	UCP308C	UCP308CD	96	3 25/32	4.8
2.2	34.1	21.3	14.0	-	-	-	-	-	-	-	-	-	
2.2				-	-	-	-	-	-	-	-		
2.2				-	-	-	-	-	-	-	-		
2.2				UCP209C	UCP209CD	69	2 23/32	2.2	UCP209FC	UCP209FCD	88	3 15/32	3.0
2.2				-	-	-	-	-	-	-	-		
3.7	35.1	23.3	14.4	-	-	-	-	-	-	-	-	-	
3.7				-	-	-	-	-	-	-	-		
3.7				UCPX09C	UCPX09CD	74	2 29/32	3.7	-	-	-	-	

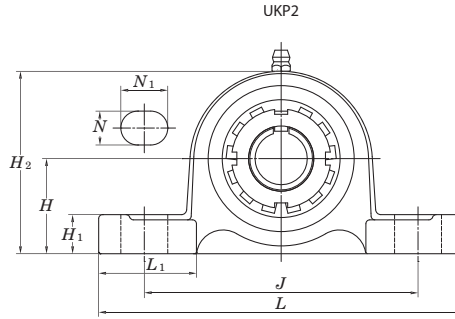
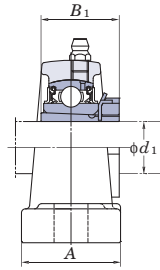
3. As for the triple seal type product (from 201 to 205 are the double seal type products), suffix code L3 (or L2) follows the Part No. of unit or bearing. (Example of Part No. : UCP206L3, UC206L3)

4. For the dimensions and forms of applicable bearings, see the dimensional tables of ball bearing for unit.

5. Representative examples of the forms of housing are indicated.

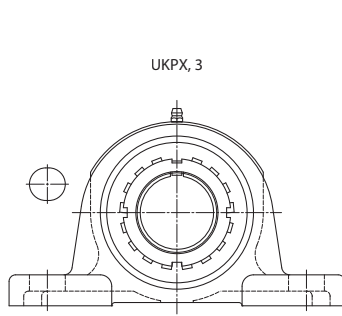
6. Housings of nodular graphite cast iron are also available.

UKP
Tapered bore (with adapter)
d₁ 20 ~ (50) mm

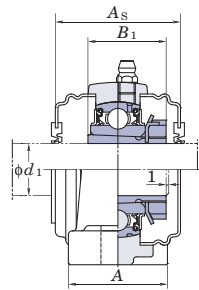


Shaft Dia. mm inch	Dimensions											Bolt Size inch mm	Standard			
	inch mm												Unit No.	Housing No.	Bearing No.	
d ₁	H	L	A	J	N	N ₁	H ₁	H ₂	L ₁	B ₁						
20	3/4	1 7/16 36.5	5 1/2 140	1 1/2 38	4 1/8 105	1/2 13	23/32 18	5/8 16	2 3/4 70	1 1/2 38	1 3/8 35	3/8 M10	UKP205	P205	UK205	
	3/4	1 3/4 44.4	6 1/4 159	2 51	4 11/16 119	21/32 17	31/32 25	5/8 16	3 3/8 86	1 27/32 47	1 3/8 35	1/2 M14	UKPX05	PX05	UKX05	
	3/4	1 49/64 45	6 7/8 175	1 3/4 45	5 3/16 132	21/32 17	25/32 20	5/8 16	3 11/32 85	2 5/32 55	1 3/8 35	1/2 M14	UKP305	P305	UK305	
25	1	1 11/16 42.9	6 1/2 165	1 7/8 48	4 3/4 121	21/32 17	13/16 21	21/32 17	3 5/16 84	1 7/8 48	1 1/2 38	1/2 M14	UKP206	P206	UK206	
	1	1 7/8 47.6	6 7/8 175	2 1/4 57	5 127	21/32 17	31/32 25	21/32 17	3 21/32 93	2 5/32 55	1 1/2 38	1/2 M14	UKPX06	PX06	UKX06	
	1	1 31/32 50	7 3/32 180	1 31/32 50	5 1/2 140	21/32 17	25/32 20	21/32 17	3 3/4 95	2 3/32 53	1 1/2 38	1/2 M14	UKP306	P306	UK306	
30	1 1/8	1 7/8 47.6	6 9/16 167	1 7/8 48	5 127	21/32 17	13/16 21	23/32 18	3 3/4 95	1 27/32 47	1 11/16 43	1/2 M14	UKP207	P207	UK207	
	1 1/8	2 1/8 54	8 203	2 1/4 57	5 21/32 144	21/32 17	1 3/16 30	3/4 19	4 1/8 105	2 17/32 64	1 11/16 43	1/2 M14	UKPX07	PX07	UKX07	
	1 1/8	2 13/64 56	8 9/32 210	2 7/32 56	6 5/16 160	21/32 17	31/32 25	3/4 19	4 7/32 107	2 9/16 65	1 11/16 43	1/2 M14	UKP307	P307	UK307	
35	1 1/4	1 15/16 49.2	7 1/4 184	2 1/8 54	5 13/32 137	21/32 17	13/16 21	23/32 18	3 27/32 98	2 3/32 53	1 13/16 46	1/2 M14	UKP208	P208	UK208	
	1 3/8	2 5/16 58.7	8 3/4 222	2 5/8 67	6 5/32 156	25/32 20	1 1/4 32	13/16 21	4 1/2 114	2 25/32 71	1 13/16 46	5/8 M16	UKPX08	PX08	UKX08	
	1 1/4	2 23/64 60	8 21/32 220	2 3/8 60	6 11/16 170	21/32 17	1 1/16 27	3/4 19	4 21/32 118	2 9/16 65	1 13/16 46	1/2 M14	UKP308	P308	UK308	
40	1 1/2	2 1/8 54	7 15/32 190	2 1/8 54	5 3/4 146	21/32 17	13/16 21	25/32 20	4 3/16 106	2 5/32 55	1 31/32 50	1/2 M14	UKP209	P209	UK209	
	1 1/2	2 5/16 58.7	8 3/4 222	2 5/8 67	6 5/32 156	25/32 20	1 5/16 33	13/16 21	4 9/16 116	2 25/32 71	1 31/32 50	5/8 M16	UKPX09	PX09	UKX09	
	1 1/2	2 41/64 67	9 21/32 245	2 5/8 67	7 15/32 190	25/32 20	1 3/16 30	13/16 21	5 3/16 132	2 15/16 75	1 31/32 50	5/8 M16	UKP309	P309	UK309	
45	1 3/4	2 1/4 57.2	8 1/8 206	2 3/8 60	6 1/4 159	25/32 20	7/8 22	13/16 21	4 7/16 113	2 3/8 60	2 5/32 55	5/8 M16	UKP210	P210	UK210	
	1 3/4	2 1/2 63.5	9 1/2 241	2 7/8 73	6 23/32 171	25/32 20	1 13/32 36	7/8 22	4 31/32 126	3 76	2 5/32 55	5/8 M16	UKPX10	PX10	UKX10	
	1 3/4	2 61/64 75	10 13/16 275	2 15/16 75	8 11/32 212	25/32 20	1 3/8 35	15/16 24	5 13/16 148	3 15/32 88	2 5/32 55	5/8 M16	UKP310	P310	UK310	
50	1 7/8	2 1/2 63.5	8 5/8 219	2 3/8 60	6 23/32 171	25/32 20	7/8 22	29/32 23	4 29/32 125	2 9/16 65	2 5/16 59	5/8 M16	UKP211	P211	UK211	
	2	2 3/4 69.8	10 1/4 260	3 1/8 79	7 1/4 184	31/32 25	1 13/32 36	1 3/32 28	5 15/32 139	3 9/32 83	2 5/16 59	3/4 M20	UKPX11	PX11	UKX11	
	2															

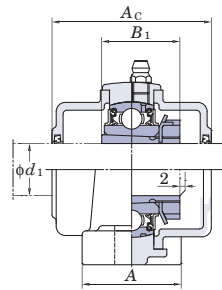
Remarks 1. In Part No. of unit and units with covers, fitting codes follow bore diameter numbers. (See Table 10.5 in P.62.)
 2. Part No. of applicable grease fittings are shown below.
 A-1/4-28UNF 205~210, X05~X09, 305~308
 A-R1/8..... 211~218, X10~X20, 309~328



With Pressed Steel Cover



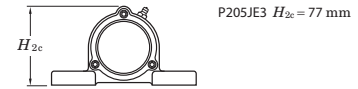
With Cast Iron Cover



Variations of tolerance of distance from mounting bottom to center of spherical bore (ΔH_{16})

Housing No.			Unit: mm
			ΔH_{16}
P205~P210	PX05~PX10	P305~P310	± 0.15
P211~P218	PX11~PX18	P311~P318	± 0.2
	PX20	P319~P328	± 0.3

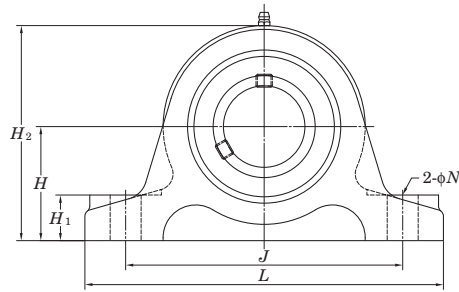
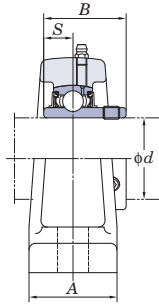
Forms and dimensions of H_{2c} of P205JE3 (housing with cast iron cover) are shown below.



Adapter No.	Mass kg	Basic Load Ratings kN		Factor f_0	With Pressed Steel Cover			With Cast Iron Cover						
		C_r	C_{0r}		Unit No.		Dimension mm A_s	Mass kg	Unit No.		Dimension mm A_c	Mass kg		
					Open Type	One Side Closed Type			Open Type	One Side Closed Type				
HE2305X	0.84	14.0	7.85	13.9	-	-	-	-	-	-	-	-		
H2305X	0.84				UKP205C	UKP205CD	49	1 ¹⁵ / ₁₆	0.84	UKP205FC	UKP205FCD	66	2 ¹⁹ / ₃₂	1.3
HE2305X	1.5	19.5	11.3	13.9	-	-	-	-	-	-	-	-		
H2305X	1.5				UKPX05C	UKPX05CD	53	2 ³ / ₃₂	1.5	-	-	-	-	-
HE2305X	1.7	21.2	10.9	12.6	-	-	-	-	-	-	-	-		
H2305X	1.7				-	-	-	-	-	UKP305C	UKP305CD	76	3	2.3
H2306X	1.4	19.5	11.3	13.9	UKP206C	UKP206CD	53	2 ³ / ₃₂	1.4	UKP206FC	UKP206FCD	70	2 ³ / ₄	1.9
HE2306X	1.4				-	-	-	-	-	-	-	-	-	-
H2306X	2.1	25.7	15.4	13.9	UKPX06C	UKPX06CD	60	2 ³ / ₈	2.1	-	-	-	-	-
HE2306X	2.1				-	-	-	-	-	-	-	-	-	-
H2306X	2.3	26.7	15.0	13.3	-	-	-	-	-	UKP306C	UKP306CD	82	3 ⁷ / ₃₂	2.9
HE2306X	2.3				-	-	-	-	-	-	-	-	-	-
HS2307X	1.7	25.7	15.4	13.9	-	-	-	-	-	-	-	-	-	-
H2307X	1.7				UKP207C	UKP207CD	60	2 ³ / ₈	1.7	UKP207FC	UKP207FCD	78	3 ¹ / ₁₆	2.5
HS2307X	2.7	29.1	17.8	14.0	-	-	-	-	-	-	-	-	-	-
H2307X	2.7				UKPX07C	UKPX07CD	69	2 ²³ / ₃₂	2.7	-	-	-	-	-
HS2307X	3.0	33.4	19.3	13.2	-	-	-	-	-	-	-	-	-	-
H2307X	3.0				-	-	-	-	-	UKP307C	UKP307CD	88	3 ¹⁵ / ₃₂	3.9
HE2308X	2.0	29.1	17.8	14.0	-	-	-	-	-	-	-	-	-	-
HS2308X	2.0				-	-	-	-	-	-	-	-	-	-
H2308X	2.0	UKP208C	UKP208CD	69	2 ²³ / ₃₂	2.0	UKP208FC	UKP208FCD	86	3 ³ / ₈	2.9			
HE2308X	3.5	34.1	21.3	14.0	-	-	-	-	-	-	-	-	-	-
HS2308X	3.5				-	-	-	-	-	-	-	-	-	-
H2308X	3.5	UKPX08C	UKPX08CD	69	2 ²³ / ₃₂	3.5	-	-	-	-	-	-	-	-
HE2308X	3.8	40.7	24.0	13.2	-	-	-	-	-	-	-	-	-	-
HS2308X	3.8				-	-	-	-	-	-	-	-	-	-
H2308X	3.8	-	-	-	-	-	UKP308C	UKP308CD	96	3 ²⁵ / ₃₂	5.2			
HE2309X	2.3	34.1	21.3	14.0	-	-	-	-	-	-	-	-	-	-
H2309X	2.3				UKP209C	UKP209CD	69	2 ²³ / ₃₂	2.3	UKP209FC	UKP209FCD	88	3 ¹⁵ / ₃₂	3.2
HE2309X	3.7	35.1	23.3	14.4	-	-	-	-	-	-	-	-	-	-
H2309X	3.7				UKPX09C	UKPX09CD	74	2 ²⁹ / ₃₂	3.7	-	-	-	-	-
HE2309X	5.0	48.9	29.5	13.3	-	-	-	-	-	-	-	-	-	-
H2309X	5.0				-	-	-	-	-	UKP309C	UKP309CD	102	4 ¹ / ₃₂	6.3
HE2310X	3.0	35.1	23.3	14.4	-	-	-	-	-	-	-	-	-	-
H2310X	3.0				UKP210C	UKP210CD	74	2 ²⁹ / ₃₂	3.0	UKP210FC	UKP210FCD	97	3 ¹³ / ₁₆	4.1
HE2310X	4.6	43.4	29.4	14.4	-	-	-	-	-	-	-	-	-	-
H2310X	4.6				UKPX10C	UKPX10CD	76	3	4.6	-	-	-	-	-
HE2310X	6.7	62.0	38.3	13.2	-	-	-	-	-	-	-	-	-	-
H2310X	6.7				-	-	-	-	-	UKP310C	UKP310CD	110	4 ¹¹ / ₃₂	8.4
HS2311X	3.7	43.4	29.4	14.4	-	-	-	-	-	-	-	-	-	-
H2311X	3.7				UKP211C	UKP211CD	76	3	3.7	UKP211FC	UKP211FCD	99	3 ²⁹ / ₃₂	5.0
HE2311X	3.7	-	-	-	-	-	-	-	-	-	-	-	-	-
HS2311X	6.2	52.4	36.2	14.4	-	-	-	-	-	-	-	-	-	-
H2311X	6.2				UKPX11C	UKPX11CD	89	3 ¹ / ₂	6.2	-	-	-	-	-
HE2311X	6.2	-	-	-	-	-	-	-	-	-	-	-	-	-

- In Part No. of unit with adapters and bearing with adapters, Part No. of applicable adapter follow the Part No. shown in the dimensional tables. (Example of Part No. : UKP206J + H2306X, UK206 + H2306X)
- As for the triple seal type product (205 is the double seal type product), suffix code L3 (or L2) follows the Part No. of unit or bearing.
- For the dimensions and forms of applicable bearings and adapters, see the dimensional tables of ball bearing for unit and adapter.
- Representative examples of the forms of housing are indicated.
- Housings of nodular graphite cast iron are also available.

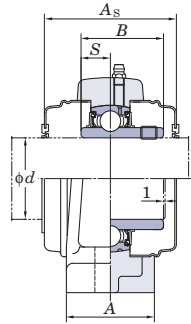
UCIP
Cylindrical bore (with set screws)
d 40 ~ 140 mm



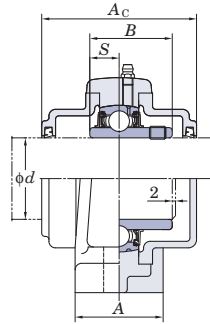
Shaft Dia. mm inch	Dimensions										Bolt Size inch mm	Standard											
	inch mm											Unit No.	Housing No.	Bearing No.									
d	H	L	A	J	N	H ₁	H ₂	B	S														
40	1 1/2	2 23/64	7 7/8	2 3/8	5 29/32	3/4	31/32	4 17/32	1.937	0.748	5/8 M16	UCIP208-24 UCIP208-25 UCIP208	IP208	UC208-24 UC208-25 UC208									
	1 9/16	60	200	60	150	19	25	115	49.2	19													
45	1 5/8	2 3/4	8 9/32	2 3/8	6 19/64	3/4	31/32	5 1/32	1.937	0.748	5/8 M16				UCIP209-26 UCIP209-27 UCIP209-28 UCIP209	IP209	UC209-26 UC209-27 UC209-28 UC209						
	1 11/16											70	210	60				160	19	25	128	49.2	19
	1 3/4																						
50	1 7/8	2 3/4	8 21/32	2 3/8	6 11/16	3/4	1 3/32	5 3/16	2.031	0.748	5/8 M16	UCIP210-30 UCIP210-31 UCIP210 UCIP210-32	IP210	UC210-30 UC210-31 UC210 UC210-32									
	1 15/16														70	220	60	170	19	28	132	51.6	19
	2																						
55	2	3 5/32	9 1/16	2 3/8	7 3/32	3/4	1 3/32	5 13/16	2.189	0.874	5/8 M16	UCIP211-32 UCIP211-34 UCIP211 UCIP211-35	IP211	UC211-32 UC211-34 UC211 UC211-35									
	2 1/8														80	230	60	180	19	28	148	55.6	22.2
	2 3/16																						
60	2 1/4	3 5/32	10 1/4	2 3/4	7 7/8	7/8	1 3/16	6 3/32	2.563	1.000	3/4 M20	UCIP212-36 UCIP212 UCIP212-38 UCIP212-39	IP212	UC212-36 UC212 UC212-38 UC212-39									
	2 3/8														80	260	70	200	22	30	155	65.1	25.4
	2 7/16																						
65	2 1/2	3 35/64	11 1/32	2 3/4	8 21/32	7/8	1 3/16	6 25/32	2.563	1.000	3/4 M20	UCIP213-40 UCIP213 UCIP213-40	IP213	UC213-40 UC213 UC213-40									
	2 1/2														90	280	70	220	22	30	172	65.1	25.4
	2 1/2														4 21/64	12 7/32	2 3/4	9 27/32	7/8	1 3/16	8 3/16	2.953	1.181
70	2 3/4	4 21/64	13	2 15/16	10 5/8	31/32	1 3/8	8 15/32	3.071	1.299	7/8 M22	UCIP314-44 UCIP314	IP314	UC314-44 UC314									
	2 3/4														110	330	75	270	25	35	215	78	33
75	2 15/16	4 23/32	13 3/8	2 15/16	11 1/32	31/32	1 3/8	9 1/16	3.228	1.260	7/8 M22	UCIP315-47 UCIP315 UCIP315-48	IP315	UC315-47 UC315 UC315-48									
	3														120	340	75	280	25	35	230	82	32
80	—	4 23/32	13 25/32	3 11/32	11 27/64	31/32	1 9/16	9 1/4	3.386	1.339	7/8 M22	UCIP316	IP316	UC316									
85	—	5 1/8	14 9/16	3 11/32	12 13/64	31/32	1 9/16	10 1/32	3.780	1.575	7/8 M22	UCIP317	IP317	UC317									
	—														130	370	85	310	25	40	255	96	40
90	3 1/2	5 1/8	15 3/4	3 11/32	13	1 5/32	1 25/32	10 1/4	3.780	1.575	1 M27	UCIP318-56 UCIP318	IP318	UC318-56 UC318									
	—														130	400	85	330	29	45	260	96	40
95	—	5 29/32	16 5/32	3 11/32	13 25/64	1 5/32	1 25/32	11 7/32	4.055	1.614	1 M27	UCIP319	IP319	UC319									
100	3 15/16	5 29/32	16 15/16	3 11/32	14 11/64	1 5/32	1 25/32	11 5/8	4.252	1.654	1 M27	UCIP320 UCIP320-63 UCIP320-64	IP320	UC320 UC320-63 UC320-64									
	4														150	430	85	360	29	45	295	108	42
110	—	6 11/16	19 9/32	3 15/16	16 9/64	1 1/4	1 31/32	13 3/16	4.606	1.811	1 1/8 M30	UCIP322	IP322	UC322									
120	—	6 11/16	20 3/32	3 15/16	16 59/64	1 1/4	1 31/32	13 19/32	4.961	2.008	1 1/8 M30	UCIP324	IP324	UC324									
	—														170	510	100	430	32	50	345	126	51
130	—	7 7/8	21 21/32	4 11/32	18 1/2	1 1/4	1 31/32	15 11/32	5.315	2.126	1 1/8 M30	UCIP326	IP326	UC326									
	—														200	550	110	470	32	50	390	135	54
140	—	7 7/8	23 7/32	4 11/32	19 11/16	1 3/8	2 5/32	15 3/4	5.709	2.323	1 1/4 M33	UCIP328	IP328	UC328									

Remarks 1. In Part No. of unit and units with covers, fitting codes follow bore diameter numbers. (See Table 10.5 in P.62.)
 2. Part No. of applicable grease fittings are shown below.
 A-1/4-28UNF 208~210
 A-R1/8 211~213, 313~328

With Pressed Steel Cover



With Cast Iron Cover



Variations of tolerance of distance from mounting bottom to center of spherical bore (ΔH_s), variations of tolerance of distance between centers of bolt holes (ΔJ_s) and variations of tolerance of bolt hole diameter (ΔN_s)

Unit: mm			
Housing No.	ΔH_s	ΔJ_s	ΔN_s
IP208~IP210	± 0.15	± 0.5	± 0.2
IP211~IP213	± 0.2	± 0.7	± 0.2
IP319~IP328	± 0.3		± 0.3

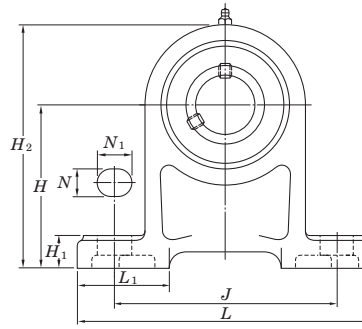
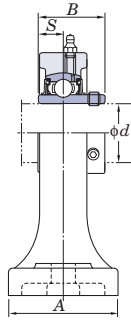
Mass kg	Basic Load Ratings kN C_r C_{0r}		Factor f_0	With Pressed Steel Cover			Mass kg	With Cast Iron Cover			Mass kg
				Unit No.		Dimension mm inch A_s		Unit No.		Dimension mm inch A_c	
				Open Type	One Side Closed Type			Open Type	One Side Closed Type		
3.4				-	-	-	-	-	-	-	
3.4	29.1	17.8	14.0	-	-	-	-	-	-	-	
3.4				UCIP208C	UCIP208CD	69 2 ²³ / ₃₂	3.4	UCIP208FC	UCIP208FCD	86 3 ³ / ₈	4.2
3.9				-	-	-	-	-	-	-	
3.9	34.1	21.3	14.0	-	-	-	-	-	-	-	
3.9				-	-	-	-	-	-	-	
3.9				UCIP209C	UCIP209CD	69 2 ²³ / ₃₂	3.9	UCIP209FC	UCIP209FCD	88 3 ¹⁵ / ₃₂	4.7
4.8				-	-	-	-	-	-	-	
4.8	35.1	23.3	14.4	-	-	-	-	-	-	-	
4.8				UCIP210C	UCIP210CD	74 2 ²⁹ / ₃₂	4.8	UCIP210FC	UCIP210FCD	97 3 ¹³ / ₁₆	5.8
4.8				-	-	-	-	-	-	-	
5.3				-	-	-	-	-	-	-	
5.3	43.4	29.4	14.4	-	-	-	-	-	-	-	
5.3				UCIP211C	UCIP211CD	76 3	5.3	UCIP211FC	UCIP211FCD	99 3 ²⁹ / ₃₂	6.3
5.3				-	-	-	-	-	-	-	
7.2				-	-	-	-	-	-	-	
7.2	52.4	36.2	14.4	UCIP212C	UCIP212CD	89 3 ¹ / ₂	7.2	UCIP212FC	UCIP212FCD	114 4 ¹ / ₂	8.7
7.2				-	-	-	-	-	-	-	
7.2				-	-	-	-	-	-	-	
8.8				-	-	-	-	-	-	-	
8.8	57.2	40.1	14.4	UCIP213C	UCIP213CD	89 3 ¹ / ₂	8.8	UCIP213FC	UCIP213FCD	114 4 ¹ / ₂	10.5
13.4				-	-	-	-	-	-	-	
13.4	92.7	59.9	13.2	-	-	-	-	UCIP313C	UCIP313CD	122 4 ¹³ / ₁₆	15.5
15.3				-	-	-	-	-	-	-	
15.3	104	68.2	13.2	-	-	-	-	UCIP314C	UCIP314CD	124 4 ⁷ / ₈	17.6
17.6				-	-	-	-	-	-	-	
17.6	113	77.2	13.2	-	-	-	-	UCIP315C	UCIP315CD	134 5 ⁹ / ₃₂	20.1
17.6				-	-	-	-	-	-	-	
20.3	123	86.7	13.3	-	-	-	-	UCIP316C	UCIP316CD	138 5 ⁷ / ₁₆	23.2
25.9	133	96.8	13.3	-	-	-	-	UCIP317C	UCIP317CD	146 5 ³ / ₄	29.2
28.6				-	-	-	-	-	-	-	
28.6	143	107	13.3	-	-	-	-	UCIP318C	UCIP318CD	150 5 ²⁹ / ₃₂	32.4
31.7	153	119	13.3	-	-	-	-	UCIP319C	UCIP319CD	162 6 ³ / ₈	36.0
36.9				-	-	-	-	UCIP320C	UCIP320CD	174 6 ²⁷ / ₃₂	42.5
36.9	173	141	13.2	-	-	-	-	-	-	-	
36.9				-	-	-	-	-	-	-	
52.4	205	180	13.2	-	-	-	-	UCIP322C	UCIP322CD	188 7 ¹³ / ₃₂	59.2
58.7	207	185	13.5	-	-	-	-	UCIP324C	UCIP324CD	196 7 ²³ / ₃₂	68.2
76.2	229	214	13.6	-	-	-	-	UCIP326C	UCIP326CD	214 8 ⁷ / ₁₆	88.3
87.0	253	246	13.6	-	-	-	-	UCIP328C	UCIP328CD	222 8 ³ / ₄	102

- As for the triple seal type product, suffix code L3 follows the Part No. of unit or bearing. (Example of Part No. : UCIP208JL3, UC208L3)
- As for the dimensions and forms of applicable bearings, see the dimensional tables of ball bearing for unit.
- Housings of nodular graphite cast iron are also available.

UCPH

Cylindrical bore (with set screws)

d 12 ~ 50 mm



Shaft Dia.		Dimensions											Bolt Size	Unit No.	Housing No.	Bearing No.	
mm	inch	inch															
d		H	L	A	J	N	N_1	H_1	H_2	L_1	B	S	inch				
		mm											mm				
12	1/2												M10	UCPH201	PH204	UC201	
15	5/8	2 3/4	5	1 9/16	3 3/4	1/2	3/4	19/32	3 31/32	1 13/16	1.220	0.500		UCPH201-8			UC201-8
17	3/4	70	127	40	95	13	19	15	101	46	31	12.7		UCPH202			UC202
														UCPH202-10			UC202-10
20														UCPH203			UC203
													UCPH204-12	UC204-12			
													UCPH204	UC204			
25	7/8												M10	UCPH205-14	PH205	UC205-14	
	15/16	3 5/32	5 1/2	1 31/32	4 1/8	1/2	3/4	5/8	4 1/2	1 15/16	1.343	0.563		UCPH205-15			UC205-15
	1	80	140	50	105	13	19	16	114	49	34.1	14.3		UCPH205			UC205
													UCPH205-16	UC205-16			
30	1 1/8												M14	UCPH206-18	PH206	UC206-18	
	1 3/16	3 35/64	6 1/2	1 31/32	4 3/4	21/32	13/16	23/32	5 1/8	2 7/32	1.500	0.626		UCPH206			UC206
	1 1/4	90	165	50	121	17	21	18	130	56	38.1	15.9		UCPH206-19			UC206-19
														UCPH206-20			UC206-20
35	1 1/4												M14	UCPH207-20	PH207	UC207-20	
	1 5/16	3 47/64	6 9/16	2 3/8	5	21/32	13/16	23/32	5 1/2	2 1/8	1.689	0.689		UCPH207-21			UC207-21
	1 3/8	95	167	60	127	17	21	18	140	54	42.9	17.5		UCPH207-22			UC207-22
	1 7/16													UCPH207			UC207
													UCPH207-23	UC207-23			
40	1 1/2												M14	UCPH208-24	PH208	UC208-24	
	1 9/16	3 15/16	7 1/4	2 3/4	5 13/32	21/32	13/16	25/32	5 29/32	2 1/4	1.937	0.748		UCPH208-25			UC208-25
		100	184	70	137	17	21	20	150	57	49.2	19		UCPH208			UC208
45	1 5/8												M14	UCPH209-26	PH209	UC209-26	
	1 11/16	4 9/64	7 15/32	2 3/4	5 3/4	21/32	13/16	25/32	6 7/32	2 9/32	1.937	0.748		UCPH209-27			UC209-27
	1 3/4	105	190	70	146	17	21	20	158	58	49.2	19		UCPH209-28			UC209-28
													UCPH209	UC209			
50	1 7/8												M16	UCPH210-30	PH210	UC210-30	
	1 15/16	4 21/64	8 1/8	2 3/4	6 1/4	25/32	7/8	7/8	6 1/2	2 9/16	2.031	0.748		UCPH210-31			UC210-31
	2	110	206	70	159	20	22	22	165	65	51.6	19		UCPH210			UC210
													UCPH210-32	UC210-32			

- Remarks
1. In Part No. of unit, fitting codes follow bore diameter codes. (See Table 10.5 in P.62.)
 2. Part No. of the applicable grease fitting is A-1/4-28UNF.
 3. As for the triple seal type product (from 201 to 205 are the double seal type products), suffix code L3 (or L2) follows Part No. of unit or bearing. (Example of Part No. : UCPH206JL3, UC206L3)

Variations of tolerance of distance from mounting bottom to center of spherical bore (ΔH_s)

Unit: mm

Housing No.	ΔH_s
PH204~PH210	± 0.15

	Basic Load Ratings kN		Factor	Mass
	C_r	C_{0r}	f_0	kg
	12.8	6.65	13.2	0.96
				0.94
				0.93
				0.91
	14.0	7.85	13.9	1.2
	19.5	11.3	13.9	1.6
	25.7	15.4	13.9	2.0
	29.1	17.8	14.0	2.7
	34.1	21.3	14.0	3.0
	35.1	23.3	14.4	3.5

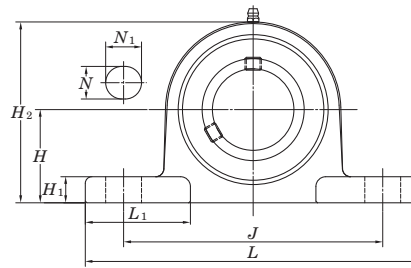
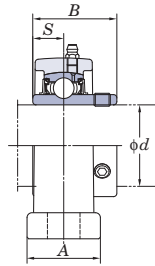
4. As for the dimensions and forms of applicable bearings, see the dimensional tables of ball bearing for unit.

5. Tapered bore (with adapter) type products are also available. (Example of Part No. : UKPH205J + H2305X, UK205 + H2305X)

UCSP-H1S6

Cylindrical bore (with set screws)

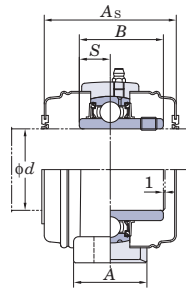
d 12 ~ 60 mm



Shaft Dia.		Dimensions											Bolt Size	Standard		
mm	inch	inch mm												inch mm	Housing No.	Bearing No.
d		H	L	A	J	N	N ₁	H ₁	H ₂	L ₁	B	S	Unit No.			
12	1/2	1 3/16	5	1 3/16	3 3/4	1/2	23/32	7/16	2 7/32	1 21/32	1.079	0.453	UCSP201XH1S6 UCSP201-8XH1S6 UCSP202XH1S6 UCSP202-10XH1S6 UCSP203XH1S6	SP203H1	UC201XS6 UC201-8XS6 UC202XS6 UC202-10XS6 UC203XS6	
		30.2	127	30	95	13	18	11	56	42	27.4	11.5				M10
15	5/8	1 5/16	5	1 3/16	3 3/4	1/2	23/32	7/16	2 15/32	1 21/32	1.220	0.500	UCSP204-12H1S6 UCSP204H1S6	SP204H1	UC204-12S6 UC204S6	
		33.3	127	30	95	13	18	11	63	42	31	12.7				M10
17	3/4	1 7/16	5 1/2	1 3/16	4 1/8	1/2	3/4	15/32	2 23/32	1 13/16	1.343	0.563	UCSP205-14H1S6 UCSP205-15H1S6 UCSP205H1S6 UCSP205-16H1S6	SP205H1	UC205-14S6 UC205-15S6 UC205S6 UC205-16S6	
		36.5	140	30	105	13	19	12	69	46	34.1	14.3				M10
20	7/8	1 11/16	6 1/2	1 13/32	4 3/4	21/32	13/16	1/2	3 3/16	2 1/8	1.500	0.626	UCSP206-18H1S6 UCSP206H1S6 UCSP206-19H1S6 UCSP206-20H1S6	SP206H1	UC206-18S6 UC206S6 UC206-19S6 UC206-20S6	
		42.9	165	36	121	17	21	13	81	54	38.1	15.9				M14
25	1 1/8	1 1/4	6 9/16	1 1/2	5	21/32	13/16	9/16	3 19/32	2	1.689	0.689	UCSP207-20H1S6 UCSP207-21H1S6 UCSP207-22H1S6 UCSP207H1S6 UCSP207-23H1S6	SP207H1	UC207-20S6 UC207-21S6 UC207-22S6 UC207S6 UC207-23S6	
		47.6	167	38	127	17	21	14	91	51	42.9	17.5				M14
30	1 1/4	1 5/16	7 1/4	1 9/16	5 13/32	21/32	13/16	9/16	3 13/16	2 3/8	1.937	0.748	UCSP208-24H1S6 UCSP208-25H1S6 UCSP208H1S6	SP208H1	UC208-24S6 UC208-25S6 UC208S6	
		49.2	184	40	137	17	21	14	97	60	49.2	19				M14
35	1 5/8	2 1/8	7 15/32	1 9/16	5 3/4	21/32	13/16	19/32	4 3/32	2 13/32	1.937	0.748	UCSP209-26H1S6 UCSP209-27H1S6 UCSP209-28H1S6 UCSP209H1S6	SP209H1	UC209-26S6 UC209-27S6 UC209-28S6 UC209S6	
		54	190	40	146	17	21	15	104	61	49.2	19				M14
40	1 7/8	2 1/4	8 1/8	1 25/32	6 1/4	25/32	7/8	5/8	4 3/8	2 9/16	2.031	0.748	UCSP210-30H1S6 UCSP210-31H1S6 UCSP210H1S6 UCSP210-32H1S6	SP210H1	UC210-30S6 UC210-31S6 UC210S6 UC210-32S6	
		57.2	206	45	159	20	22	16	111	65	51.6	19				M16
45	1 15/16	2 1/2	8 5/8	1 7/8	6 23/32	25/32	7/8	5/8	4 29/32	2 3/4	2.189	0.874	UCSP211-32H1S6 UCSP211-34H1S6 UCSP211H1S6 UCSP211-35H1S6	SP211H1	UC211-32S6 UC211-34S6 UC211S6 UC211-35S6	
		63.5	219	48	171	20	22	16	125	70	55.6	22.2				M16
50	2	2 3/4	9 1/2	2 5/32	7 1/4	25/32	31/32	7/8	5 7/16	3	2.563	1.000	UCSP212-36H1S6 UCSP212H1S6 UCSP212-38H1S6 UCSP212-39H1S6	SP212H1	UC212-36S6 UC212S6 UC212-38S6 UC212-39S6	
		69.8	241	55	184	20	25	17	138	76	65.1	25.4				M16

- Remarks
1. In Part No. of unit and units with covers, fitting codes follow bore diameter codes. (See Table 10.5 in P.62.)
 2. Part No. of the applicable grease fitting is shown below.
 A-1/4-28UNFN12201X~210
 A-R1/8N12211~212
 3. For the dimensions and forms of applicable bearings, see the dimensional tables of ball bearing for unit.

With Pressed Stainless Steel Cover



Variations of tolerance of distance from mounting bottom to center of spherical bore (ΔH_s)

Unit: mm	
Housing No.	ΔH_s
SP203H1~SP210H1	± 0.15
SP211H1~SP212H1	± 0.2

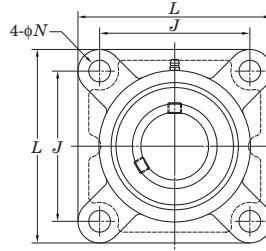
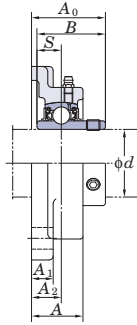
	Mass kg	Basic Load Ratings kN		Factor f_0	With Pressed Stainless Steel Cover Unit No.		Dimension		Mass kg
		C_r	C_{0r}		Open Type	One Side Closed Type	mm	inch	
	0.47	8.15	3.85	13.2	—	—	—	—	—
	0.6	10.9	5.35	13.2	UCSP204H1CS6	UCSP204H1CDS6	45	1 25/32	0.6
	0.7	11.9	6.3	13.9	UCSP205H1CS6	UCSP205H1CDS6	49	1 15/16	0.7
	1.1	16.5	9.05	13.9	UCSP206H1CS6	UCSP206H1CDS6	53	2 3/32	1.1
	1.4	21.8	12.3	13.9	UCSP207H1CS6	UCSP207H1CDS6	60	2 3/8	1.4
	1.7	24.8	14.3	14.0	UCSP208H1CS6	UCSP208H1CDS6	69	2 23/32	1.7
	2	27.8	16.2	14.0	UCSP209H1CS6	UCSP209H1CDS6	69	2 23/32	2.0
	2.5	29.8	18.6	14.4	UCSP210H1CS6	UCSP210H1CDS6	74	2 29/32	2.5
	3.4	36.8	23.5	14.4	UCSP211H1CS6	UCSP211H1CDS6	76	3	3.4
	4.5	44.5	29	14.4	UCSP212H1CS6	UCSP212H1CDS6	89	3 1/2	4.5

4-Bolt Flange Units

UCF

Cylindrical bore (with set screws)

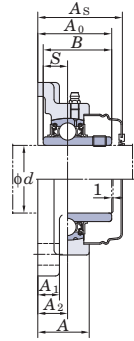
d 12 ~ (45) mm



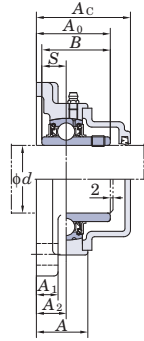
Shaft Dia. mm inch	Dimensions										Bolt Size inch mm	Standard		
	inch mm											Unit No.	Housing No.	Bearing No.
d	L	A	J	N	A_1	A_2	A_0	B	S					
12												UCF201		UC201
												UCF201-8		UC201-8
15												UCF202	F204	UC202
												UCF202-10		UC202-10
17												UCF203		UC203
												UCF204-12		UC204-12
20												UCF204		UC204
												UCF205-14		UC205-14
												UCF205-15	F205	UC205-15
												UCF205		UC205
												UCF205-16		UC205-16
25												UCFX05	FX05	UCX05
												UCFX05-16		UCX05-16
												UCF305	F305	UC305
												UCF305-16		UC305-16
												UCF206-18		UC206-18
												UCF206	F206	UC206
												UCF206-19		UC206-19
												UCF206-20		UC206-20
30												UCFX06	FX06	UCX06
												UCFX06-19		UCX06-19
												UCFX06-20		UCX06-20
												UCF306	F306	UC306
												UCF207-20		UC207-20
												UCF207-21	F207	UC207-21
												UCF207-22		UC207-22
												UCF207		UC207
												UCF207-23		UC207-23
35												UCFX07-22	FX07	UCX07-22
												UCFX07		UCX07
												UCFX07-23		UCX07-23
												UCF307	F307	UC307
												UCF208-24		UC208-24
												UCF208-25	F208	UC208-25
												UCF208		UC208
40												UCFX08-24	FX08	UCX08-24
												UCFX08		UCX08
												UCF308-24	F308	UC308-24
												UCF308		UC308
												UCF209-26		UC209-26
												UCF209-27	F209	UC209-27
												UCF209-28		UC209-28
												UCF209		UC209
45												UCFX09-27	FX09	UCX09-27
												UCFX09-28		UCX09-28
												UCFX09		UCX09

- Remarks 1. In Part No. of unit and units with covers, fitting codes follow bore diameter numbers. (See Table 10.5 in P.62.)
 2. Part No. of applicable grease fittings are shown below.
 A-1/4-28UNF 201~210, X05~X09, 305~308
 A-R1/8..... 211~218, X10~X20, 309~328

With Pressed Steel Cover



With Cast Iron Cover



Variations of tolerance of distance from mounting surface to center of spherical bore (ΔA_{2s}) and tolerance of position of bolt hole (X)

Housing No.			Unit: mm	
	ΔA_{2s}	X		
F204~F210	FX05~FX10	F305~F310	± 0.5	0.7
F211~F218	FX11~FX20	F311~F328	± 0.8	1

Variations of tolerance of bolt hole diameter (ΔD_{Ns})

Housing No.			Unit: mm	
	ΔD_{Ns}			
F204~F218	FX05~FX18	F305~F315	± 0.2	
	FX20	F316~F328	± 0.3	

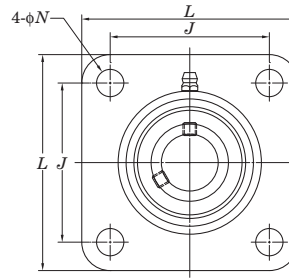
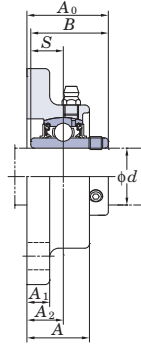
Mass kg	Basic Load Ratings kN		Factor f_0	With Pressed Steel Cover				With Cast Iron Cover					
	C_r	C_{0r}		Unit No.		Dimension		Mass kg	Unit No.		Dimension		Mass kg
				Open Type	Closed Type	mm	inch		Open Type	Closed Type	mm	inch	
0.64	12.8	6.65	13.2	UCF201C	UCF201D	37.5	1 15/32	0.64	—	—	—	—	—
0.64				—	—	—	—	—	—	—	—	—	—
0.62				UCF202C	UCF202D	37.5	1 15/32	0.62	—	—	—	—	—
0.62				—	—	—	—	—	—	—	—	—	—
0.61				UCF203C	UCF203D	37.5	1 15/32	0.61	—	—	—	—	—
0.61				—	—	—	—	—	—	—	—	—	—
0.59	UCF204C	UCF204D	37.5	1 15/32	0.59	UCF204FC	UCF204FD	46	1 13/16	0.74	—		
0.83	14.0	7.85	13.9	—	—	—	—	—	—	—	—	—	
0.83				—	—	—	—	—	—	—	—	—	
0.83				UCF205C	UCF205D	40.5	1 19/32	0.83	UCF205FC	UCF205FD	49	1 15/16	1.0
0.83				—	—	—	—	—	—	—	—	—	—
1.2	19.5	11.3	13.9	UCFX05C	UCFX05D	44.5	1 3/4	1.2	—	—	—	—	
1.2				—	—	—	—	—	—	—	—	—	
1.3	21.2	10.9	12.6	—	—	—	—	—	UCF305C	UCF305D	54	2 1/8	1.6
1.3				—	—	—	—	—	—	—	—	—	—
1.1	19.5	11.3	13.9	—	—	—	—	—	—	—	—	—	
1.1				UCF206C	UCF206D	44.5	1 3/4	1.1	UCF206FC	UCF206FD	53	2 3/32	1.4
1.1				—	—	—	—	—	—	—	—	—	—
1.1				—	—	—	—	—	—	—	—	—	—
1.6	25.7	15.4	13.9	UCFX06C	UCFX06D	49	1 15/16	1.6	—	—	—	—	
1.6				—	—	—	—	—	—	—	—	—	
1.6				—	—	—	—	—	—	—	—	—	
1.9	26.7	15.0	13.3	—	—	—	—	—	UCF306C	UCF306D	59	2 5/16	2.2
1.5	25.7	15.4	13.9	—	—	—	—	—	—	—	—	—	
1.5				—	—	—	—	—	—	—	—	—	
1.5				UCF207C	UCF207D	49	1 15/16	1.5	UCF207FC	UCF207FD	58	2 9/32	1.9
1.5				—	—	—	—	—	—	—	—	—	—
2.0	29.1	17.8	14.0	UCFX07C	UCFX07D	55.5	2 3/16	2.0	—	—	—	—	
2.0				—	—	—	—	—	—	—	—	—	
2.0				—	—	—	—	—	—	—	—	—	—
2.3	33.4	19.3	13.2	—	—	—	—	—	UCF307C	UCF307D	64	2 17/32	2.7
1.9	29.1	17.8	14.0	—	—	—	—	—	—	—	—	—	
1.9				—	—	—	—	—	—	—	—	—	
1.9				UCF208C	UCF208D	55.5	2 3/16	1.9	UCF208FC	UCF208FD	64	2 17/32	2.3
2.4	34.1	21.3	14.0	—	—	—	—	—	—	—	—	—	
2.4				UCFX08C	UCFX08D	56.5	2 7/32	2.4	—	—	—	—	
3.1	40.7	24.0	13.2	—	—	—	—	—	UCF308C	UCF308D	71	2 25/32	3.6
3.1				—	—	—	—	—	—	—	—	—	—
2.2	34.1	21.3	14.0	—	—	—	—	—	—	—	—	—	
2.2				—	—	—	—	—	—	—	—	—	
2.2				—	—	—	—	—	—	—	—	—	
2.2				UCF209C	UCF209D	56.5	2 7/32	2.2	UCF209FC	UCF209FD	66	2 19/32	2.6
2.2				—	—	—	—	—	—	—	—	—	—
2.7	35.1	23.3	14.4	—	—	—	—	—	—	—	—	—	
2.7				UCFX09C	UCFX09D	60	2 3/8	2.7	—	—	—	—	

- As for the triple seal type product (from 201 to 205 are the double seal type products), suffix code L3 (L2) follows the Part No. of unit or bearing. (Example of Part No. : UCF206L3, UC206L3)
- For the dimensions and forms of applicable bearings, see the dimensional tables of ball bearing for unit.
- Housings of nodular graphite cast iron are also available.

UCSF-H1S6

Cylindrical bore (with set screws)

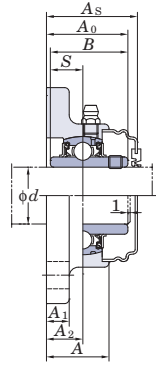
d 20 ~ 60 mm



Shaft Dia.		Dimensions									Bolt Size	Standard												
mm	inch	inch mm										Unit No.	Housing No.	Bearing No.										
d		L	A	J	N	A_1	A_2	A_0	B	S	inch mm													
20	3/4	3 3/8	1 1/32	2 33/64	15/32	13/32	19/32	1 5/16	1.220	0.500	3/8	UCSF204-12H1S6 UCSF204H1S6	SF204H1	UC204-12S6 UC204S6										
		86	26	64	12	10	15	33.3	31	12.7	M10													
25	7/8	3 3/4	1 3/32	2 3/4	15/32	13/32	5/8	1 13/32	1.343	0.563	3/8	UCSF205-14H1S6 UCSF205-15H1S6 UCSF205H1S6 UCSF205-16H1S6	SF205H1	UC205-14S6 UC205-15S6 UC205S6 UC205-16S6										
	15/16														95	27.5	70	12	10	16	35.8	34.1	14.3	M10
	1																							
30	1 1/8	4 1/4	1 7/32	3 17/64	15/32	13/32	45/64	1 19/32	1.500	0.626	3/8	UCSF206-18H1S6 UCSF206H1S6 UCSF206-19H1S6 UCSF206-20H1S6	SF206H1	UC206-18S6 UC206S6 UC206-19S6 UC206-20S6										
	1 3/16														108	31	83	12	10	18	40.2	38.1	15.9	M10
	1 1/4																							
35	1 1/4	4 19/32	1 11/32	3 5/8	35/64	7/16	3/4	1 3/4	1.689	0.689	7/16	UCSF207-20H1S6 UCSF207-21H1S6 UCSF207-22H1S6 UCSF207H1S6 UCSF207-23H1S6	SF207H1	UC207-20S6 UC207-21S6 UC207-22S6 UC207S6 UC207-23S6										
	1 5/16														117	34	92	14	11	19	44.4	42.9	17.5	M12
	1 3/8																							
	1 7/16																							
40	1 1/2	5 1/8	1 13/32	4 1/64	5/8	15/32	53/64	2 1/32	1.937	0.748	1/2	UCSF208-24H1S6 UCSF208-25H1S6 UCSF208H1S6	SF208H1	UC208-24S6 UC208-25S6 UC208S6										
	1 9/16														130	36	102	16	12	21	51.2	49.2	19	M14
45	1 5/8	5 13/32	1 1/2	4 9/64	5/8	1/2	55/64	2 1/16	1.937	0.748	1/2	UCSF209-26H1S6 UCSF209-27H1S6 UCSF209-28H1S6 UCSF209H1S6	SF209H1	UC209-26S6 UC209-27S6 UC209-28S6 UC209S6										
	1 11/16														137	38	105	16	13	22	52.2	49.2	19	M14
	1 3/4																							
50	1 7/8	5 5/8	1 9/16	4 3/8	5/8	1/2	55/64	2 5/32	2.031	0.748	1/2	UCSF210-30H1S6 UCSF210-31H1S6 UCSF210H1S6 UCSF210-32H1S6	SF210H1	UC210-30S6 UC210-31S6 UC210S6 UC210-32S6										
	1 15/16														143	40	111	16	13	22	54.6	51.6	19	M14
	2																							
55	2	6 3/8	1 11/16	5 1/8	3/4	19/32	63/64	2 5/16	2.189	0.874	5/8	UCSF211-32H1S6 UCSF211-34H1S6 UCSF211H1S6 UCSF211-35H1S6	SF211H1	UC211-32S6 UC211-34S6 UC211S6 UC211-35S6										
	2 1/8														162	43	130	19	15	25	58.4	55.6	22.2	M16
	2 3/16																							
60	2 1/4	6 7/8	1 7/8	5 5/8	3/4	19/32	1 9/64	2 23/32	2.563	1.000	5/8	UCSF212-36H1S6 UCSF212H1S6 UCSF212-38H1S6 UCSF212-39H1S6	SF212H1	UC212-36S6 UC212S6 UC212-38S6 UC212-39S6										
	2 3/8														175	48	143	19	15	29	68.7	65.1	25.4	M16
	2 7/16																							

- Remarks
1. In Part No. of unit and units with covers, fitting codes follow bore diameter codes. (See **Table 10.5** in P.62.)
 2. Part No. of the applicable grease fitting is shown below.
 A-1/4-28UNFN12204~210
 A-R1/8N12211~212
 3. For the dimensions and forms of applicable bearings, see the dimensional tables of ball bearing for unit.

With Pressed Stainless Steel Cover



Variations of tolerance of distance from mounting surface to center of spherical bore (ΔA_{2s}) and tolerance of position of bolt hole (X)

Unit: mm		
Housing No.	ΔA_{2s}	X
SF204H1~210H1	± 0.5	0.7
SF211H1~212H1	± 0.8	1

Variations of tolerance of bolt hole diameter (ΔN_s)

Unit: mm	
Housing No.	ΔN_s
SF204H1~212H1	± 0.2

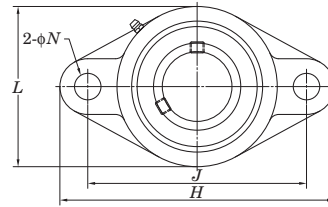
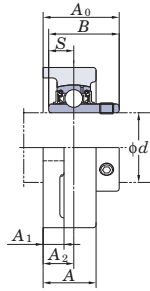
Mass	Basic Load Ratings kN		Factor	With Pressed Stainless Steel Cover				
				Unit No.		Dimension		Mass
				Open Type	Closed Type	mm	inch	
kg	C_r	C_{0r}	f_0			A_s	kg	
0.66	10.9	5.35	13.2	UCSF204H1CS6	UCSF204H1DS6	37.5	1 15/32	0.66
0.85	11.9	6.3	13.9	UCSF205H1CS6	UCSF205H1DS6	40.5	1 19/32	0.85
1.2	16.5	9.05	13.9	UCSF206H1CS6	UCSF206H1DS6	44.5	1 3/4	1.2
1.5	21.8	12.3	13.9	UCSF207H1CS6	UCSF207H1DS6	49	1 15/16	1.5
2	24.8	14.3	14.0	UCSF208H1CS6	UCSF208H1DS6	55.5	2 3/16	2.0
2.3	27.8	16.2	14.0	UCSF209H1CS6	UCSF209H1DS6	56.5	2 7/32	2.3
2.6	29.8	18.6	14.4	UCSF210H1CS6	UCSF210H1DS6	59	2 5/16	2.6
4	36.8	23.5	14.4	UCSF211H1CS6	UCSF211H1DS6	63	2 15/32	4.0
4.7	44.5	29	14.4	UCSF212H1CS6	UCSF212H1DS6	73.5	2 29/32	4.7

2-Bolt Flange Units

UCFL

Cylindrical bore (with set screws)

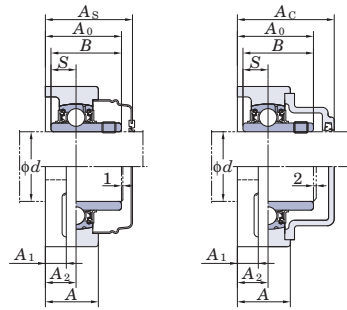
d 12 ~ (45) mm



Shaft Dia. mm inch	Dimensions											Bolt Size inch mm	Standard		
	d	H	L	A	J	N	A_1	A_2	A_0	B	S		Unit No.	Housing No.	Bearing No.
12 15 17 20	1/2												M10	FL204	UC201 UC201-8 UC202 UC202-10 UC203 UC204-12 UC204
	5/8	4 7/16	2 3/8	1	3 35/64	15/32	7/16	19/32	1 5/16	1.220	0.500				
	3/4	113	60	25.5	90	12	11	15	33.3	31	12.7				
25	7/8												M14	FL205	UC205-14 UC205-15 UC205 UC205-16
	15/16	5 1/8	2 11/16	1 1/16	3 57/64	5/8	1/2	5/8	1 13/32	1.343	0.563				
	1	130	68	27	99	16	13	16	35.8	34.1	14.3				
30	1 1/8												M14	FL206	UC206-18 UC206 UC206-19 UC206-20
	1 3/16	5 9/16	3 9/32	1 3/16	4 39/64	15/32	1/2	45/64	1 19/32	1.500	0.626				
	1 1/4	141	83	30	117	12	13	18	40.2	38.1	15.9				
35	1 3/16												M14	FLX06	UCX06 UCX06-19 UCX06-20
	1 1/4	6 5/32	3 3/4	1 11/32	5 1/8	5/8	9/16	3/4	1 3/4	1.689	0.689				
		156	95	34	130	16	14	19	44.4	42.9	17.5				
40	1 1/4												M20	FL306	UC306
	1 5/16	7 3/32	3 17/32	1 1/4	5 9/32	29/32	19/32	45/64	1 23/32	1.693	0.669				
	1 3/8	180	90	32	134	23	15	18	44	43	17				
45	1 1/4												M14	FL207	UC207-20 UC207-21 UC207-22 UC207
	1 5/16	6 11/32	3 17/32	1 11/32	5 1/8	5/8	9/16	3/4	1 3/4	1.689	0.689				
	1 3/8	161	90	34	130	16	14	19	44.4	42.9	17.5				
45	1 7/16												M14	FLX07	UCX07 UCX07-22 UCX07
	1 3/8	6 23/32	4 1/8	1 1/2	5 43/64	5/8	9/16	53/64	2 1/32	1.937	0.748				
	1 7/16	171	105	38	144	16	14	21	51.2	49.2	19				
45	1 7/16												M20	FL307	UC307
	1 3/8	7 9/32	3 15/16	1 13/32	5 35/64	29/32	5/8	25/32	1 15/16	1.890	0.748				
		185	100	36	141	23	16	20	49	48	19				
45	1 1/2												M14	FL208	UC208-24 UC208-25 UC208
	1 9/16	6 7/8	3 15/16	1 13/32	5 43/64	5/8	9/16	53/64	2 1/32	1.937	0.748				
		175	100	36	144	16	14	21	51.2	49.2	19				
45	1 1/2												M14	FLX08	UCX08-24 UCX08
	1 9/16	7 1/16	4 3/8	1 9/16	5 53/64	5/8	9/16	55/64	2 1/16	1.937	0.748				
		179	111	40	148	16	14	22	52.2	49.2	19				
45	1 1/2												M20	FL308	UC308-24 UC308
	1 9/16	7 7/8	4 13/32	1 9/16	6 7/32	29/32	21/32	29/32	2 7/32	2.047	0.748				
		200	112	40	158	23	17	23	56	52	19				
45	1 5/8												M16	FL209	UC209-26 UC209-27 UC209-28 UC209
	1 11/16	7 13/32	4 1/4	1 1/2	5 53/64	3/4	19/32	55/64	2 1/16	1.937	0.748				
	1 3/4	188	108	38	148	19	15	22	52.2	49.2	19				
45	1 11/16												M14	FLX09	UCX09-27 UCX09-28 UCX09
	1 3/4	7 7/16	4 9/16	1 9/16	6 3/16	5/8	9/16	29/32	2 3/16	2.031	0.748				

Remarks 1. In Part No. of unit and units with covers, fitting codes follow bore diameter numbers. (See Table 10.5 in P.62.)
 2. Part No. of applicable grease fittings are shown below.
 A-1/4-28UNF 201~210, X05~X09, 305~308
 A-R1/8..... 211~218, X10, 309~324

With Pressed Steel Cover With Cast Iron Cover



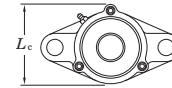
Variations of tolerance of distance from mounting surface to center of spherical bore (ΔA_{2s}) and tolerance of position of bolt hole (X)

Housing No.			Unit: mm	
Housing No.			ΔA_{2s}	X
FL204~FL210	FLX05~FLX10	FL305~FL310	± 0.5	0.7
FL211~FL218		FL311~FL324	± 0.8	1

Variations of tolerance of bolt hole diameter (ΔN_h)

Housing No.			Unit: mm	
Housing No.			ΔN_h	
FL204~FL218	FLX05~FLX10	FL305~FL311	± 0.2	
		FL312~FL324	± 0.3	

Forms and dimensions of L_c of FL204JE3 and FL205JE3 (housing with cast iron cover) are shown below.



FL204JE3 $L_c = 65$ mm
FL205JE3 $L_c = 73$ mm

Mass kg	Basic Load Ratings kN		Factor f_0	With Pressed Steel Cover			Mass kg	With Cast Iron Cover			Mass kg		
	C_r	C_{0r}		Unit No.		Dimension		Open Type	Closed Type	Dimension		Mass	
				Open Type	Closed Type	mm				inch			mm
0.50	12.8	6.65	13.2	UCFL201C	UCFL201D	37.5	1 15/32	0.50	—	—	—	—	
0.50				—	—	—	—	—	—	—	—	—	
0.48				UCFL202C	UCFL202D	37.5	1 15/32	0.48	—	—	—	—	—
0.48				—	—	—	—	—	—	—	—	—	—
0.47				UCFL203C	UCFL203D	37.5	1 15/32	0.47	—	—	—	—	—
0.47				—	—	—	—	—	—	—	—	—	—
0.45	UCFL204C	UCFL204D	37.5	1 15/32	0.45	UCFL204FC	UCFL204FD	46	1 13/16	0.6	0.6		
0.64	14.0	7.85	13.9	—	—	—	—	—	—	—	—	—	
0.64				—	—	—	—	—	—	—	—	—	
0.64				UCFL205C	UCFL205D	40.5	1 19/32	0.64	UCFL205FC	UCFL205FD	49	1 15/16	0.83
0.64				—	—	—	—	—	—	—	—	—	—
1.1	19.5	11.3	13.9	UCFLX05C	UCFLX05D	44.5	1 3/4	1.1	—	—	—	—	
1.1				—	—	—	—	—	—	—	—	—	
1.1	21.2	10.9	12.6	—	—	—	—	—	UCFL305C	UCFL305D	54	2 1/8	1.4
1.1				—	—	—	—	—	—	—	—	—	—
0.93	19.5	11.3	13.9	—	—	—	—	—	—	—	—	—	
0.93				UCFL206C	UCFL206D	44.5	1 3/4	0.93	UCFL206FC	UCFL206FD	53	2 3/32	1.2
0.93				—	—	—	—	—	—	—	—	—	—
0.93				—	—	—	—	—	—	—	—	—	—
1.5	25.7	15.4	13.9	UCFLX06C	UCFLX06D	49	1 15/16	1.5	—	—	—	—	
1.5				—	—	—	—	—	—	—	—	—	
1.5				—	—	—	—	—	—	—	—	—	
1.5	26.7	15.0	13.3	—	—	—	—	—	UCFL306C	UCFL306D	59	2 5/16	1.8
1.2	25.7	15.4	13.9	—	—	—	—	—	—	—	—	—	
1.2				—	—	—	—	—	—	—	—	—	
1.2				UCFL207C	UCFL207D	49	1 15/16	1.2	UCFL207FC	UCFL207FD	58	2 9/32	1.6
1.2				—	—	—	—	—	—	—	—	—	
1.9	29.1	17.8	14.0	—	—	—	—	—	—	—	—	—	
1.9				UCFLX07C	UCFLX07D	55.5	2 3/16	1.9	—	—	—	—	
1.9				—	—	—	—	—	—	—	—	—	
1.8	33.4	19.3	13.2	—	—	—	—	—	UCFL307C	UCFL307D	64	2 17/32	2.2
1.6	29.1	17.8	14.0	—	—	—	—	—	—	—	—	—	
1.6				UCFL208C	UCFL208D	55.5	2 3/16	1.6	UCFL208FC	UCFL208FD	64	2 17/32	2.0
2.1	34.1	21.3	14.0	—	—	—	—	—	—	—	—	—	
2.1				UCFLX08C	UCFLX08D	56.5	2 7/32	2.1	—	—	—	—	
2.5	40.7	24.0	13.2	—	—	—	—	—	UCFL308C	UCFL308D	71	2 25/32	3.0
2.5				—	—	—	—	—	—	—	—	—	
1.9	34.1	21.3	14.0	—	—	—	—	—	—	—	—	—	
1.9				—	—	—	—	—	—	—	—	—	
1.9				—	—	—	—	—	—	—	—	—	
1.9				UCFL209C	UCFL209D	56.5	2 7/32	1.9	UCFL209FC	UCFL209FD	66	2 19/32	2.3
1.9				—	—	—	—	—	—	—	—	—	
2.4	35.1	23.3	14.4	—	—	—	—	—	—	—	—	—	
2.4				—	—	—	—	—	—	—	—	—	
2.4				UCFLX09C	UCFLX09D	60	2 3/8	2.4	—	—	—	—	

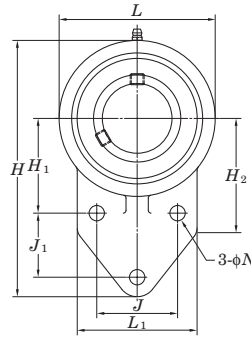
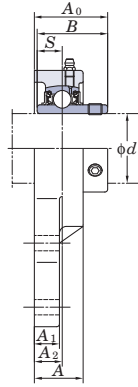
- As for the triple seal type product (from 201 to 205 are the double seal type products), suffix code L3 (or L2) follows the Part No. of unit or bearing. (Example of Part No. : UCFL206JL3, UC206L3)
- For the dimensions and forms of applicable bearings, see the dimensional tables of ball bearing for unit.
- Housings of nodular graphite cast iron are also available.

3-Bolt Flange Units

UCFB

Cylindrical bore (with set screws)

d 12 ~ 50 mm



Shaft Dia.		Dimensions															Bolt Size	Unit No.	Housing No.	
mm	inch	inch mm																		
d		H	L	A	J	J_1	N	H_1	H_2	L_1	A_1	A_2	A_0	B	S	inch mm				
12	1/2															5/16	UCFB201 UCFB201-8	FB204		
15	5/8	4 11/32	2 7/16	1 5/16	1 17/64	1 1/16	3/8	1 21/32	2 1/16	2 1/16	1/2	1 7/32	1 1/4	1.220	0.500	M8	UCFB202 UCFB202-10			
17	3/4	110	62	24.5	32	27	9.5	42	52	52	13	13.5	31.8	31	12.7		UCFB203 UCFB204-12			
20																	UCFB204			
25	7/8															5/16	UCFB205-14 UCFB205-15	FB205		
	1 5/16	4 9/16	2 11/16	1 1/16	1 11/32	1 1/16	3/8	1 49/64	2 1/16	2 7/32	1/2	1 19/32	1 3/8	1.343	0.563	M8	UCFB205			
	1	116	68	27	34	27	9.5	45	52	56	13	15	34.8	34.1	14.3		UCFB205-16			
30	1 1/8															5/16	UCFB206-18 UCFB206	FB206		
	1 3/16	5 1/8	3 1/16	1 3/16	1 37/64	1 9/64	3/8	1 31/32	2 5/32	2 9/16	1/2	4 3/64	1 17/32	1.500	0.626	M8	UCFB206-19			
	1 1/4	130	78	30	40	29	9.5	50	55	65	13	17	39.2	38.1	15.9		UCFB206-20			
35	1 1/4															5/16	UCFB207-20 UCFB207-21	FB207		
	1 5/16	5 21/32	3 17/32	1 5/16	1 13/16	1 17/64	3/8	2 11/64	2 7/16	2 3/4	19/32	3/4	1 3/4	1.689	0.689	M8	UCFB207-22			
	1 3/8	144	90	33.5	46	32	9.5	55	62	70	15	19	44.4	42.9	17.5		UCFB207			
	1 7/16																UCFB207-23			
40	1 1/2															3/8	UCFB208-24 UCFB208-25	FB208		
	1 9/16	6 15/32	3 15/16	1 3/8	1 31/32	1 39/64	7/16	2 23/64	2 27/32	3 1/16	5/8	2 5/32	1 31/32	1.937	0.748	M10	UCFB208			
		164	100	35	50	41	11	60	72	78	16	20	50.2	49.2	19					
45	1 5/8															3/8	UCFB209-26 UCFB209-27	FB209		
	1 11/16	6 27/32	4 3/16	1 3/8	2 1/8	1 11/16	7/16	2 9/16	3	3 5/32	2 3/32	2 5/32	1 31/32	1.937	0.748	M10	UCFB209-28			
	1 3/4	174	106	35.5	54	43	11	65	76	80	18	20	50.2	49.2	19		UCFB209			
50	1 7/8															3/8	UCFB210-30 UCFB210-31	FB210		
	1 15/16	7 1/4	4 13/32	1 7/16	2 9/32	1 13/16	7/16	2 43/64	3 7/32	3 3/8	2 3/32	2 5/32	2 1/16	2.031	0.748	M10	UCFB210			
	2	184	112	36	58	46	11	68	82	86	18	20	52.6	51.6	19		UCFB210-32			

- Remarks
1. In Part No. of unit and units with covers, fitting codes follow bore diameter codes. (See **Table 10.5** in P.62.)
 2. Part No. of applicable grease fitting is A-1/4-28UNF.
 3. As for the triple seal type product (from 201 to 205 are the double seal type products), suffix code L3 (or L2) follows Part No. of unit or bearing. (Example of Part No.: UCFB206JL3, UC206L3)

Variations of tolerance of distance from mounting surface to center of spherical bore (ΔA_{2s}), variations of tolerance of distance between centers of bolt holes ($\Delta J_b, \Delta J_{1s}$), variations of tolerance of distance between both grooves (ΔH_{1s})

Unit: mm

Housing No.	ΔA_{2s}	ΔJ_b	ΔJ_{1s}	ΔH_{1s}
FB204~FB210	±0.5			

Variations of tolerance of bolt hole diameter (ΔN_b)

Unit: mm

Housing No.	ΔN_b
FB204~FB210	±0.2

Bearing No.	Basic Load Ratings kN		Factor f_0	Mass kg
	C_r	C_{0r}		
UC201	12.8	6.65	13.2	0.64
UC201-8				
UC202				
UC202-10				
UC203				
UC204-12				
UC204	14.0	7.85	13.9	0.59
UC205-14				
UC205-15				
UC205				
UC205-16	19.5	11.3	13.9	0.68
UC206-18				
UC206				
UC206-19				
UC206-20	25.7	15.4	13.9	0.92
UC207-20				
UC207-21				
UC207-22				
UC207				
UC207-23	29.1	17.8	14.0	1.3
UC208-24				
UC208-25				
UC208	34.1	21.3	14.0	1.8
UC209-26				
UC209-27				
UC209-28				
UC209	35.1	23.3	14.4	2.0
UC210-30				
UC210-31				
UC210				
UC210-32				2.3

4. For the dimensions and forms of applicable bearings, see the dimensional tables of ball bearing for unit.

5. Tapered bore (with adapter) type products are also available. (Example of Part No. : UKFB205J + H2305X, UK205 + H2305X)

Light 2-Bolt Flange Units

BLF
Cylindrical bore
(with set screws)
 d 12 ~ 35 mm

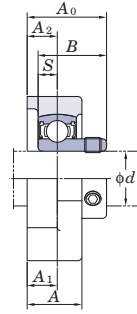
ALF
Cylindrical bore
(with eccentric locking collar)



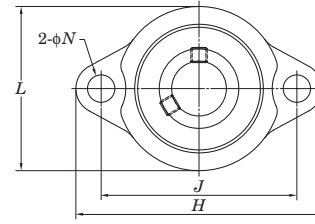
BLF



ALF

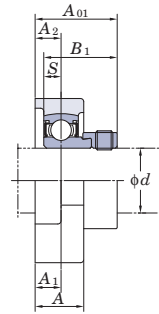


BLF



Shaft Dia. mm inch		Dimensions									Bolt Size inch mm		Unit No.	Bearing No.		
		inch mm														
d		H	L	A	J	N	A_1	A_2	S	BLF		ALF				
										A_0	B	A_{01}	B_1			
12	1/2	3 3/16	2 1/16	23/32	2 1/2	5/16	3/8	3/8	0.236	1	0.866	1 1/4	1.122	1/4 M6	BLF201	SB201
		81	52	18	63.5	8	9.5	9.5	6	25.5	22	32	28.5		BLF201-8	SB201-8
15	5/8	3 17/32	2 3/8	25/32	2 13/16	25/64	7/16	7/16	0.276	1 5/32	0.984	1 5/16	1.161	5/16 M8	BLF202	SB202
		90	60	20	71.5	10	11	11	7	29	25	33.5	29.5		BLF202-10	SB202-10
17	3/4	3 17/32	2 3/8	25/32	2 13/16	25/64	7/16	7/16	0.276	1 5/32	0.984	1 5/16	1.161	5/16 M8	BLF203	SB203
		90	60	20	71.5	10	11	11	7	29	25	33.5	29.5		BLF203	SB203
20	7/8	3 3/4	2 17/32	25/32	2 63/64	25/64	7/16	7/16	0.295	1 3/16	1.063	1 11/32	1.201	5/16 M8	BLF204	SB204
		95	64	20	76	10	11	11	7.5	30.5	27	34	30.5		BLF204-12	SB204-12
25	15/16	4 7/16	3	7/8	3 9/16	15/32	15/32	15/32	0.315	1 11/32	1.181	1 1/2	1.335	3/8 M10	BLF205	SB205
		113	76	22.5	90.5	12	12	12	8	34	30	37.9	33.9		BLF205-14	SB205-14
30	1 1/8	4 7/16	3	7/8	3 9/16	15/32	15/32	15/32	0.315	1 11/32	1.181	1 1/2	1.335	3/8 M10	BLF206	SB206
		113	76	22.5	90.5	12	12	12	8	34	30	37.9	33.9		BLF206-18	SB206-18
35	1 1/4	4 13/16	3 1/2	15/16	3 15/16	15/32	1/2	33/64	0.335	1 7/16	1.260	1 5/8	1.437	3/8 M10	BLF207	SB207
		122	89	24	100	12	13	13	8.5	36.5	32	41	36.5		BLF207-19	SB207-19
35	1 5/16	4 13/16	3 1/2	15/16	3 15/16	15/32	1/2	33/64	0.335	1 7/16	1.260	1 5/8	1.437	3/8 M10	BLF207-20	SB207-20
		122	89	24	100	12	13	13	8.5	36.5	32	41	36.5		BLF207-22	SB207-22
35	1 3/8	4 13/16	3 1/2	15/16	3 15/16	15/32	1/2	33/64	0.335	1 7/16	1.260	1 5/8	1.437	3/8 M10	BLF207-23	SB207-23
		122	89	24	100	12	13	13	8.5	36.5	32	41	36.5		BLF207-23	SB207-23

- Remarks
1. In Part No. of unit and units with covers, fitting codes follow bore diameter codes. (See **Table 10.5** in P.62.)
 2. Allowable load to housing in radial direction is approximately half of basic load rating of bearing, C_r (when safety factor is 4).
 3. For the dimensions and forms of applicable bearings, see the dimensional tables of ball bearing for unit.



ALF

Variations of tolerance of distance from mounting surface to center of spherical bore (ΔA_{2s}) and variations of tolerance of distance between centers of bolt holes (ΔJ_s)

Housing No.	ΔA_{2s}	ΔJ_s
LF203~LF207	± 0.5	± 0.7

Unit: mm

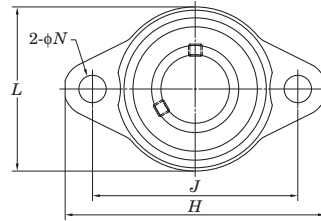
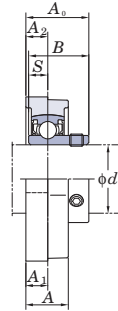
Variations of tolerance of bolt hole diameter (ΔN_s)

Housing No.	ΔN_s
LF203~LF207	± 0.2

Unit: mm

Unit No.	Bearing No.	Housing No.	Basic Load Ratings		Factor f_0	Mass	
			kN			kg	
			C_r	C_{0r}		BLF	ALF
ALF201 ALF201-8 ALF202 ALF202-10 ALF203	SA201 SA201-8 SA202 SA202-10 SA203	LF203	9.55	4.80	13.2	0.25	0.28
ALF204-12 ALF204	SA204-12 SA204	LF204	12.8	6.65	13.2	0.33	0.33
ALF205-14 ALF205-15 ALF205 ALF205-16	SA205-14 SA205-15 SA205 SA205-16	LF205	14.0	7.85	13.9	0.38	0.42
ALF206-18 ALF206 ALF206-19 ALF206-20	SA206-18 SA206 SA206-19 SA206-20	LF206	19.5	11.3	13.9	0.57	0.60
ALF207-20 ALF207-21 ALF207-22 ALF207 ALF207-23	SA207-20 SA207-21 SA207-22 SA207 SA207-23	LF207	25.7	15.4	13.9	0.77	0.85

UFL
Cylindrical bore (with set screws)
d 8 ~ 30 mm

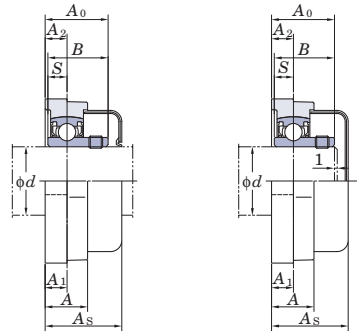


Shaft Dia. mm	Dimensions										Bolt Size	Standard		
	inch mm											Unit No.	Housing No.	Bearing No.
<i>d</i>	<i>H</i>	<i>L</i>	<i>A</i>	<i>J</i>	<i>N</i>	<i>A</i> ₁	<i>A</i> ₂	<i>A</i> ₀	<i>B</i>	<i>S</i>	inch mm			
8	1 7/8	1 1/16	11/32	1 29/64	3/16	5/32	5/32	1/2	0.472	0.1378	No.8	UFL08	FL08	SU08
	48	27	8.5	37	4.8	4	4	12.5	12	3.5	M4			
10	2 3/8	1 13/32	15/32	1 49/64	9/32	1/4	15/64	5/8	0.591	0.197	1/4	UFL000	FL000	SU000
	60	36	12	45	7	6	6	16	15	5	M6			
12	2 15/32	1 1/2	15/32	1 57/64	9/32	1/4	15/64	5/8	0.591	0.197	1/4	UFL001	FL001	SU001
	63	38	12	48	7	6	6	16	15	5	M6			
15	2 5/8	1 21/32	1/2	2 3/32	9/32	1/4	1/4	11/16	0.650	0.217	1/4	UFL002	FL002	SU002
	67	42	13	53	7	6.5	6.5	17.5	16.5	5.5	M6			
17	2 25/32	1 13/16	9/16	2 13/64	9/32	9/32	9/32	23/32	0.689	0.236	1/4	UFL003	FL003	SU003
	71	46	14	56	7	7	7	18.5	17.5	6	M6			
20	3 17/32	2 5/32	5/8	2 51/64	13/32	5/16	5/16	7/8	0.827	0.276	5/16	UFL004	FL004	SU004
	90	55	16	71	10	8	8	22	21	7	M8			
25	3 3/4	2 3/8	5/8	2 61/64	13/32	5/16	5/16	29/32	0.866	0.276	5/16	UFL005	FL005	SU005
	95	60	16	75	10	8	8	23	22	7	M8			
30	4 13/32	2 3/4	23/32	3 11/32	1/2	11/32	23/64	1 1/32	0.965	0.295	3/8	UFL006	FL006	SU006
	112	70	18	85	13	9	9	26	24.5	7.5	M10			

Remarks 1. In Part No. of unit and units with covers, fitting codes follow bore diameter codes. (See **Table 10.5** in P.62.)
 2. For the dimensions and forms of applicable bearings, see the dimensional tables of ball bearing for unit.

With Through Type Cover

With One Side Sealed Cover



Variations of tolerance of distance from mounting surface to center of spherical bore (Δ_{A2s}) and variations of tolerance of distance between centers of bolt holes (Δ_{J5})

Housing No.	Unit: mm	
	Δ_{A2s}	Δ_{J5}
FL08	±0.5	±0.3
FL000~FL006		

Variations of tolerance of bolt hole diameter (Δ_{Ns})

Housing No.	Unit: mm
	Δ_{Ns}
FL08	±0.2
FL000~FL006	

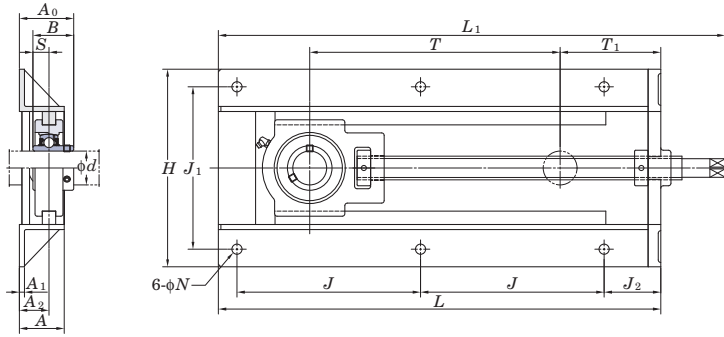
	Mass kg	Basic Load Ratings kN		Factor f_0	With Rubber Coated Cover		Dimension		Mass kg
		C_r	C_{0r}		Unit No.		mm	inch	
					Open Type	Closed Type			
0.030	3.27	1.37	12.4	-	-	-	-	-	
0.050	4.55	1.95	12.3	UFL000C	UFL000D	20.5	$13/16$	0.05	
0.065	5.10	2.40	13.2	UFL001C	UFL001D	20.5	$13/16$	0.07	
0.085	5.60	2.85	13.9	UFL002C	UFL002D	22	$7/8$	0.09	
0.11	6.00	3.25	14.4	UFL003C	UFL003D	23.5	$15/16$	0.11	
0.18	9.40	5.05	13.9	UFL004C	UFL004D	27	$1 \ 1/16$	0.18	
0.23	10.1	5.85	14.5	UFL005C	UFL005D	28	$1 \ 3/32$	0.23	
0.31	13.2	8.25	14.7	UFL006C	UFL006D	31	$1 \ 7/32$	0.31	

Section Steel Frame Take-Up Units

UCTH

Cylindrical bore (with set screws)

d 12 ~ 65 mm

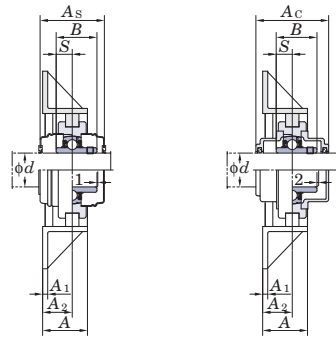


Shaft Dia.		Dimensions															Bolt Size	Standard Unit No.
mm	inch	inch mm																
d		H	L	L_1	A	J	J_1	J_2	N	T	T_1	A_1	A_2	A_0	B	S	mm	
12	1/2																3/8	UCTH201-150 UCTH201-8-150 UCTH202-150 UCTH202-10-150 UCTH203-150 UCTH204-12-150 UCTH204-150
15	5/8	7 7/8	12 17/32	14 13/16	1 31/32	4 39/64	6 1/16	2 9/16	1 5/32	6 1/32	3 15/32	1/4	1 7/64	1 13/16	1.220	0.500	M10	
17	3/4	200	318	376	50	117	154	65	12	153	88	6	28	46.3	31	12.7		
20																		UCTH205-14-150 UCTH205-15-150 UCTH205-150 UCTH205-16-150
25	7/8	7 7/8	12 17/32	14 27/32	1 31/32	4 39/64	6 1/16	2 9/16	1 5/32	5 31/32	3 15/32	1/4	1 7/64	1 7/8	1.343	0.563	M10	
	15/16	200	318	377	50	117	154	65	12	152	88	6	28	47.8	34.1	14.3		
	1																	UCTH206-18-150 UCTH206-150 UCTH206-19-150 UCTH206-20-150
30	1 1/8	8 3/8	13 7/32	16 1/32	1 31/32	4 31/32	6 17/32	2 9/16	1 5/32	5 5/8	3 15/16	1/4	1 17/64	2 1/8	1.500	0.626	M10	
	1 3/16	213	336	407	50	126	166	65	12	143	100	6	32	54.2	38.1	15.9		
	1 1/4																	UCTH207-20-230 UCTH207-21-230 UCTH207-22-230 UCTH207-230 UCTH207-23-230
35	1 1/4	8 3/8	16 15/16	19 11/16	1 31/32	6 13/16	6 17/32	2 9/16	1 5/32	8 5/8	4 7/32	1/4	1 17/64	2 1/4	1.689	0.689	M10	
	1 5/16	213	430	500	50	173	166	65	12	219	107	6	32	57.4	42.9	17.5		
	1 3/8																	
	1 7/16																	
40	1 1/2	9 7/32	20 19/32	23 19/32	1 31/32	8 35/64	7 9/16	2 5/8	1 5/32	11 21/32	4 11/16	1/4	1 3/8	2 9/16	1.937	0.748	M10	
	1 9/16	234	523	599	50	217	192	67	12	296	119	6	35	65.2	49.2	19		
																		UCTH208-24-300 UCTH208-25-300 UCTH208-300
45	1 5/8	9 7/32	20 19/32	23 17/32	1 31/32	8 35/64	7 9/16	2 5/8	1 5/32	11 11/16	4 21/32	1/4	1 3/8	2 9/16	1.937	0.748	M10	
	1 11/16	234	523	598	50	217	192	67	12	297	118	6	35	65.2	49.2	19		
	1 3/4																	UCTH209-26-300 UCTH209-27-300 UCTH209-28-300 UCTH209-300
50	1 7/8	9 7/32	20 3/4	23 3/4	1 31/32	8 5/8	7 9/16	2 5/8	1 9/32	11 21/32	4 3/4	1/4	1 3/8	2 21/32	2.031	0.748	M12	
	1 15/16	234	527	603	50	219	192	67	15	296	121	6	35	67.6	51.6	19		
	2																	UCTH210-30-300 UCTH210-31-300 UCTH210-300 UCTH210-32-300
55	2	11 31/32	21 15/32	24 3/4	2 9/16	9 1/16	9 7/16	2 15/32	1 9/32	11 15/32	5 9/16	1/4	1 1/2	2 13/16	2.189	0.874	M12	
	2 1/8	304	545	629	65	230	240	63	15	291	141	6	38	71.4	55.6	22.2		
	2 3/16																	UCTH211-32-300 UCTH211-34-300 UCTH211-300 UCTH211-35-300
	2 1/4																	UCTH212-36-300
60	2 3/8	11 31/32	22 15/32	25 5/8	2 9/16	9 9/16	9 7/16	2 15/32	1 9/32	11 11/32	6 1/16	1/4	1 1/2	3 1/16	2.563	1.000	M12	
	2 7/16	304	571	651	65	243	240	63	15	288	154	6	38	77.7	65.1	25.4		
																		UCTH212-300 UCTH212-38-300 UCTH212-39-300
65	2 1/2	13 1/16	23 31/32	28 1/16	2 9/16	10 15/64	10 15/64	2 5/8	1 9/32	11 13/16	7	1/4	1 11/16	3 1/4	2.563	1.000	M12	
		332	609	713	65	260	260	67	15	300	178	6	43	82.7	65.1	25.4		
																		UCTH213-40-300 UCTH213-300

- Remarks
1. In Part No. of unit and units with covers, fitting codes follow bore diameter numbers. (See Table 10.5 in P.62.)
 2. Part No. of applicable grease fittings are shown below.
B-1/4-28UNF 201~210
B-R1/8 211~213
 3. As for the triple seal type product (from 201 to 205 are the double seal type products), suffix code L3 (or L2) follows the Part No. of unit or bearing. (Example of Part No. : UCTH206JL3-150, UC206L3)

With Pressed Steel Cover

With Cast Iron Cover



Variations of tolerance of distance between centers of bolt holes (ΔJ_{1s} , ΔJ_{1s})

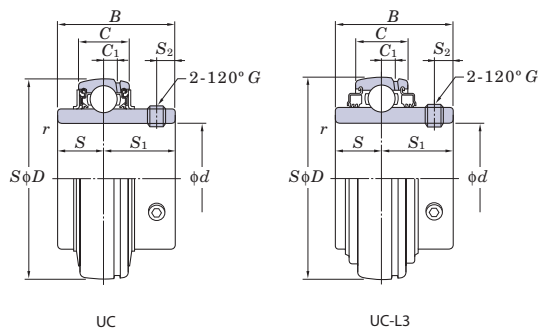
Nominal unit code	ΔJ_{1s}	ΔJ_{1s}
UCTH201~UCTH213	± 0.5	± 0.5

Unit: mm

Bearing No.	Mass kg	Basic Load Ratings kN		Factor f_0	With Pressed Steel Cover				With Cast Iron Cover					
		C_r	C_{0r}		Unit No.		Dimension		Mass kg	Unit No.		Dimension		Mass kg
					Open Type	One Side Closed Type	mm	inch		Open Type	One Side Closed Type	mm	inch	
UC201	6.7	12.8	6.65	13.2	UCTH201C-150	UCTH201CD-150	45	1 25/32	6.7	—	—	—	—	—
UC201-8	6.7				—	—	—	—	—	—	—	—	—	—
UC202	6.7				UCTH202C-150	UCTH202CD-150	45	1 25/32	6.7	—	—	—	—	—
UC202-10	6.7				—	—	—	—	—	—	—	—	—	—
UC203	6.7				UCTH203C-150	UCTH203CD-150	45	1 25/32	6.7	—	—	—	—	—
UC204-12	6.7				—	—	—	—	—	—	—	—	—	—
UC204	6.7				UCTH204C-150	UCTH204CD-150	45	1 25/32	6.7	UCTH204FC-150	UCTH204FCD-150	62	2 7/16	7.0
UC205-14	6.7	14.0	7.85	13.9	—	—	—	—	—	—	—	—	—	
UC205-15	6.7				—	—	—	—	—	—	—	—	—	
UC205	6.7				UCTH205C-150	UCTH205CD-150	49	1 15/16	6.7	UCTH205FC-150	UCTH205FCD-150	66	2 19/32	7.1
UC205-16	6.7				—	—	—	—	—	—	—	—	—	
UC206-18	8.0	19.5	11.3	13.9	—	—	—	—	—	—	—	—	—	
UC206	8.0				UCTH206C-150	UCTH206CD-150	53	2 3/32	8.0	UCTH206FC-150	UCTH206FCD-150	70	2 3/4	8.5
UC206-19	8.0				—	—	—	—	—	—	—	—	—	
UC206-20	8.0				—	—	—	—	—	—	—	—	—	
UC207-20	10.5	25.7	15.4	13.9	—	—	—	—	—	—	—	—	—	
UC207-21	10.5				—	—	—	—	—	—	—	—	—	
UC207-22	10.5				—	—	—	—	—	—	—	—	—	
UC207	10.5				UCTH207C-230	UCTH207CD-230	60	2 3/8	10.5	UCTH207FC-230	UCTH207FCD-230	78	3 1/16	11.2
UC207-23	10.5				—	—	—	—	—	—	—	—	—	
UC208-24	12.5	29.1	17.8	14.0	—	—	—	—	—	—	—	—	—	
UC208-25	12.5				—	—	—	—	—	—	—	—	—	
UC208	12.5				UCTH208C-300	UCTH208CD-300	69	2 23/32	12.5	UCTH208FC-300	UCTH208FCD-300	86	3 3/8	13.3
UC209-26	12.4	34.1	21.3	14.0	—	—	—	—	—	—	—	—	—	
UC209-27	12.4				—	—	—	—	—	—	—	—	—	
UC209-28	12.4				—	—	—	—	—	—	—	—	—	
UC209	12.4				UCTH209C-300	UCTH209CD-300	69	2 23/32	12.4	UCTH209FC-300	UCTH209FCD-300	88	3 15/32	13.2
UC210-30	12.6	35.1	23.3	14.4	—	—	—	—	—	—	—	—	—	
UC210-31	12.6				—	—	—	—	—	—	—	—	—	
UC210	12.6				UCTH210C-300	UCTH210CD-300	74	2 29/32	12.6	UCTH210FC-300	UCTH210FCD-300	97	3 13/16	13.6
UC210-32	12.6				—	—	—	—	—	—	—	—	—	
UC211-32	20.1	43.4	29.4	14.4	—	—	—	—	—	—	—	—	—	
UC211-34	20.1				—	—	—	—	—	—	—	—	—	
UC211	20.1				UCTH211C-300	UCTH211CD-300	76	3	20.1	UCTH211FC-300	UCTH211FCD-300	99	3 29/32	21.3
UC211-35	20.1				—	—	—	—	—	—	—	—	—	
UC212-36	21.4	52.4	36.2	14.4	—	—	—	—	—	—	—	—	—	
UC212	21.4				UCTH212C-300	UCTH212CD-300	89	3 1/2	21.4	UCTH212FC-300	UCTH212FCD-300	114	4 1/2	21.9
UC212-38	21.4				—	—	—	—	—	—	—	—	—	
UC212-39	21.4				—	—	—	—	—	—	—	—	—	
UC213-40	25.5	57.2	40.1	14.4	—	—	—	—	—	—	—	—	—	
UC213	25.5				UCTH213C-300	UCTH213CD-300	89	3 1/2	25.5	UCTH213FC-300	UCTH213FCD-300	114	4 1/2	27.2

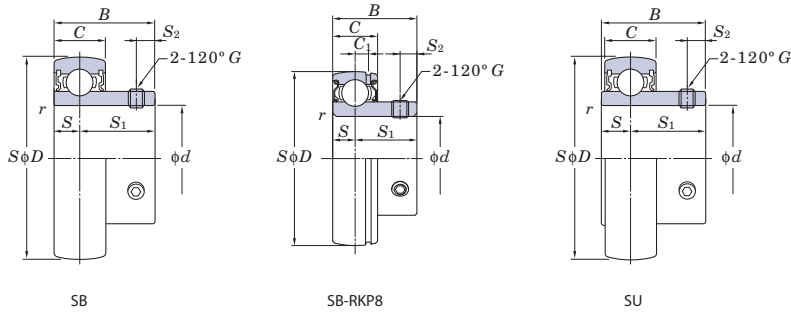
- If heavy load ($P_r/C_r > 0.12$), vibration, or impact occurs, contact with FYH.
- For the dimensions and forms of applicable bearings, see the dimensional tables of ball bearing for unit.
- Tapered bore (with adapter) type products are also available.
(Example of Part No. : UKTH205J-150 + H2305X, UK205 + H2305X)

UC, SB, SB-RKP8, SU
Cylindrical bore (with set screws)
 d 8 ~ 25 mm



Shaft Dia. mm inch d		Dimensions								Basic Load Ratings kN		Factor f_0	Bearing No.	
		D		B		C		r (min.)		C_r	C_{0r}		Standard	L3 Type
		mm	inch	mm	inch	mm	inch	mm	inch					
8	—	22	0.866	12	0.472	7	0.276	0.3	0.012	3.27	1.37	12.4	SU08	—
10	—	26	1.024	15	0.591	8	0.315	0.3	0.012	4.55	1.95	12.3	SU000	—
12	—	28	1.102	15	0.591	8	0.315	0.3	0.012	5.10	2.40	13.2	SU001	—
		40	1.575	22	0.866	12	0.472	0.6	0.024	9.55	4.80	13.2	SB201	—
		40	1.575	22	0.866	13	0.512	0.6	0.024	9.55	4.80	13.2	SB201RKP8	—
—	1/2	47	1.850	31	1.220	16	0.630	0.6	0.024	12.8	6.65	13.2	UC201	UC201L2
		40	1.575	22	0.866	12	0.472	0.6	0.024	9.55	4.80	13.2	SB201-8	—
		40	1.575	22	0.866	13	0.512	0.6	0.024	9.55	4.80	13.2	SB201-8RKP8	—
—	—	47	1.850	31	1.220	16	0.630	0.6	0.024	12.8	6.65	13.2	UC201-8	UC201-8L2
		32	1.260	16.5	0.650	9	0.354	0.3	0.012	5.60	2.85	13.9	SU002	—
		40	1.575	22	0.866	12	0.472	0.6	0.024	9.55	4.80	13.2	SB202	—
—	5/8	40	1.575	22	0.866	13	0.512	0.6	0.024	9.55	4.80	13.2	SB202RKP8	—
		40	1.575	22	0.866	13	0.512	0.6	0.024	9.55	4.80	13.2	SB202-10RKP8	—
		47	1.850	31	1.220	16	0.630	0.6	0.024	12.8	6.65	13.2	UC202-10	UC202-10L2
17	—	35	1.378	17.5	0.689	10	0.394	0.3	0.012	6.00	3.25	14.4	SU003	—
		40	1.575	22	0.866	12	0.472	0.6	0.024	9.55	4.80	13.2	SB203	—
		40	1.575	22	0.866	13	0.512	0.6	0.024	9.55	4.80	13.2	SB203RKP8	—
—	3/4	47	1.850	31	1.220	16	0.630	0.6	0.024	12.8	6.65	13.2	UC203	UC203L2
		47	1.850	25	0.984	14	0.551	1	0.039	12.8	6.65	13.2	SB204-12	—
		47	1.850	25	0.984	15	0.591	1	0.039	12.8	6.65	13.2	SB204-12RKP8	—
20	—	47	1.850	31	1.220	16	0.630	1	0.039	12.8	6.65	13.2	UC204-12	UC204-12L2
		42	1.654	21	0.827	12	0.472	0.6	0.024	9.40	5.05	13.9	SU004	—
		47	1.850	25	0.984	14	0.551	1	0.039	12.8	6.65	13.2	SB204	—
—	7/8	47	1.850	25	0.984	15	0.591	1	0.039	12.8	6.65	13.2	SB204RKP8	—
		52	2.047	27	1.063	15	0.591	1	0.039	14.0	7.85	13.9	SB205-14	—
		52	2.047	27	1.063	15	0.591	1	0.039	14.0	7.85	13.9	SB205-14RKP8	—
—	15/16	52	2.047	34.1	1.343	17	0.669	1	0.039	14.0	7.85	13.9	UC205-14	UC205-14L2
		52	2.047	27	1.063	15	0.591	1	0.039	14.0	7.85	13.9	SB205-15	—
		52	2.047	27	1.063	15	0.591	1	0.039	14.0	7.85	13.9	SB205-15RKP8	—
25	—	52	2.047	34.1	1.343	17	0.669	1	0.039	14.0	7.85	13.9	UC205-15	UC205-15L2
		47	1.850	22	0.866	12	0.472	0.6	0.024	10.1	5.85	14.5	SU005	—
		52	2.047	27	1.063	15	0.591	1	0.039	14.0	7.85	13.9	SB205	—
—	1	52	2.047	27	1.063	15	0.591	1	0.039	14.0	7.85	13.9	SB205RKP8	—
		52	2.047	34.1	1.343	17	0.669	1	0.039	14.0	7.85	13.9	UC205	UC205L2
		62	2.441	38	1.496	22	0.866	1.1	0.043	21.2	10.9	12.6	UC305	—
—	1 1/8	62	2.441	38.1	1.500	19	0.748	1	0.039	19.5	11.3	13.9	UCX05	UCX05L3
		52	2.047	27	1.063	15	0.591	1	0.039	14.0	7.85	13.9	SB205-16	—
		52	2.047	27	1.063	15	0.591	1	0.039	14.0	7.85	13.9	SB205-16RKP8	—
—	—	52	2.047	34.1	1.343	17	0.669	1	0.039	14.0	7.85	13.9	UC205-16	UC205-16L2
		62	2.441	38	1.496	22	0.866	1.1	0.043	21.2	10.9	12.6	UC305-16	—
		62	2.441	38.1	1.500	19	0.748	1	0.039	19.5	11.3	13.9	UCX05-16	UCX05-16L3
—	—	62	2.441	30	1.181	16	0.630	1	0.039	19.5	11.3	13.9	SB206-18	—
		62	2.441	30	1.181	18	0.709	1	0.039	19.5	11.3	13.9	SB206-18RKP8	—
		62	2.441	38.1	1.500	19	0.748	1	0.039	19.5	11.3	13.9	UC206-18	UC206-18L2

Remarks 1. SU type product is the clean series ball bearing for unit.
2. From UC201 to 205 are the double seal type products (L2).



	Dimensions								Set Screw Brg. Bore G		Mass kg
	C ₁		S		S ₁		S ₂		mm	inch	
	mm	inch	mm	inch	mm	inch	mm	inch			
	-	-	3.5	0.138	8.5	0.335	2.8	0.110	M3×0.35	-	0.012
	-	-	5	0.197	10	0.394	3	0.118	M3×0.35	-	0.024
	-	-	5	0.197	10	0.394	3	0.118	M3×0.35	-	0.026
	-	-	6	0.236	16	0.630	4	0.157	M5×0.5	-	0.10
	3.4	0.134	6	0.236	16	0.630	4	0.157	M5×0.5	-	0.10
	4	0.157	12.7	0.500	18.3	0.720	5	0.197	M6×0.75	-	0.21
	-	-	6	0.236	16	0.630	4	0.157	-	No.10-32UNF	0.10
	3.4	0.134	6	0.236	16	0.630	4	0.157	-	No.10-32UNF	0.10
	4	0.157	12.7	0.500	18.3	0.720	5	0.197	-	1/4-28UNF	0.21
	-	-	5.5	0.217	11	0.433	3.3	0.130	M4×0.5	-	0.038
	-	-	6	0.236	16	0.630	4	0.157	M5×0.5	-	0.10
	3.4	0.134	6	0.236	16	0.630	4	0.157	M5×0.5	-	0.10
	4	0.157	12.7	0.500	18.3	0.720	5	0.197	M6×0.75	-	0.19
	-	-	6	0.236	16	0.630	4	0.157	-	No.10-32UNF	0.10
	3.4	0.134	6	0.236	16	0.630	4	0.157	-	No.10-32UNF	0.10
	4	0.157	12.7	0.500	18.3	0.720	5	0.197	-	1/4-28UNF	0.19
	-	-	6	0.236	11.5	0.453	3.3	0.130	M4×0.5	-	0.050
	-	-	6	0.236	16	0.630	4	0.157	M5×0.5	-	0.10
	3.4	0.134	6	0.236	16	0.630	4	0.157	M5×0.5	-	0.10
	4	0.157	12.7	0.500	18.3	0.720	5	0.197	M6×0.75	-	0.18
	-	-	7	0.276	18	0.709	5	0.197	-	1/4-28UNF	0.15
	3.7	0.146	7	0.276	18	0.709	5	0.197	-	1/4-28UNF	0.19
	4	0.157	12.7	0.500	18.3	0.720	5	0.197	-	1/4-28UNF	0.16
	-	-	7	0.276	14	0.551	4	0.157	M5×0.5	-	0.080
	-	-	7	0.276	18	0.709	5	0.197	M6×0.75	-	0.15
	3.7	0.146	7	0.276	18	0.709	5	0.197	M6×0.75	-	0.19
	4	0.157	12.7	0.500	18.3	0.720	5	0.197	M6×0.75	-	0.16
	-	-	7.5	0.295	19.5	0.768	5.5	0.217	-	1/4-28UNF	0.18
	3.7	0.146	7.5	0.295	19.5	0.768	5.5	0.217	-	1/4-28UNF	0.19
	5	0.197	14.3	0.563	19.8	0.780	5.5	0.217	-	1/4-28UNF	0.23
	-	-	7.5	0.295	19.5	0.768	5.5	0.217	-	1/4-28UNF	0.18
	3.7	0.146	7.5	0.295	19.5	0.768	5.5	0.217	-	1/4-28UNF	0.19
	5	0.197	14.3	0.563	19.8	0.780	5.5	0.217	-	1/4-28UNF	0.21
	-	-	7	0.276	15	0.591	4.5	0.177	M5×0.5	-	0.10
	-	-	7.5	0.295	19.5	0.768	5.5	0.217	M6×0.75	-	0.18
	3.7	0.146	7.5	0.295	19.5	0.768	5.5	0.217	M6×0.75	-	0.19
	5	0.197	14.3	0.563	19.8	0.780	5.5	0.217	M6×0.75	-	0.20
	6	0.236	15	0.591	23	0.906	6	0.236	M6×0.75	-	0.45
	5	0.197	15.9	0.626	22.2	0.874	6	0.236	M6×0.75	-	0.39
	-	-	7.5	0.295	19.5	0.768	5.5	0.217	-	1/4-28UNF	0.18
	3.7	0.146	7.5	0.295	19.5	0.768	5.5	0.217	-	1/4-28UNF	0.19
	5	0.197	14.3	0.563	19.8	0.780	5.5	0.217	-	1/4-28UNF	0.20
	6	0.236	15	0.591	23	0.906	6	0.236	M6×0.75	-	0.44
	5	0.197	15.9	0.626	22.2	0.874	6	0.236	-	1/4-28UNF	0.38
	-	-	8	0.315	22	0.866	6	0.236	-	1/4-28UNF	0.27
	4.7	0.185	8	0.315	22	0.866	6	0.236	-	1/4-28UNF	0.31
	5	0.197	15.9	0.626	22.2	0.874	6	0.236	-	1/4-28UNF	0.34

Ball Bearing Units

Cast Iron, Pillow Blocks

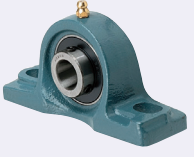
MISUMI C-VALUE [Medium Accuracy] Ball Bearing Units

Cast Iron, Pillow Blocks

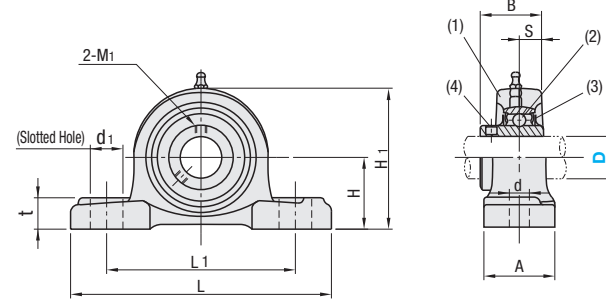
Compared to similar products, Max. 51% OFF

Similar Product Pages P.1051

Similar Products Comparison Points | Products designed for light load, intermediate and low rotation speed, and medium rotational accuracy applications. See P.1015 for the description of C-VALUE Products.




PDR (Pillow Blocks)



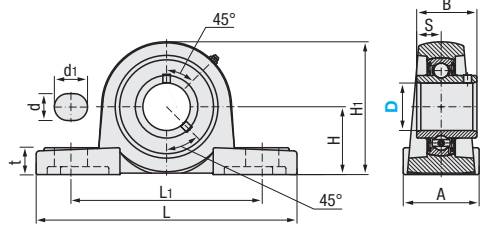
Accuracy: JIS B 1558
 JIS B 1514
 JIS B 1559

Bearing Inner Diameter Tolerance: H7 (Clearance Fit)
 Operating Temperature: -15 ~ +100°C
 Grease Fitting Nominal Dia.: 1/4-28UNF (Unified Standards)
 ⚠ Ball bearing moves slightly due to self-aligning function.

Component	Material
(1) Housing	FC200
(2) Bearing	SUJ2
(3) Rubber Seal	Nitrile Rubber (NBR)
(4) Set Screw	SCM435



C-PDR (Pillow Blocks)



Accuracy : JIS B 1558
 JIS B 1514
 JIS B 1559

Bearing Inner Diameter Tolerance : H7 (Clearance Fit)
 Operating Temperature : -25 ~ +60°C
 Grease Fitting Nominal Dia. : 1/4-28UNF (Unified Standards)
 ⚠ Ball bearing moves slightly due to self-aligning function.

Component	Material
(1) Housing	HP200
(2) Bearing	GCR15
(3) Rubber Seal	Nitrile Rubber (NBR)
(4) Set Screw	S45C

Part Number	Type	D	JIS Nominal	H	L	L ₁	A	d ₁	d	M	ℓ	t	H ₁	B	S	Basic Load Rating (kN)		Set Screw		Mass (g)	Unit Price		
																C _r (Dynamic)	C _{or} (Static)	M ₁	Tightening Torque (N·cm)			Axial Load Capacity (N)	
12	UCP201																				650		
15	UCP202		30.2		127	95		19	13	M10x1.5	12	15	62	31	12.7	12.8	6.6	M6x0.75	392	640	630		
17	UCP203						38														620		
20	UCP204		33.3										65								1280	650	
25	UCP205		36.5	140	105			16			15	16	70	34.1	14.3	14	7.9		490	1400	790		
30	UCP206		42.9	165	121		48	21			18	18	83	38.1	15.9	11.3				1960	1260		
35	UCP207		47.6	167	127				17	M14x2.0	20	19	94	42.9	17.5	15.4				2590	1590		
40	UCP208		49.2	184	137		54	25			20	19	100	49.2		19				2930	1920		
45	UCP209		54	190	146			22			20	108	108	54	19	33	20.5			3300	2190		
50	UCP210		57.2	206	159	60	25	20	20	M16x2.0	22	114	114	51.6		35.5	23.2			2350	3550	2590	

Part Number	Type	D	JIS Nominal	H	L	L ₁	A	d ₁	d	t	H ₁	B	S	Basic Load Rating (kN)		Set Screw		Mass (g)	Unit Price		
														C _r (Dynamic)	C _{or} (Static)	M ₁	Tightening Torque (N·cm)			Axial Load Capacity (N)	
20	UCP204		33.3	127	96			19		15	65	31	12.7	12.8	6.6						
25	UCP205		36.5	140	105		38		13	16	71	34.1	14.3	14	7.9			M6x1	400	1280	700
30	UCP206		42.9	165	121					17	83	38.1	15.9	19.5	11.3					1960	1300
35	UCP207		47.6	167	126		48		21	17	83	38.1	15.9	25.7	15.3			M8x1	850	2590	1600
40	UCP208		49.2	184	136		54			18	100	49.2	19	29.1	17.9					2930	1900

Ordering Example Part Number **PDR20**

Ordering Example Part Number **C-PDR20**

kgf=Nx0.101972

kgf=Nx0.101972

Ball Bearing Units

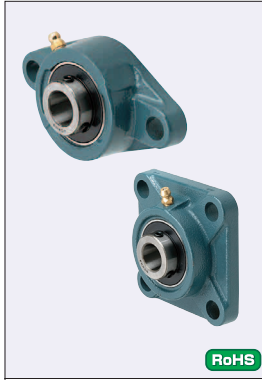
Cast Iron, Flanged

MISUMI C-VALUE [Medium Accuracy] Ball Bearing Units

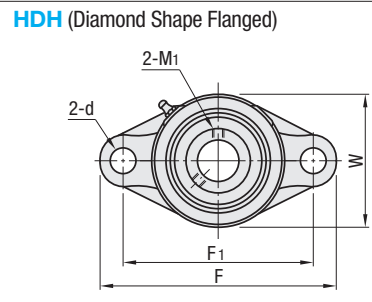
Cast Iron, Flanged

Compared to similar products, Max. 51% OFF

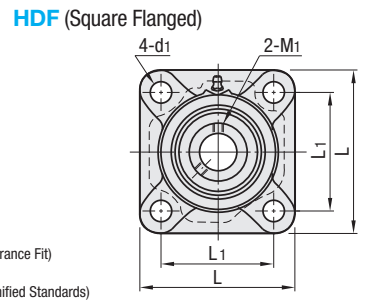
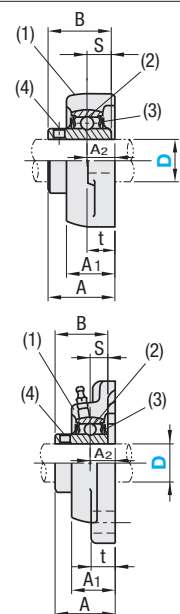
Similar Product Pages P.1024



HDH (Diamond Shape Flanged)




HDF (Square Flanged)

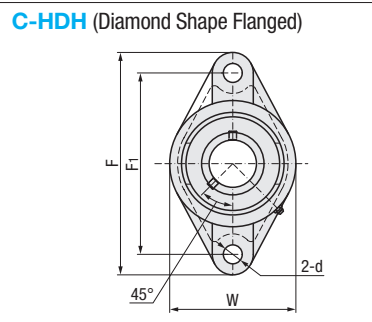
Component	Material
(1) Housing	FC200
(2) Bearing	SUJ2
(3) Rubber Seal	Nitrile Rubber (NBR)
(4) Set Screw	SCM435

Accuracy: JIS B 1558
 JIS B 1514
 JIS B 1559
 Bearing Inner Diameter Tolerance: H7 (Clearance Fit)
 Operating Temperature: -15 ~ +100°C
 Grease Fitting Nominal Dia.: 1/4-28UNF (Unified Standards)
 ⚠️ Ball bearing moves slightly due to self-aligning function.

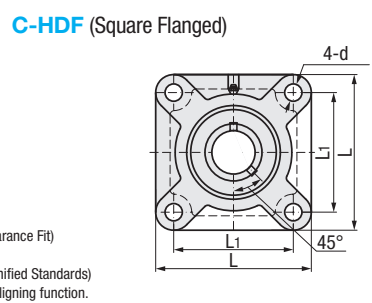
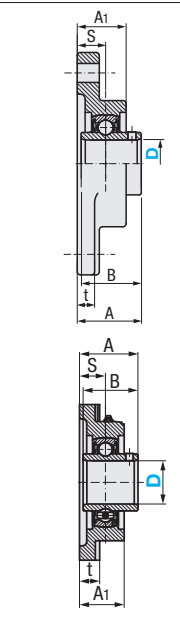
Similar Products Comparison Points | Products designed for light load, intermediate and low rotation speed, and medium rotational accuracy applications. See P.1015 for the description of C-VALUE Products.



C-HDH (Diamond Shape Flanged)



C-HDF (Square Flanged)

Component	Material
(1) Housing	HP200
(2) Bearing	GCR15
(3) Rubber Seal	Nitrile Rubber (NBR)
(4) Set Screw	S45C

Accuracy: JIS B 1558
 JIS B 1514
 JIS B 1559
 Bearing Inner Diameter Tolerance: H7 (Clearance Fit)
 Operating Temperature: -25 ~ +60°C
 Grease Fitting Nominal Dia.: 1/4-28UNF (Unified Standards)
 ⚠️ Ball bearing moves slightly due to self-aligning function.

Part Number	JIS Nominal		F	F1	W	L	L1	t	A	A1	A2	d	d1	B	S	Basic Load Rating (kN)		Set Screw		Mass (g)		Unit Price																		
	Type	D														HDH	HDF	Cr (Dynamic)	Cor (Static)	M1	Tightening Torque (N·cm)	Axial Load Capacity (N)	HDH	HDF	HDH	HDF														
HDH HDF	12	UCFL201	UCF201	113	90	60	86	64	12	33.3	25.5	15	12	31	12.7	12.8	6.6	M6x0.75	392	640	470	630																		
	15	UCFL202	UCF202																		450	610																		
	17	UCFL203	UCF203																		440	600																		
	20	UCFL204	UCF204	130	99	68	95	70	14	35.8	27	16	12	34.1	14.3	14	7.9	M6x0.75	490	1280	420	580																		
	25	UCFL205	UCF205																		1400	590	720																	
	30	UCFL206	UCF206																		148	117	80	108	83	40.2	31	18	16	38.1	15.9	19.6	11.3	M8x1	1180	2930	1510	1770		
	35	UCFL207	UCF207																		161	130	90	117	92	44.4	34	19	16	42.9	17.5	25.9	15.4	M8x1	1180	2590	1200	1380		
	40	UCFL208	UCF208	175	144	100	130	102	51.2	36	21	16	49.2	19	29.3	17.9	M8x1	1180	2930	1510	1770																			
	45	UCFL209	UCF209	188	148	108	137	105	52.2	38	22	19	49.2	19	33	20.5	M8x1	1180	3300	1900	2070																			
	50	UCFL210	UCF210	197	157	115	143	111	54.6	40	22	19	51.6	19	35.5	23.2	M10x1.25	2350	3550	2200	2360																			

Part Number	JIS Nominal		F	F1	W	L	L1	t	A	A1	A2	d	d1	B	S	Basic Load Rating (kN)		Set Screw		Mass (g)		Unit Price		
	Type	D														HDH	HDF	Cr (Dynamic)	Cor (Static)	M1	Tightening Torque (N·cm)	Axial Load Capacity (N)	HDH	HDF
C-HDH C-HDF	20	UCFL204	UCF204	113	90	62	88	63.5	12	33.3	25.5	15	12	31.0	12.7	12.8	6.6	M6x1	400	1280	700	500		
	25	UCFL205	UCF205																		125	99	70	97
	30	UCFL206	UCF206	142	116.5	83	110	82.5	13	40.2	31	18	38.1	15.9	19.6	11.3	M6x1	400	1960	1100	900			
	35	UCFL207	UCF207	156	130	96	119	92	14	44.4	34	19	42.9	17.5	25.9	15.4	M8x1	850	2590	1500	1200			
	40	UCFL208	UCF208	172	143.5	105	132	101.5	15	51.2	36	21	49.2	19	29.3	17.9	M8x1	850	2930	1900	1600			
	45	UCFL209	UCF209	188	148	108	137	105	52.2	38	22	19	49.2	19	33	20.5	M8x1	850	3300	1900	1600			

Ordering Example
 Part Number
HDH25
HDF35

Ordering Example
 Part Number
C-HDH25
C-HDF35

kgf=Nx0.101972

kgf=Nx0.101972