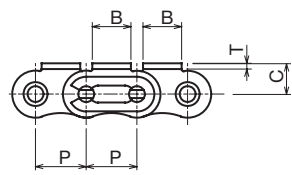
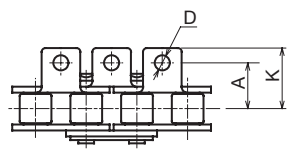


Roller Chains with Attachments A1-type Attachments

● Order No. Example

40-2L A1 240 Links
10ft
3m

Chain No. Configuration Type Unit



Chains where attachments are attached to roller chains. Dimensions comply with JIS.
 Can be used as a highly accurate small conveyor type.

Chain No.	Attachment		Plate Thickness T	D	Attachment				Average Tensile Strength kN (kgf)	Maximum Allowable Tension kN (kgf)
	Configuration	Type			A	B	C	K		
40	ALL	A1	1.5	3.6	12.7	9.5	7.9	17.4	17.2 (1,750)	2.75 (280)
50	2L		2.0	5.2	15.9	12.7	10.3	22.3	27.9 (2,850)	4.41 (450)
60	3L		2.4	5.2	19.05	15.9	11.9	27.2	39.5 (4,000)	6.28 (640)
80	4L		3.2	6.8	25.40	19.1	15.9	35.2	68.6 (7,000)	10.69 (1,090)
	6L									

Chain No.	Attachment Attached per Location Approx. Weight g	Approx. Weight kg/m	No. of Links	m	Unit						JL	
					No. in Box (Quantity)	ALL ¥	2L ¥	3L ¥	4L ¥	6L ¥	A1 ¥	
40	1.4	0.61	240L	3	15							
50	3.2	1.01	192L		8							
60	5.6	1.49	160L		5							
80	13.0	2.50	120L		4							



Chain No. Configuration Type Unit and Quantity



Same-day shipping (Unit Only)

* Products with dimensional cutting are shipped in 3 working days.



* There are no OL for chains with attachments.
 * Dimensional cutting products will be charged as a combination of product price with chain cutting fee included.



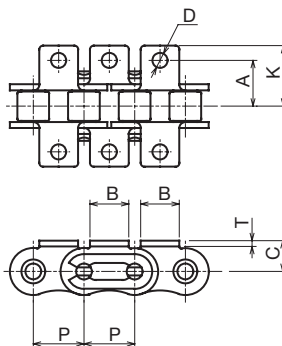
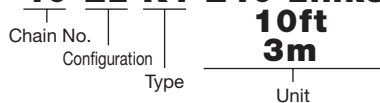
For continued lubrication and effective anti-corrosion, protect your chains with Kanalon. See P344



Roller Chains with Attachments K1 Type Attachments

● Order No. Example

40-2L K1 240 Links



Chain No.	Attachment		Plate Thickness T	D	Attachment				Average Tensile Strength kN (kgf)	Maximum Allowable Tension kN (kgf)
	Configuration	Type			A	B	C	K		
40	ALL	K1	1.5	3.6	12.7	9.5	7.9	17.4	17.2 (1,750)	2.75 (280)
50	2L		2.0	5.2	15.9	12.7	10.3	22.3	27.9 (2,850)	4.41 (450)
60	3L		2.4	5.2	19.05	15.9	11.9	27.2	39.5 (4,000)	6.28 (640)
80	4L		3.2	6.8	25.4	19.1	15.9	35.2	68.6 (7,000)	10.69 (1,090)

Chain No.	Attachment		Approx. Weight kg/m	No. of Links	Unit					JL	
	Attached per Location	Approx. Weight g			m	No. in Box (Quantity)	ALL ¥	2L ¥	3L ¥	4L ¥	K1 ¥
40	2.8	0.61	240L	3	8						
50	6.2	1.01	192L		5						
60	12.0	1.49	160L		4						
80	26.0	2.50	120L		3						



Order Method

Chain No. Configuration Type Unit and Quantity



Postage

Same-day shipping (Unit Only)

* Products with dimensional cutting are shipped in 3 working days.



Precautions

* There are no OL for chains with attachments.

* Dimensional cutting products will be charged as a combination of product price with chain cutting fee included.



Use Examples

For continued lubrication and effective anti-corrosion, protect your chains with Kanalon. See P344



Double Pitch Roller Chains with Attachments



A1/A2-type Attachments

Order No. Example

C2040-2L A1 120 Links

10ft 3m

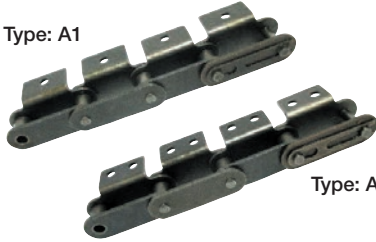
Chain No.

Configuration

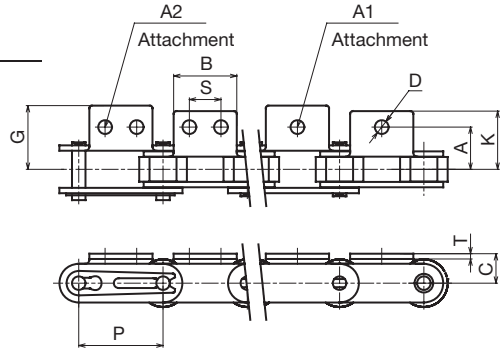
Type

Unit

Type: A1



Type: A2



Double pitch roller chains are roller chains for transmission with a double pitch. Small conveyor chains, each part of which is the same as roller chains and which are excellent in rupture strength and wear resistance. The R-type and S-type are available for rollers, and the A1/2 and K1/2 types for chains with attachments.

Chain No.		Attachment		Pitch P	Common Dimensions				Attachment A1/A2				
Type	Roller Shape	Config-uration	Type		C	B	D	T	A	K	G	S	
C2040	S	ALL 2L	A1 A2	25.40	9.1	19.1	3.6	1.5	12.7	17.4	19.0	9.5	
C2042	R			31.75	11.1	23.8	5.2	2.0	15.9	21.9	24.0	11.9	
C2050	S			38.10	14.7	28.6	5.2	3.2	21.45	28.4	31.8	14.30	
C2052	R			50.80	19.1	38.1	6.8	4.0	27.8	37.0	41.1	19.10	
C2060H	S												
C2062H	R												
C2080H	S												
C2082H	R												

Chain No.		Average	Maximum	Attachment	Approx.	Unit					JL	
Type	Roller Shape	Tensile Strength kN (kgf)	Allowable Tension kN (kgf)	Attached per Location Approx. Weight g	Weight kg/m	No. of Links	m	No. in Box (Quantity)	ALL ¥	2L ¥	A1/A2 ¥	
C2040	S	17.2 (1,750)	2.63 (270)	3	0.48 0.82	120L	3	10				
C2042	R											
C2050	S	27.9 (2,850)	4.31 (440)	7	0.79 1.25			96L	6			
C2052	R											
C2060H	S	39.5 (4,000)	6.28 (640)	16	1.43 2.11	80L	5	3				
C2062H	R											
C2080H	S	68.6 (7,000)	10.69 (1,090)	33	2.37 3.41	60L	3					
C2082H	R											



Order Method

Chain No. Configuration Type Unit and Quantity



Postage

Same-day shipping (Unit Only)

* Products with dimensional cutting are shipped in 3 working days.



Precautions

* There are no OL for chains with attachments.

* Dimensional cutting products will be charged as a combination of product price with chain cutting fee included.



Use Examples

For continued lubrication and effective anti-corrosion, protect your chains with Kanalon. See P344



Double Pitch Roller Chains with Attachments

K1/K2-type Attachments

● Order No. Example

C2040-2L K1 120 Links

Chain No.

Configuration

Type

120 Links

10ft

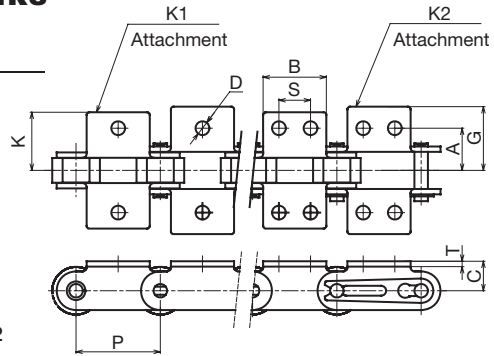
3m

Unit

Type: K1



Type: K2



Chain No.		Attachment		Pitch P	Common Dimensions				Attachment K1/K2				
Type	Roller Shape	Config-uration	Type		C	B	D	T	A	K	G	S	
C2040	S	ALL 2L	K1 K2	25.40	9.1	19.1	3.6	1.5	12.7	17.4	19.0	9.5	
C2042	R			31.75	11.1	23.8	5.2	2.0	15.9	21.9	24.0	11.9	
C2050	S			38.10	14.7	28.6	5.2	3.2	21.45	28.4	31.8	14.30	
C2052	R			50.80	19.1	38.1	6.8	4.0	27.8	37.0	41.1	19.10	
C2060H	S												
C2062H	R												
C2080H	S												
C2082H	R												

Chain No.		Average	Maximum	Attachment	Approx.	Unit					JL	
Type	Roller Shape	Tensile Strength kN (kgf)	Allowable Tension kN (kgf)	Attached per Location Approx. Weight g	Weight kg/m	No. of Links	m	No. in Box (Quantity)	ALL ¥	2L ¥	K1/K2 ¥	
C2040	S	17.2 (1,750)	2.63(270)	6	0.48 0.82	120L	3	7				
C2042	R											
C2050	S	27.9 (2,850)	4.31(440)	14	0.79 1.25			96L	4			
C2052	R											
C2060H	S	39.5 (4,000)	6.28(640)	32	1.43 2.11			80L	4			
C2062H	R											
C2080H	S	68.6 (7,000)	10.69(1,090)	66	2.37 3.41			60L	2			
C2082H	R											



Order Method

Chain No. Configuration Type Unit and Quantity



Postage

Same-day shipping (Unit Only)

* Products with dimensional cutting are shipped in 3 working days.



Precautions

* There are no OL for chains with attachments.

* Dimensional cutting products will be charged as a combination of product price with chain cutting fee included.



Use Examples

For continued lubrication and effective anti-corrosion, protect your chains with Kanalon. See P344



Standard Roller Chains / [S Type Roller] Double Pitch Chains

Chains with Attachments

40, 50, 60, 80 Series

■ **Features:** JIS A, Type 1 chains. Selectable for desired number of links.

■ **Standard Roller Chains**

Type	Material
CHE	Steel
CHEM	Lubrication-Free (Steel, Oil Contained Bushings)
CHES	Stainless Steel

(Figure: 4 Links)

RoHS Accessory: Joint Links (as the final links)

■ **Number of Links Configurable** For Technical Information about Chain Drive Mechanism, see P.2305

Type	Nominal	Number of Links (Specify Even Number)	Pitch	h	m	n	T	t	ØD	ØR	H	W	Max. Allowable Tension (kN)	Unit Price		Cutting Charge (+ Unit Price)
														Less than Number of Links per Unit	Number of Links per Unit or More	
CHE (Steel)	15	4~	4.76	3.05	3.85	6.80	0.57	0.57	1.62	2.48	4.3	2.38	0.31			
	25		6.35	3.80	4.80	8.60	0.75	0.75	2.31	3.30	5.8	3.18	0.64			
	35		9.53	5.70	7.10	12.80	1.25	1.25	3.59	5.08	8.8	4.78	2.16			
	40		12.70	8.02	9.53	17.55	1.50	1.50	3.97	7.92	11.7	7.95	3.63			
	50		15.875	10.15	11.60	21.75	2.00	2.00	5.09	10.16	14.6	9.53	6.37			
	60		19.05	12.65	14.15	26.80	2.40	2.40	5.96	11.91	17.5	12.70	8.83			
CHEM (Lubrication-Free)	40	4~	12.70	8.55	10.05	18.60	2.00	1.50	3.97	7.92	11.7	7.95	3.63			
	50		15.875	10.57	12.03	22.60	2.40	2.00	5.09	10.16	14.6	9.53	6.37			
	60		19.05	13.45	14.95	28.40	3.20	2.40	5.96	11.91	17.5	12.70	8.83			
CHES (Stainless Steel)	11	4~	3.75	2.28	3.17	5.44	0.38	0.38	1.57	2.29	3.5	1.83	0.05			
	25		6.35	3.80	4.80	8.60	0.75	0.75	2.31	3.30	5.8	3.18	0.12			
	35		9.53	5.70	7.10	12.80	1.25	1.25	3.59	5.08	8.8	4.78	0.26			
	40		12.70	8.02	9.53	17.55	1.50	1.50	3.97	7.92	11.7	7.95	0.44			
	50		15.875	10.15	11.60	21.75	2.00	2.00	5.09	10.16	14.6	9.53	0.69			
	60		19.05	12.65	14.15	26.80	2.40	2.40	5.96	11.91	17.5	12.70	1.03			

■ **Number of Links Fixed (per Unit)**

Type	Nominal	Number of Links	Number of Links per Unit	Unit Price		
				CHE-U	CHEM-U	CHES-U
CHE CHEM CHES	11	U	134 (Circumference Length 502mm)	-	-	-
	15		210 (Circumference Length 1,000mm)	-	-	-
	25		480 (Circumference Length 3,048mm)	-	-	-
	35		320 (Circumference Length 3,048mm)	-	-	-
	40		240 (Circumference Length 3,048mm)	-	-	-
	50		192 (Circumference Length 3,048mm)	-	-	-
	60		160 (Circumference Length 3,048mm)	-	-	-
	80		120 (Circumference Length 3,048mm)	-	-	-

■ **Application Table of Joint Links and Offset Links**

Chains	Joint Link	Offset Link	Page
CHE (Steel)	JNTC	JNOC	P1593
CHEM (Lubrication-Free)	JMTC	JMOC	
CHES (Stainless Steel)	JNTS	JNOS	

⚠ Select links with the same nominal number.
⚠ Available in each piece qty. for stocks and repair.

■ **Features:** Flat plate allows workpiece to be put directly on plate for conveyance.

■ **Double Pitch Chains**

(Figure: 4 Links)

RoHS Accessory: Joint Links (as the final links) Material: Steel

Type	Nominal	Number of Links (Specify Even Number)	Pitch	h	m	n	T	t	ØD	ØR	H	W	Max. Allowable Tension (kN)	1 Unit Number of Links	Unit Price	Cutting Charge (+ Unit Price)
50	31.75	10.15	11.60	21.75	2.0	2.0	5.09	10.16	14.6	9.53	4.41	96 (Circumference Length 3,048mm)				

■ **Joint Link Application Table**

Chains	Joint Link	Page
CHEW	JNTWC	P1593

⚠ Select links with the same nominal number.
⚠ Available in each piece qty. for stocks and repair.

⚠ Note the followings to order.

When the ordered number of links exceeds the given number of links per unit, the qty. of links per unit and the extra qty. of links are packaged separately.

Ex.) For CHE40-600, 3 separate packages: 240 links x 2 units +120 links

Ordering Example
Part Number - Number of Links
CHE80 - 200
(Unit Type) CHE80 - U

■ **Features:** Are standard chains with the Attachments and allow for various conveyances of small workpieces, depending on the intended usage.

■ **Chains with Attachments Chains**

• **Attachment on One Side Type**

CHEL (Attachment on All Links)

CHET (Attachment on Both Sides Type)

CHEL (Attachment on Every Two Links)

CHET (Attachment on Every Two Links)

CHEL (Attachment on Every Four Links)

CHET (Attachment on Every Four Links)

RoHS Accessory: Joint Links (as the final links) Material: Steel

For Technical Information about Chain Drive Mechanism, see P.2305

Type	Nominal	Shape	* Number of Links	Pitch	Pin		Plate t	Attachment				Max. Allowable Tension (kN)	
					L1	L2		C	X	Y	N		d
CHEL (One Side Type) CHET (Both Sides Type)	40	A (All Links) B (Every Two Links) C (Every Four Links)	4~	12.70	8.07	9.48	1.5	7.9	12.7	17.4	9.5	3.6	2.75
	50		4~	15.875	10.17	11.63	2.0	15.5	15.9	22.3	12.7	5.2	4.41
	60		4~	19.05	12.70	14.20	2.4	19.05	19.05	27.2	15.9	5.2	6.28
	80		4~	25.40	16.15	19.25	3.2	25.4	25.4	35.2	19.1	6.8	10.69

* For the number of links, attachment shape A, B should be specified as the multiple of 2; Shape C as the multiple of 4.

Nominal	Unit Price						Cutting Charge
	Attachment on One Side Type			Attachment on Both Sides Type			
Specified Number of Links	CHEL	CHET	CHET	CHET	CHET	CHET	
	Multiple of 2	Multiple of 2	Multiple of 4	Multiple of 2	Multiple of 2	Multiple of 4	
40	24x Links	17x Links	15x Links	33x Links	24x Links	20x Links	
50	35x Links	26x Links	24x Links	48x Links	35x Links	31x Links	
60	50x Links	39x Links	35x Links	68x Links	50x Links	42x Links	
80	96x Links	75x Links	69x Links	130x Links	95x Links	87x Links	

■ **Number of Links per Unit**

Part Number	Nominal	Number of Links per Unit
CHEL CHET	40	240 (Circumference Length 3,048mm)
	50	192 (Circumference Length 3,048mm)
	60	160 (Circumference Length 3,048mm)
	80	120 (Circumference Length 3,048mm)

■ **Joint Link Application Table**

Chains	Attachment Shape	Joint Link	Page
CHEL (One Side Type)	A,B	JNT-L	P1593
	C	JNTC	
CHET (Both Sides Type)	A,B	JNT-T	
	C	JNTC	

⚠ Select links with the same nominal number.
⚠ Available in each piece qty. for stocks and repair.

⚠ Note the followings to order.

When the ordered number of links exceeds the given number of links per unit, the qty. of links per unit and the extra qty. of links are packaged separately.

<Ex.> For CHEL50A-300, 2 separate packages: 192 links x 1 unit + 108 links

Ordering Example
Part Number - Number of Links
CHEL40A - 200

Joint Links, Offset Links

Standard Sprockets

11B, 15B Series

■ **Features:** Joint Links to connect chains. Available in each piece qty. for stocks and repair. Applicable Chains P.1591

■ **Joint Link**

JNTC (Steel)
JMTC (Lubrication-Free)
JNTS (Stainless Steel)

RoHS

Part Number	Type	Nominal	h	m	n	t	ØD	H	Unit Price		
									JNTC	JMTC	JNTS
JNTC (Steel)	11	2.28	3.17	5.44	0.38	1.57	3.5	-	-	-	
	15	3.05	3.85	6.80	0.57	1.62	4.3	-	-	-	
	25	3.80	4.80	8.80	0.78	2.31	5.2	-	-	-	
	35	5.70	7.10	12.85	1.20	3.60	7.7	-	-	-	
	40	8.02	9.53	17.55	1.15	3.97	11.7	-	-	-	
JMTC (Lubrication-Free)	40	8.02	9.53	17.55	1.15	3.97	11.7	-	-	-	
	50	10.15	11.60	21.75	2.00	5.09	14.6	-	-	-	
	60	12.65	14.15	26.80	2.40	5.96	17.5	-	-	-	
	80	16.07	19.18	35.00	3.20	7.94	21.1	-	-	-	

■ **Offset Link**

JNOC (Steel)
JMOC (Lubrication-Free)
JNOS (Stainless Steel)

RoHS

* Use offset links when an odd number of links are required.

Part Number	Type	Nominal	h	m	n	t	ØD	H	W	Unit Price		
										JNOC	JMOC	JNOS
JNOC (Steel)	35	5.70	7.10	12.80	1.25	3.59	8.8	4.78	-	-	-	
	40	8.02	9.53	17.55	1.50	3.97	11.7	7.95	-	-	-	
	50	10.15	11.60	21.75	2.00	5.09	14.6	9.53	-	-	-	
	60	12.65	14.15	26.80	2.40	5.96	17.5	12.70	-	-	-	
	80	16.07	19.18	35.25	3.20	7.94	23.0	15.88	-	-	-	

■ **Features:** Joint Links made of standard chains with attachment. Applicable chains P.1592

■ **Chains with Attachments Joint Link**

JNT-L (One Side Type)
JNT-T (Both Sides Type)

RoHS

Material: Steel

Part Number	Type	Nominal	Pin		Plate		Attachment				Unit Price	
			L1	L2	t	C	X	Y	N	d	JNT-L	JNT-T
JNT-L (One Side Type)	40	8.07	9.48	1.5	7.9	12.7	17.4	9.5	3.6	-	-	
	50	10.17	11.63	2.0	15.5	15.9	22.3	12.7	5.2	-	-	
JNT-T (Both Sides Type)	60	12.70	14.20	2.4	19.05	19.05	27.2	15.9	5.2	-	-	
	80	16.15	19.25	3.2	25.4	25.4	35.2	19.1	6.8	-	-	

⚠ When ordering 1 - 9 link(s), "Unit Price + Low Quantity Surcharge (Line Item)" is applied.

Ordering Example
Part Number
JNTC60
JNT-L40

■ **Features:** Joint Links for double Pitch Chains. Applicable Chains P.1593

■ **Double Pitch S Type Dedicated Joint Link**

JNTWC

RoHS

Material: Steel

Part Number	Type	Nominal	h	m	n	T	t	ØD	ØR	H	W
	50	10.15	11.60	21.75	2.0	2.0	5.09	10.16	14.6	9.53	

Part Number	Type	Nominal	Unit Price		Volume Discount Rate
			1 - 20 Link(s)	21 - 50 Links	
JNTWC	40				
	50				

Ordering Example
Part Number
JNTWC40

⚠ For orders larger than indicated quantity, please request a quotation.

■ **Features:** Rough shaft bore machining type **S** is also available for alteration.

Type | **Material**
SSP11B | SUS304 Equivalent
SP15B | S45C Equivalent

Accessory: Set Screw (Only for shaft bore specifications **P** and **N**)

Shaft Bore Specs. **S** (Rough Machining) | Shaft Bore Specs. **P** (Round Bore + Tap) | Shaft Bore Specs. **P** (Round Bore + Tap) | Shaft Bore Specs. **N** (New JIS Key + Tap)

11B | 15B

⚠ Set Screw (11B) Number of Teeth 12-18 M3 20-48 M4

⚠ Offset between tooth tip and keyway is ±0.5mm.

RoHS

■ **How to Select Applicable Chains** P.1578

Technical Information about Chain Drive Mechanism P.2305

Type	Part Number		Shaft Bore Specification	Shaft Bore Dia. (D)			Dp	Do	H	L	B	ℓ	Mass (g)	Unit Price									
	Nominal	Hub Type		Number of Teeth	S Specification	P Specifications (H7)								S Specification	P Specification								
						N Specifications (H7)																	
SSP	11	B	S	12	5	5	14.475	16.2	9.4	10.5	1.6	4	6										
				15	5	5	18.02	19.9	13				12										
				16	5	5	19.204	21.1	14				14										
				18	6	6	21.575	23.5	16				18										
				20	8	8	23.949	25.9	19				23										
				24	8	8	28.703	30.7	26				26										
				28	8	8	33.462	35.5	29				29										
				30	8	8	35.842	37.9	30				30										
				34	8	8	40.604	42.7	38				38										
				36	8	8	42.986	45.1	41				41										
				40	8	8	47.751	49.8	47				47										
				48	8	8	57.283	59.4	61				61										
				SP	15	B	S	11	5				5	16.9	19	11	12	2	4	9			
								12	5				5	18.4	20.5	12				10	10		
								13	5				5	19.9	22	14				14			
								14	8				8	21.4	23.5	15				17			
15	8	8	22.91					25	17	22													
16	10	10	24.41					26.5	18	23													
17	10	10	25.92					28	20	32													
18	10	10	27.43					29.5	22	40													
20	10	10	30.44					32.5	24	49													
24	10	10	36.49					39	30	88													
N	12	12	12				39.51	42	33	104													
	15	12	15				42.54	45	37	131													
	16	12	15				45.56	48	39	147													
	30	12	15				50.1	52.5	40	178													
	33	12	15				53.13	55.5	40	182													
	35	12	15																				

⚠ Shaft bore tolerance of S/P5 to S/P6 is H8.

Shaft Bore Machining Dimension Table (15B)

Shaft Bore Dia. D	Keyway b×xtz	Set Screw M
5, 6	-	3
8	-	4
10	3×1.4	4
12	4×1.8	5
15	5×2.3	6
16	5×2.3	6

Ordering Example
Part Number - Shaft Bore Specs. - Shaft Bore Dia.
SSP11B15 - **P** - **6**
SP15B20 - **S** - **10**