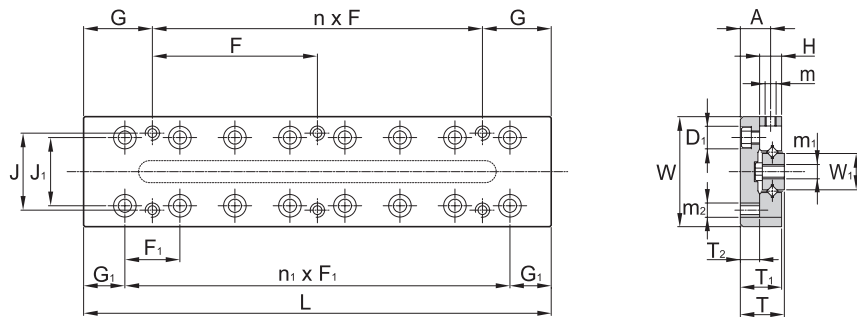


Cross Roller Guide

Cross Roller Table SCVRT Type

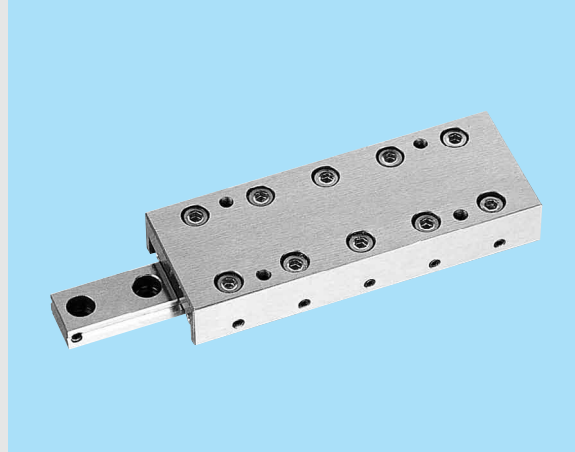
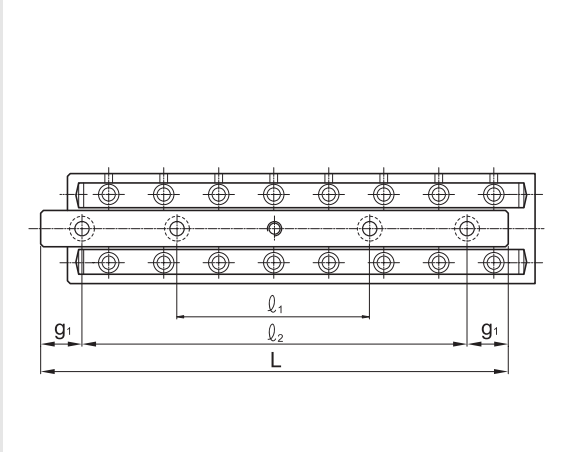
SCVRT1 Miniature Type (Base Tapped-hole)



Model No.	Max Stroke	Major Dimensions				Top Dimensions							
		$W \pm 0.1$	$T \pm 0.1$	L	Mass [g]	J	$n \times F$	G	m_2	$n_1 \times F_1$	J1	D1	G1
SCVRT 1025	12	20	8	25	23	14	1x18	3.5	M2.6	1x10	12.4	4.1	7.5
SCVRT 1035	18			35	32		1x28	3.5		2x10			
SCVRT 1045	25			45	42		1x20	12.5		3x10			
SCVRT 1055	32			55	52		1x30	12.5		4x10			
SCVRT 1065	40			65	62		2x20	12.5		5x10			
SCVRT 1075	45			75	72		1x30	22.5		6x10			
SCVRT 1085	50			85	82		2x30	12.5		7x10			

Cross Roller Guide

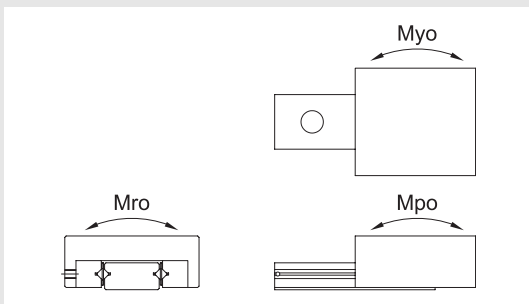
Cross Roller Table SCVRT Type



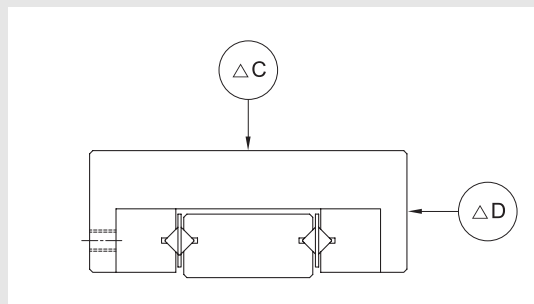
(Unit : mm)

End Dimensions						Base Dimensions mounting-hole position						No. of Rollers	Basic load rating [kN]		Static permissible moment [N.m]			Accuracy [μm]	
T1	T2	H	W1	A	m	m1	D	h	$\varnothing 1$	$\varnothing 2$	g1	Z	C	Co	Mpo	Myo	Mro	ΔC	ΔD
7.5	3.5	4	6.7	5.5	M2	2.5	4.1	2.2	-	18	3.5	5	0.28	0.27	0.75	0.46	0.69	2	4
									-	25	5	7	0.38	0.41	1.23	0.85	1.03		
									25	38	3.5	10	0.56	0.69	2.18	1.67	1.72		
									29	48	3.5	12	0.65	0.82	2.97	2.35	2.06		
									31	55	5	14	0.73	0.96	3.87	3.17	2.40		
									35	65	5	18	0.87	1.27	6.05	5.16	3.19		
40	75	5	20	0.94	1.37	7.32	6.37	3.43	5										

* Static permissible moment

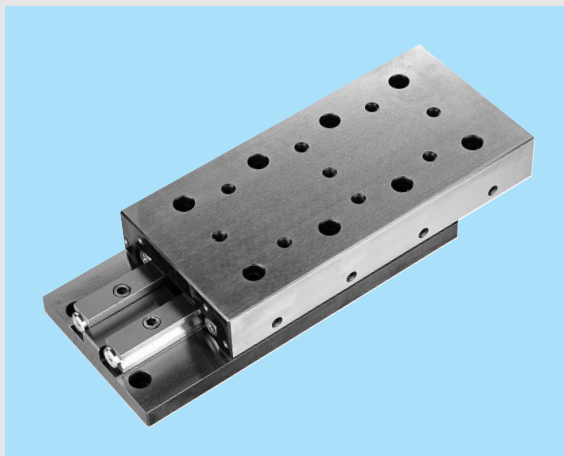
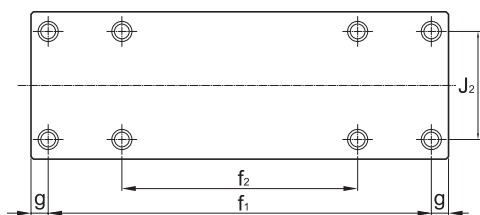


* Accuracy



Cross Roller Guide

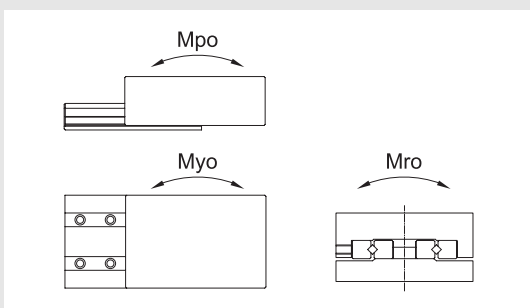
Cross Roller Table SCVRU Type



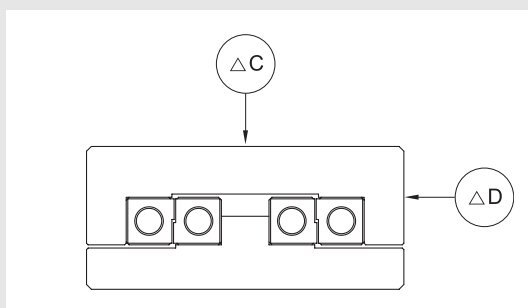
(Unit : mm)

End Dimensions							Base Dimensions mounting-hole position				No. of Rollers	Basic load rating [kN]		Static permissible moment [N.m]			Accuracy [μm]		
K	d	D	h	D1	m1	A	m2	J2	f1	f2	g	Z	C	Co	Mpo	Myo	Mro	ΔC	ΔD
6.5	2.55	4.1	2.5	4.1	M2	9	M2	22	18	-	3.5	5	0.28	0.27	0.75	0.46	1.24	2	4
									28	-		7	0.38	0.41	1.23	0.85	1.85		
									38	-		10	0.56	0.69	2.18	1.67	3.09		
									48	28		12	0.65	0.82	2.97	2.35	3.71		
									58	38		14	0.73	0.96	3.87	3.17	4.33		
									68	48		18	0.87	1.27	6.05	5.16	5.74		
									78	58		20	0.94	1.37	7.32	6.34	6.18		

* Static permissible moment



* Accuracy



Cross Roller Tables

Counterbored Holes / Tapped Holes

Part numbers have been changed since the 2010 catalog. Significant 20% price reduction (compared to '09 products).

Counterbored Holes



RoHS

Tapped Holes

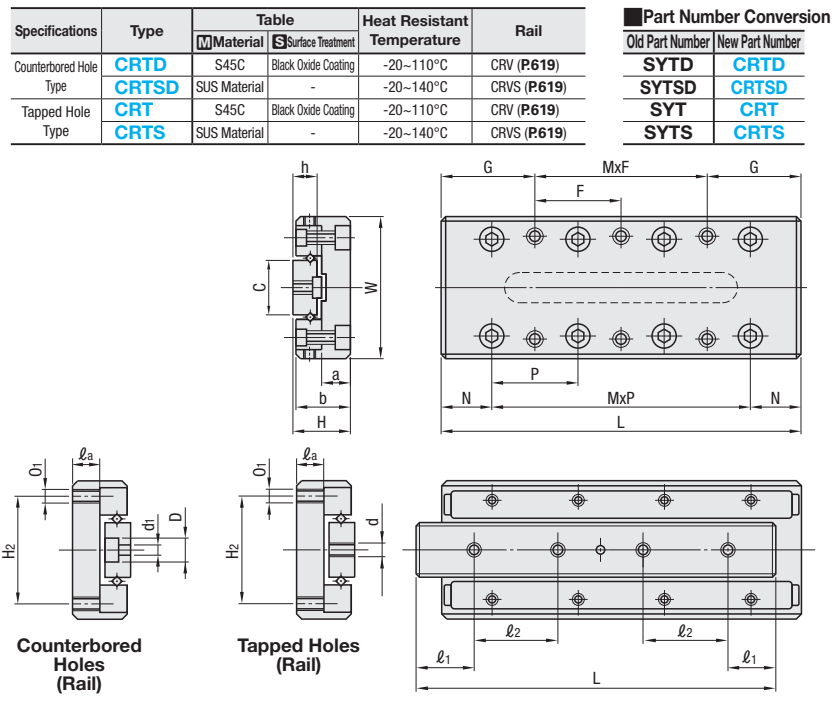


RoHS

Specifications such as installation dimensions and accuracies are the same as those of products with old part numbers.

Handle with Care

Cross Roller Tables are extremely vulnerable to impacts. Dropping it or applying extra force will impair its sliding performance. Please handle it with utmost care.



Part Number Conversion

Old Part Number	New Part Number
SYTD	CRTD
SYTSD	CRTSD
SYT	CRT
SYTS	CRTS

Cross Roller Tables

Part numbers have been changed since the 2010 catalog. Significant 20% price reduction (compared to '09 products).

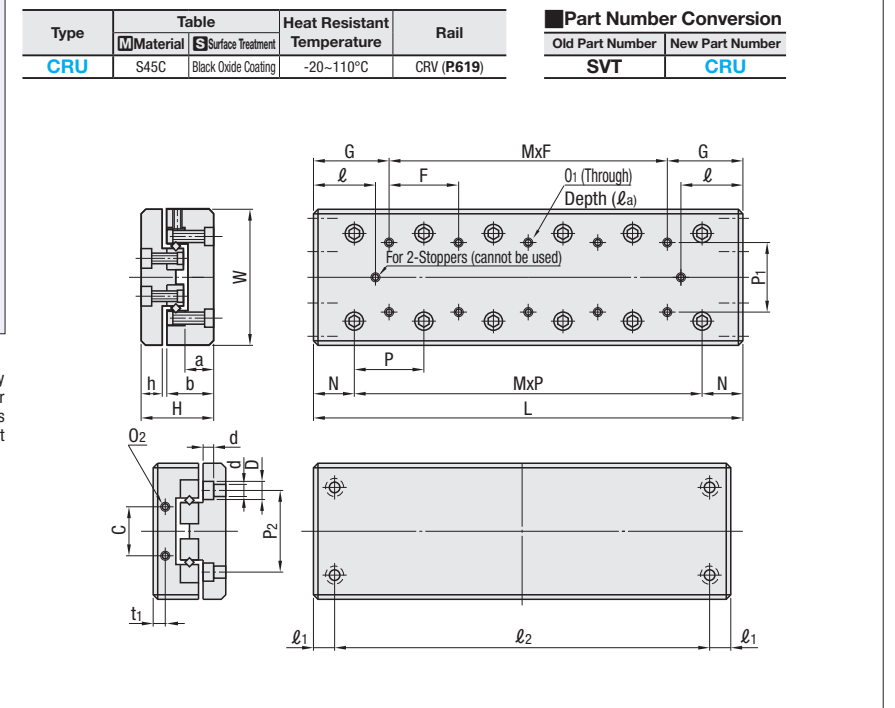


RoHS

Specifications such as installation dimensions and accuracies are the same as those of products with old part numbers.

Handle with Care

Cross Roller Tables are extremely vulnerable to impacts. Dropping it or applying extra force will impair its sliding performance. Please handle it with utmost care.



Part Number Conversion

Old Part Number	New Part Number
SVT	CRU

Part Number	Outline Dimensions			Table Mounting Hole Dimensions				Table Top Dimensions		Side Dimensions		Rail Mounting Hole Dimensions																	
	Type	No.	Stroke (Reciprocating Motion)	H	W	L	G	F	MxF	H ₂	O ₁	l _a	N	P	MxP	a	b	h	C	d ₁	D	l ₁	l ₂	Mounting Hole Qty.	d	l ₁	l ₂	Mounting Hole Qty.	
Counterbored Holes CRTD CRTSD Tapped Holes CRT CRTS	1025	12	12	8±0.1	20±0.1	25	3.5	18	1x18	14	M2.6	3	7.5	10	1x10	3.5	7.5	4	6.6	2.5	4.1	3.5	-	2	M2.6	5	7.5	3	18
	1035	18	18	8±0.1	20±0.1	35	3.5	28	1x28	14	M2.6	3	7.5	10	2x10	3.5	7.5	4	6.6	2.5	4.1	5	-	2	M2.6	7.5	10	3	28
	1045	25	25	12±0.1	30±0.1	45	12.5	20	1x20	22	M3	5	10	15	3x10	5.5	11.5	6	12	3.5	6	5	6.5	4	M3	10	15	4	38
	2035	18	18	12±0.1	30±0.1	35	3.5	28	1x28	22	M3	5	10	15	1x15	5.5	11.5	6	12	3.5	6	5	-	2	M3	7.5	20	2	25
	2050	30	30	12±0.1	30±0.1	50	3.5	43	1x43	22	M3	5	10	15	2x15	5.5	11.5	6	12	3.5	6	7.5	-	2	M3	10	15	3	40
	2065	40	40	16±0.1	40±0.1	65	17.5	30	1x30	30	M4	7	15	25	3x15	7.5	15.5	8	16	4.5	7.5	5	11	4	M4	10	15	4	55
	*3055	30	30	16±0.1	40±0.1	55	7.5	40	1x40	30	M4	7	15	25	1x25	7.5	15.5	8	16	4.5	7.5	7.5	-	2	M4	10	35	2	60
	*3080	45	45	16±0.1	40±0.1	80	7.5	65	1x65	30	M4	7	15	25	2x25	7.5	15.5	8	16	4.5	7.5	6	12.5	4	M4	15	25	3	60

*1 Depending on some production lot, the dimension may be 10.5.
*2 Depending on some production lot, the dimension may be 14.5.

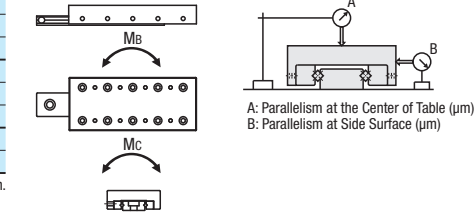
Ordering Example Part Number CRT3055

No.	CRT, CRTD		CRTS, CRTSD	
	Unit Price	Volume Discount Rate	Unit Price	Volume Discount Rate
1025	1 ~ 9 set(s)	10 sets ~	1 ~ 9 set(s)	10 sets ~
1035				
1045				
2035				
2050				
2065				
3055				
3080				

For orders larger than indicated quantity, please request a quotation.

No.	Allowable Static Moment			Basic Load Rating		Precision	
	MA N·m	MB N·m	MC N·m	C (Dynamic) N	Co (Static) N	Deflection A	Deflection B
1025	1.79	1.79	1.79	465	478	2	4
1035	4.18	4.18	3.59	807	956		
1045	5.38	5.38	4.48	962	1195		
2035	7.04	7.04	7.63	1101	1174		
2050	11.7	11.74	11.4	1521	1761		
2065	16.4	16.4	15.3	1908	2348		
3055	33.8	33.8	35.3	3617	4062		
3080	60.9	60.9	58.9	5409	6770		

kgf=Nx0.101972



Part Number	Outline Dimensions			Table Mounting Hole Dimensions				Table Top Dimensions		Side Dimensions		Rail Mounting Hole Dimensions														
	Type	No.	Stroke (Reciprocating Motion)	H	W	L	G	MxF	P ₁	O ₁	l _a	N	P	MxP	l	a	b	h	C	t ₁	O ₂	P ₂	d	D	l ₁	l ₂
CRU	1025	12	12	17±0.1	30 ^{-0.2} _{-0.4}	25	3.5	-	10	M2	4	7.5	10	1x10	2.5	7	11	5.5	12	2.5	M2	22	2.5	4.5	3.5	18
	1035	18	18	17±0.1	30 ^{-0.2} _{-0.4}	35	12.5	1x10	10	M2	4	7.5	10	2x10	4.5	7	11	5.5	12	2.5	M2	22	2.5	4.5	3.5	28
	1045	25	25	12±0.1	30 ^{-0.2} _{-0.4}	45	12.5	2x10	10	M2	4	7.5	10	3x10	6	7	11	5.5	12	2.5	M2	22	2.5	4.5	3.5	38
	2035	18	18	12±0.1	30 ^{-0.2} _{-0.4}	35	3.5	-	15	M3	6	10	15	1x15	3	8	14	6.5	16	3.4	M2	30	3.5	6.5	5	25
	2050	30	30	12±0.1	30 ^{-0.2} _{-0.4}	50	17.5	1x15	15	M3	6	10	15	2x15	4.5	8	14	6.5	16	3.4	M2	30	3.5	6.5	5	40
	2065	40	40	16±0.1	30 ^{-0.2} _{-0.4}	65	17.5	2x15	15	M3	6	10	15	3x15	7	8	14	6.5	16	3.4	M2	30	3.5	6.5	5	55
	3055	30	30	16±0.1	30 ^{-0.2} _{-0.4}	55	17.5	-	25	M4	8	15	25	1x25	5.5	10.5	18.5	9	40	5.5	M3	40	4.5	8	10	35
	3080	45	45	16±0.1	30 ^{-0.2} _{-0.4}	80	27.5	1x25	25	M4	8	15	25	2x25	10.5	10.5	18.5	9	40	5.5	M3	40	4.5	8	10	60

Ordering Example Part Number CRU3055

No.	CRU	
	Unit Price	Volume Discount Rate
1025	1 ~ 9 set(s)	10 sets ~
1035		
1045		
2035		
2050		
2065		
3055		
3080		

For orders larger than indicated quantity, please request a quotation.

No.	Allowable Static Moment			Basic Load Rating		Precision	
	MA N·m	MB N·m	MC N·m	C (Dynamic) N	Co (Static) N	Deflection A	Deflection B
1025	1.79	1.79	3.23	465	478	2	4
1035	4.18	4.18	6.46	807	956		
1045	5.38	5.38	8.07	962	1195		
2035	7.04	7.04	10.6	1101	1174		
2050	11.7	11.74	15.8	1521	1761		
2065	16.4	16.4	21.1	1908	2348		
3055	33.8	33.8	56.9	3617	4062		
3080	60.9	60.9	94.8	5409	6770		

kgf=Nx0.101972

