

Lead Screw

For Lead Screw Support Unit Type



A dedicated lead screw configured for bearings, stopper clamp, and a position indicator and a handle. Ordering can be completed only with specifying D, L, and S dimensions.

Type		Material	Surface Treatment
Right-Hand Thread	Left-Hand Thread		
MTWK	MTWLK	S45C	Black Oxide
MTWBK	MTWBLK		
RMTWK	RMTWLK	SUS303	Low Temperature Black Chrome Plating
MTSWK	MTSWLK		

RoHS

Right-Hand Thread / Left-Hand Thread *When D=20, 22, and 25

R	e Tolerance	m+0.14 0
8	5	+0.075 0
10	9.6	0 -0.09
12	11.5	0 -0.11
15	14.3	0 -0.11

Part Number	1mm Increment		F	R	B	T	Q	A	M x Pitch	E	D	Pitch P	
	Type	D											L
(Right-Hand Thread) MTWK	12	80~1000	2≤S≤80	10	8	7	26	8	11	8x1.0	6	12	2
(Left-Hand Thread) MTWLK	14												
MTWBK	16	100~1200	2≤S≤95	12	12	8	29	12	12	12x1.0	10	16	3
MTWBLK	18												
RMTWK	20	150~1200	2≤S≤100	12	12	8	29	12	12	12x1.0	10	18	4
RMTWLK	22												
MTSWK	25			12	15	9	34	15	14	15x1.0	12	20	4
MTSWLK				12	15	9	34	15	14	15x1.0	12	22	5
				12	15	9	34	15	14	15x1.0	12	25	5

⚠ D dimension 22 is not available for MTSWK.

⚠ D dimensions 22 and 25 are not available for MTSWLK.

⚠ Low Temperature Black Chrome Plated Products: L≤1000

Ordering Part Number - L - S
 Example MTWK20 - 800 - S90

Alterations Part Number - L - S - (NAR, RC, FE, SE, ME, MR, ZE, KE)
 Example MTWK20 - 800 - S90 - KE0 - C30

Alterations	No Retaining Ring Groove on Support Side Shaft End	No Machining on Support Side	Flat Machining	Wrench Flats	Coarse Tapping	Square Chamfering	Keyway
Code	NAR (R part)	RC (R part)	FE (E part)	SE (E part)	ME (E part) MR (E Side)	ZE (E part)	KE (E part)
Spec.	No retaining ring machining performed on the R part for the support side end. Ordering Code NAR	No machining performed on the R part. Ordering Code RC ⊗ Combination with other R part alteration is not available.	FE,FW,FY=0.5mm increment FE=Applied on E Ordering Code FE5-FW10-FY1 ⊕ FY≤1.0 ⊕ FE=0, or FE≥2 ⊕ 3≤FW≤20	SE,SW,SY=1mm increment SE=Applied on E part Ordering Code SE3-SW10-SY7 ⊕ SE≥E-2 ⊕ 3≤SY≤20 ⊕ SE=0, or FE≥2	ME=Applied on E part MR=Applied on R part and left end face Ordering Code ME6 E R D ME MR Selection Range 6 3 8 3, 4 10 3, 4, 5 12 3, 4, 5, 6 14-15 3, 4, 5, 6, 8 16-18 5, 6, 8, 10 20-25 5, 6, 8, 10, 12 ⊗ When combining with another alteration, do not specify this alteration in such a way that the shaft end thickness becomes less than 1mm. Other Alterations ⊕ 1mm or more is required. Tapped Hole	A=1mm increment ZE=Applied on E part Ordering Code ZE12-W10-A8 ⊕ Can be combined with Tapped Hole machining only on the same shaft. (See P.787 for machining conditions.) ⊕ 5≤A≤20 ⊕ ZE=E Specified	KE, C=1mm increment ⊕ C≤60 ⊕ KE≥2 ⊕ S-C-KE≥2 ⊕ When KE=0, keyway R will be eliminated on the shaft end side. KE=Applied on E part Ordering Code KE8-C10 ⊕ Applicable to D dimension 16 or more When a new keyway is added, the O.D. tolerance for the E part is always (-0.05). ⊕ Specify the C dimension not to be below b1. Keyway Dimension Applicable Shaft End Dia. E b1 Tolerance t1 Tolerance r1 10 3 -0.004 -0.029 1.8 +0.1 0 0.08 -0.16 12 4 0 -0.030 2.5

- ⚠ Specify an alteration position to be 2mm or more away from the stepped part. (For details, see P.787.)
- ⚠ Do not specify multiple alterations in such a way that they overlap with each other in the rotating direction on the same shaft. (For details, see P.787.)
- ⚠ When flat machining, wrench flats, square chamfering and keyway alterations are combined with each other, their orientations will be random. (For details, see P.787.)
- ⚠ When adding multiple alterations, there must be 2mm or more clearance between each feature. (For details, see P.787.)

No Surface Treatment

Part Number	Type	D	Unit Price				
			Min. L ~ 200	L201~400	L401~600	L601~800	L801~1000
MTWK MTWLK		12					
		14					
		16					
		18					
		20					
		22					

Black Oxide

Part Number	Type	D	Unit Price				
			Min. L ~ 200	L201~400	L401~600	L601~800	L801~1000
MTWBK MTWBLK		12					
		14					
		16					
		18					
		20					
		22					

Right-Hand Thread / Left-Hand Thread, Stainless Steel

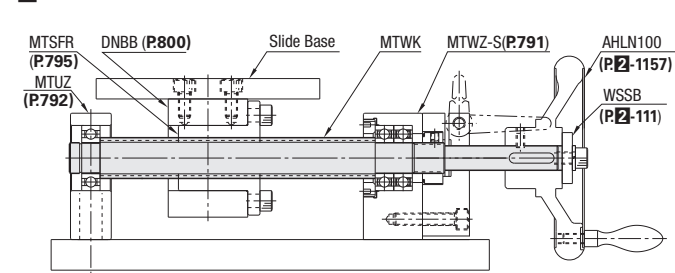
Part Number	Type	D	Unit Price				
			Min. L ~ 200	L201~400	L401~600	L601~800	L801~1000
MTSWK MTSWLK		12					
		14					
		16					
		18					
		20					
		22					

Low Temperature Black Chrome Plated Products

Part Number	Type	D	Unit Price				
			Min. L ~ 200	L201~400	L401~600	L601~800	L801~1000
RMTWK RMTWLK		12					
		14					
		16					
		18					
		20					
		22					



Slide Base Transfer Unit



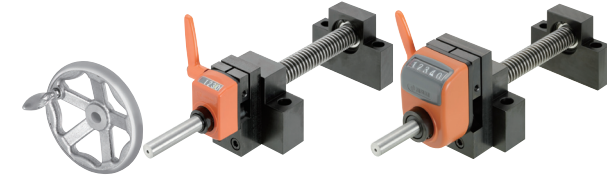
Recommended Configuration

This unit allows the slide base for workpiece/fixture loading to be position-adjusted by manually rotating its lead screws manually. A dedicated lead screw, bearing unit and stopper clamp are combined in a set. P.791-794
 The unit can support radial and axial loads, and can be constructed more economically in a compact manner. Also, position indicators can be easily mounted.

Combined Parts Details

*MTUZ	Lead Screw Support Unit - Support Side
MTSFR	Lead Screw Nut - Flanged
DNBB	Nut Bracket for Lead Screw
MTWK	Lead Screw - For Support Units
MTWZ-S	Lead Screw Support Unit - Stop Plate Set
AHLN100	Five Spoked Handwheel
WSSB	Metal Washer

* For MTUZ, purchasing it in combination with MTWZ in set is more economical than when it is purchased as the separate unit. Details P.791



Lead Screw

Both Ends Stepped

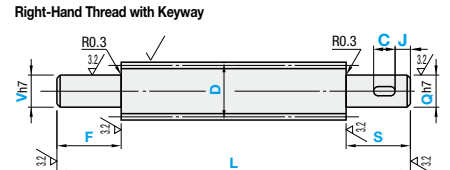
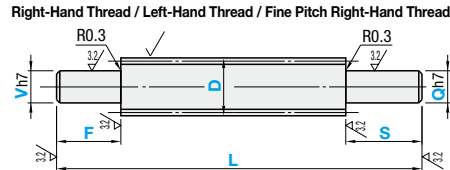
Generally used product type.



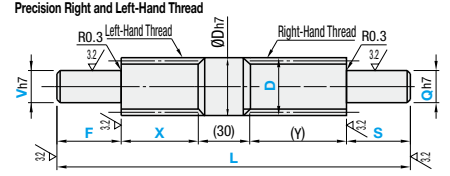
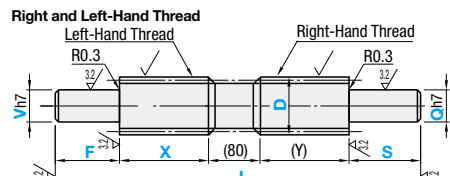
Type						Material	Surface Treatment
Right-Hand Thread	Right-Hand Thread with Keyway	Fine Pitch Right-Hand Thread	Left-Hand Thread	Right and Left-Hand Thread	Precision Right and Left-Hand Thread		
MTSRW	MTSRV	MTXRW	MTSLW	MTSWW	MTSYW	S45C	Black Oxide Low Temperature Black Chrome Plating
MTSBRW	MTSBRV	MTXBRW	MTSBLW	MTSBWW	MTSBYW		
RMTSRW	RMTSRV	RMTXBRW	RMTSLW	RMTSBBW	RMTSBBYW		
MTSTRW	-	-	MTSTLW	-	-	SUS303	-

Single Pitch Error ... ±0.02mm · Accumulated Pitch Error ... ±0.15/300mm

$$6.3 / (\sqrt{3.2})$$



Keyway machining details conform to Shaft Keyway Dimensions shown on the right-hand page.



Incomplete Threaded Portion of Right and Left-Hand Thread Type
Left-Hand Thread Incomplete Threaded Portion (80mm) Right-Hand Thread
The center between the right-hand thread and the left-hand thread is an incomplete threaded portion (approx. 80mm) resulting from rolling machining. This portion, including the shaft part enclosed with ϕ , is not useable.
When being required to use the center between the right-hand thread and the left-hand thread as the shaft, select the Precision Right and Left-Hand Thread type.

Incomplete threaded portion near the center (80mm) is not useable. ϕ D ϕ h7-30mm part includes incomplete thread portion by about 1.5 pitches at both ends (in total about 3 pitches).

Part Number	D	1mm Increment		V / Q Selection	Right and Left-Hand Thread / Precision Right and Left-Hand Thread		D	Pitch P
		Type	L		F, S	X 1mm Increment		
(Right-Hand Thread) MTSRW MTSBRW RMTSRW MTSTRW (Stainless Steel)	*8 10 12 14 16	50-500 80-1000 100-1200		6 6 7 6 7 8 9 8 9 10 9 10 12 9 10 12 10 12 14 15 10 12 14 15 12 14 15 16 17 14 15 16 17 20 14 15 16 17 20 25 17 20 25 20 25 30 25 30 35 40			8 10 12 14 16 18 20 22 25 28 32 36 40 50	1.5 2 3 4 5 6 8
(Left-Hand Thread) MTSLW MTSBLW RMTSLW MTSTLW (Stainless Steel)	16 18 20 22 25 28 32 36 40 50	100-1200 150-1200 200-1200	2≤F≤Vx7 2≤S≤Qx7 When V and Q are 6-9, 2≤F≤Vx5 2≤S≤Qx5					
(Right and Left-Hand Thread) MTSWW MTSBBW RMTSWW MTSYW MTSBBYW	10 12 14 16 18 20 22 25 28 32 36 40 50							

For Precision Right and Left-Hand Thread, D dimension 14, 16, 20, 25, 28 and 32 are available. When combined with position indicators, the standard Q diameters are 8 ~ 20. P.811, 812
D dimension 22, 36, 40 and 50 are not applicable to Stainless Steel. D dimension 25, 28 and 32 are applicable to Right-Hand Thread only.

Part Number	D	1mm Increment		V / Q Selection	1mm Increment		D	Pitch P
		Type	L		F, S	C		
MTSRV MTSBRV RMTSRV (Stainless Steel)	12 14 16 18 20 22 25 28 32 36 40 50	80-1000 100-1200 150-1200 200-1200	2≤F≤Vx7 2≤S≤Qx7 When Q, V≤9, F, S are 5x or less of Q, V.	7 8 9 8 9 10 9 10 12 9 10 12 10 12 14 15 10 12 14 15 12 14 15 16 17 14 15 16 17 20 17 20 25 20 25 30 25 30 35 40	C≤60 S-C-J≥2	J≥2 or J=0 When J=0, keyway R will be eliminated on the shaft end side.	12 14 16 18 20 22 25 28 32 36 40 50	2 3 4 5 6 8

When combined with position indicators, the standard Q diameters are 8 ~ 20. P.811, 812

Part Number	D	1mm Increment		V / Q Selection	D	Pitch P
		Type	L			
MTXRW MTXBRW	16 20	100-1000 150-1000	2≤F≤Vx7 2≤S≤Qx7 When Q, V≤9, F, S are 5x or less of Q, V.	9 10 12 10 12 14 15	16 20	2 2

Nuts for Fine Pitch Right-Hand Thread P.796

Part Number	L	F	V	S	Q	C	J
Ordering Example	282	F16	V10	S14	Q10	-	-
Part Number	L	F	V	S	Q	C	X
Ordering Example	583	F20	V15	S30	Q15	-	X100

Unit price for the product is price in the table multiplied by price multiplier.
Price in the table x Price Multiplier = Unit Price

Part Number	D	Unit Price					
		Min. L - 200	L201-400	L401-600	L601-800	L801-1000	L1001-1200
MTSRW	8-18	-	-	-	-	-	-
MTSBRW	18-22	-	-	-	-	-	-
MTSLW	22-25	-	-	-	-	-	-
MTSBLW	25-32	-	-	-	-	-	-

Part Number	D	Unit Price					
		Min. L - 200	L201-400	L401-600	L601-800	L801-1000	L1001-1200
MTSWW	10-20	-	-	-	-	-	-
MTSBBW	22-25	-	-	-	-	-	-
MTSTRW	25-32	-	-	-	-	-	-

Part Number	D	Unit Price					
		Min. L - 200	L201-400	L401-600	L601-800	L801-1000	L1001-1200
MTSYW	14-16	-	-	-	-	-	-
MTSBBYW	20-25	-	-	-	-	-	-

Part Number	D	Unit Price			
		Min. L - 200	L201-400	L401-600	L801-1000
MTXRW	16-20	-	-	-	-
MTXBRW	16-20	-	-	-	-

Alterations Part Number L F V S Q C J (AC, SC, MC - etc) MTSRW16 - 282 - F16 - V10 - S14 - Q10 - AC13.3 Only AC, SC, MC, MQ and ZC are applicable to Right-Hand Thread with Keyway.

Alterations	Flat Machining	Retaining Ring Groove	Wrench Flats	Coarse Tapping	Threaded	Square Chamfering	Keyway
Code	FV (V part) FQ (Q part)	AC (V part) AQ (Q part)	SC (V part) SQ (Q part)	MC (V part) MQ (Q part)	BV (V part) BC (Q part)	ZC (V part) ZQ (Q part)	KV (V part) KC (Q part)
Spec.	FV, FQ, FW, FY = 0.5mm Increment FV = Applied on V part FQ = Applied on Q part FV(FQ) = 0, or FV(FQ) ≥ 2 FY ≤ 1.0 FY ≤ 2.0 FY ≤ 3.0	AC, AQ = 0.1mm Increment AC, AQ = F(S) - M - n For the m, n value, see the table below. (For the m value, consider the tolerance.) Ordering Code AC13.3 Applied on AC = V part and AQ = Q part. V, Q e Tolerance m=0.14, n=0.14 6 4 +0.075 0.7 n±1.2 7 5 0 0.9 8 5 0 0.9 9 6 0 0.9 10 9.6 0.09 12 11.5 14 13.4 15 14.3 16 15.2 17 16.2 20 19 25 23.9 30 28.6 35 33 40 38	SC, SQ, SW, SY = 1mm Increment Applied on SC = V part Applied on SQ = Q part SC(SQ) = 0, or SC(SQ) ≥ 2 When Q(V) < 15, then SW > Q(V) - 2 When 15 ≤ Q(V) ≤ 25, SW = Q(V) - 3 When 30 ≤ Q(V), SW = Q(V) - 5 3 ≤ SY ≤ 20	MC = Applied on V part MQ = Applied on Q part Ordering Code MC24 V-Q MC, MQ (Selection Range) 6 3 7 3 8 3 9 3 10 3 12 3 14 15 3 16 17 3 20 3 25 30 3 35 3 40 3 10 3 12 3 14 15 3 16 17 3 20 3 25 30 3 35 3 40 3	BV, BC = Mx3 BV, BC = Pitchx3 BV, BC = FxS - Pitchx3 Ordering Code BC20 BV = Applied on V part BC = Applied on Q part ZC = V, ZQ = Q W 1mm Increment 5 = A-20 ZC = V, ZQ = Q Specified machining only on the same shaft. (See P.787 for machining conditions.) V, Q MxPitch 6 M6x0.75 8 M8x1.0 10 M10x1.0 12 M12x1.0 14 M14x1.0 15 M15x1.0 17 M17x1.0 20 M20x1.0 25 M25x1.5 30 M30x1.5 35 M35x1.5 40 M40x1.5	KV, KC = 1mm Increment Ordering Code KC8-C10 KV = Applied on V part KC = Applied on Q part KV, KC = Applied to either V or Q. Specify the C dimension not to be below b1. Keyway Dimension Applicable Shaft End Dia. V, Q b1 Dimension (N9) t1 Dimension r1 6 7 2 -0.004 1.2 8 10 3 -0.029 1.8 10 12 4 0 2.5 +0.1 0 12 14 5 0 -0.030 3.0 14 17 5 0 4.0 20 6 0 -0.036 5.0 +0.2 0 25 30 8 0 4.0 35 10 -0.043 5.0 40 12 0 -0.043 5.0	

Specify an alteration position to be 2mm or more away from the stepped part. (For details, see P.787)
Do not specify multiple alterations in such a way that they overlap with each other in the rotating direction on the same shaft. (For details, see P.787)
When flat machining, wrench flats, square chamfering and keyway alterations are combined with each other, their orientations will be random. (For details, see P.787.)
When adding multiple alterations, there must be 2mm or more clearance between each feature. (For details, see P.787)

Lead Screw

One End Stepped / One End Double Stepped

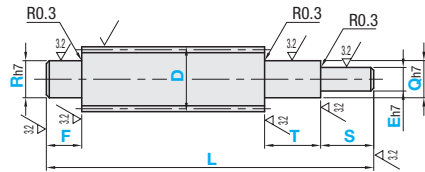
Lead screws that are easy to combine with MISUMI Support Units in P.791~792.



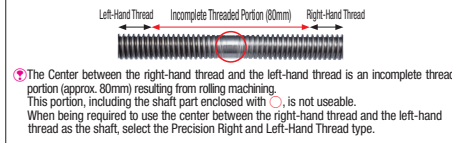
Type				Material	Surface Treatment	
Right-Hand Thread	Left-Hand Thread	Right and Left-Hand Thread	Precision Right and Left-Hand Thread			
MTSRK	MTSLK	MTSWKA/B	MTSYKA/B	S45C	Black Oxide	
MTSBRK	MTSBLK	MTSBWKA/B	MTSBYKA/B			
RMTSRK	RMTSLK	RMTSWKA/B	-			Low Temperature Black Chrome Plating
MTSTRK	MTSTLK	-	-			SUS303

Single Pitch Error ... ±0.02mm - Accumulated Pitch Error ... ±0.15/300mm
 Type A or B are available for Right and Left-Hand Thread and Precision Right and Left-Hand Thread.

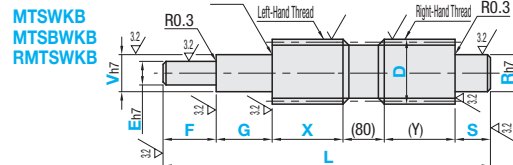
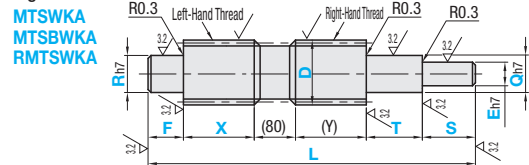
Right-Hand Thread / Left-Hand Thread



Incomplete Threaded Portion of Right and Left-Hand Thread Type

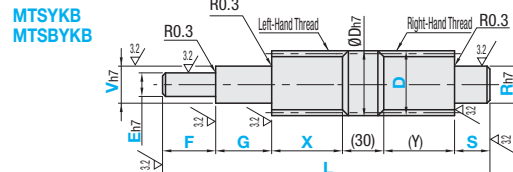
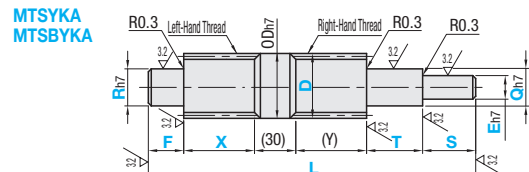


Right and Left-Hand Thread



Incomplete threaded portion near the center (80mm) is not

Precision Right and Left-Hand Thread



ØDh7-30mm part includes incomplete thread portion by about 1.5 pitches at both ends (in total about 3 pitches).

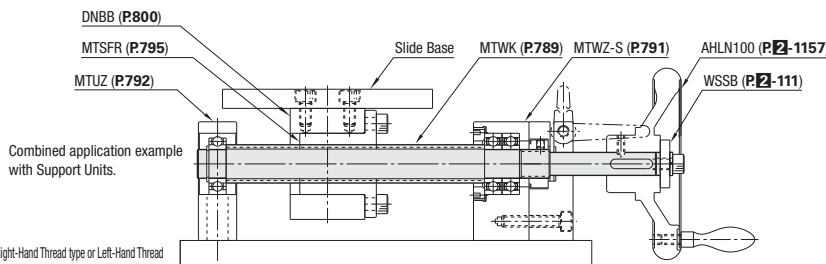
Part Number	D	1mm Increment		V / Q / R	E	Right and Left-Hand Thread / Precision Right and Left-Hand Thread		D	Pitch P
		L	F, G, T, S			X 1mm Increment	1mm Increment		
(Right-Hand Thread) MTSRK MTSBRK RMTSRK MTSTRK (Stainless Steel)	12 14 16 18	80~1000		7 8 9				12 14 16 18	2 3 4
(Left-Hand Thread) MTSLK MTSBLK RMTSLK MTSTLK (Stainless Steel)	20 22 25	150~1200	2<F<E-Rx7 2<G<Vx7 2<S<E-Rx7 2<T<Qx7	10 12 14 15	Q/2<E<Q-1 V/2<E<V-1			20 22 25	4 5
(Right and Left-Hand Thread) MTSWKA/B MTSBWKA/B RMTSWKA/B (Precision Right and Left-Hand Thread)	28 32 36 40 50	200~1200	When Q, V, R, and E<9 F, G, T, S will be 5x or less of Q, V, R, E.	14 15 16 17 20 17 20 25				28 32 36 40 50	6 8

For Precision Right and Left-Hand Thread, D dimension 14, 16, 20, 25, 28 and 32 are available. When combined with the position indicators, Q and V standard dimensions will be 8 ~ 20. P.811, 812
 D dimension 22, 36, 40 and 50 are not applicable to Stainless Steel. D dimension 25, 28 and 32 are applicable to Right-Hand Thread only.



Example

Slide Base Transfer Unit



MTUZ	Lead Screw Support Unit - Support Side
MTSFR	Lead Screw Nut - Flanged
DNBB	Nut Bracket for Lead Screw
MTWK	Lead Screw - For Support Units
MTWZ-S	Lead Screw Support Units Stop Plate Set
AHLN100	Five Spoked Handwheel
WSSB	Metal Washer

When considering adopting support units in combination either with Right-Hand Thread type or Left-Hand Thread type lead screws, ordering of Lead Screws - For Lead Screw Support Unit Type in P.789 is recommended.



Part Number	L	F	R	T	Q	S	E	X
MTSRK16	456	F37	R10	T20	Q12	S10	E9	X10
MTSWKA16	456	F37	R10	T20	Q12	S10	E9	X10
Part Number	L	F	E	G	V	S	R	X
MTSBWKB20	582	F10	E10	G15	V12	S25	R15	X200

Unit price for the product is price in the table multiplied by price multiplier.
 Price in the table x Price Multiplier = Unit Price

Right-Hand Thread / Left-Hand Thread

Part Number	D	Unit Price					
		Min. L - 200	L201-400	L401-600	L601-800	L801-1000	L1001-1200
MTSRK Price in the Table	12						
	14						
	16						
	18						
MTSBRK Price in the Table x1.1	20						
	22						
	25						
	28						
MTSLK Price in the Table x1.02	32						
	36						
	40						
	50						

Right and Left-Hand Thread

Part Number	D	Unit Price					
		Min. L - 200	L201-400	L401-600	L601-800	L801-1000	L1001-1200
MTSWKA/B Price in the Table	12						
	14						
	16						
	18						
MTSBWKA/B Price in the Table x1.12	20						
	22						
	25						
	28						
	32						
	36						
	40						
	50						

Right-Hand Thread / Left-Hand Thread, Stainless Steel

Part Number	D	Unit Price					
		Min. L - 200	L201-400	L401-600	L601-800	L801-1000	L1001-1200
MTSTRK MTSTLK	12						
	14						
	16						
	18						
MTSTRK	20						
	25						
	28						
	32						

Low Temperature Black Chrome Plated Products - Right-Hand Thread / Left-Hand Thread

Part Number	D	Unit Price					
		Min. L - 200	L201-400	L401-600	L601-800	L801-1000	L1001-1200
RMTSRK (Price of MTSRK + Price in the Table)	12						
	14						
	16						
	18						
RMTSLK (Price of MTSLK + Price in the Table)	20						
	22						
	25						
	28						
RMTSWKA/B (Price of MTSWK + Price in the Table)	32						
	36						
	40						
	50						

For low temperature black chrome plated products, add the price of low temperature black chrome plating shown above to the non-plated product prices.

Precision Right and Left-Hand Thread

Part Number	D	Unit Price					
		Min. L - 200	L201-400	L401-600	L601-800	L801-1000	L1001-1200
MTSYKA/B Price in the Table	14						
	16						
	20						
	25						
MTSBYKA/B Price in the Table x1.1	28						
	32						
	36						
	40						



Part Number	L	F	R	T	Q	S	E	X
MTSTRK16	456	F37	R10	T20	Q12	S10	E9	MR4


Alterations	Code	Spec.	Flat Machining	Retaining Ring Groove	Wrench Flats	Coarse Tapping	Threaded	Square Chamfering	Keyway							
										FE (E part)	FR (R part)	AR (R part)	AE (E part)	SE (E part)	SR (R part)	MR (R part)

Specify an alteration position to be 2mm or more away from the stepped part. (For details, see P.787)
 Do not specify multiple alterations in such a way that they overlap with each other in the rotating direction on the same shaft. (For details, see P.787)
 When flat machining, wrench flats, square chamfering and keyway alterations are combined with each other, their orientations will be random. (For details, see P.787)
 When adding multiple alterations, there must be 2mm or more clearance between each feature. (For details, see P.787)

Lead Screw

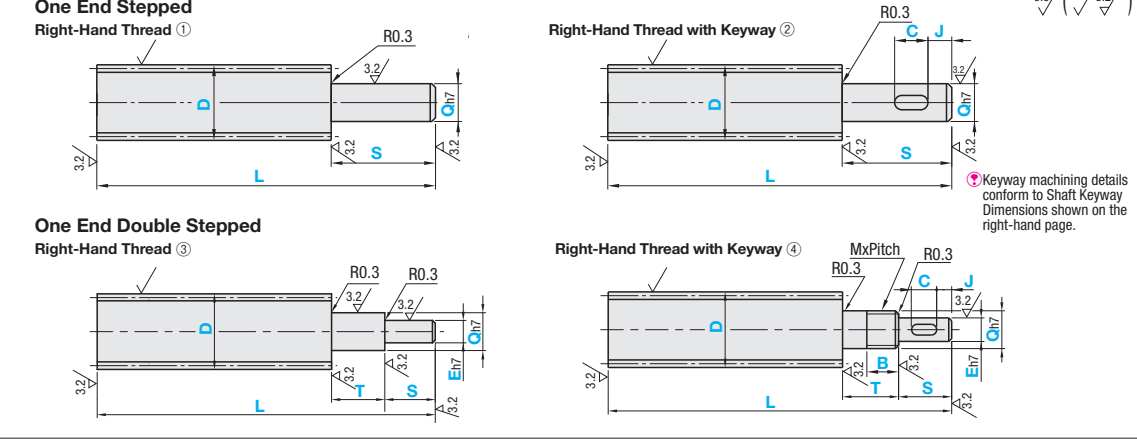
One End Stepped / One End Double Stepped

Can be used when Shaft Length (Stroke) is short.



Type				Material	Surface Treatment
One End Stepped		One End Double Stepped			
① Right-Hand Thread	② Right-Hand Thread with Keyway	③ Right-Hand Thread	④ Right-Hand Thread with Keyway	S45C	Black Oxide Low Temperature Black Chrome Plating
MTSRA	MTSRB	MTSRC	MTSRD		
MTSBRA	MTSBRB	MTSBRC	MTSBRD		
RMTSRA	RMTSRB	RMTSRC	RMTSRD		
MTSTRA		MTSTRC			

• Single Pitch Error...±0.02mm • Accumulated Pitch Error...±0.15/300mm



Keyway machining details conform to Shaft Keyway Dimensions shown on the right-hand page.

Right-Hand Thread

Part Number Type	D	1mm Increment		Q Selection	E 1mm Increment	D	Pitch P
		L	T, S				
① One End Stepped Right-Hand Thread MTSRA MTSBRA RMTSRA D≤32, L≤1000 MTSTRA	8	50-500	2≤S≤Q, Ex7 2≤T≤Qx7 When Q, E≤9, T, S are five or less times of Q, E.	6	Q/2≤E≤Q-1	8	1.5
	10	80-1000		6 7		10	2
	12			6 7 8 9		12	3
	14	100-1200		8 9 10		14	4
	16			9 10 12		16	5
	18			10 12 14 15		18	6
	20			10 12 14 15		20	8
	22	150-1200		12 14 15 16 17		22	10
	24			12 14 15 16 17 20		24	12
	26			14 15 16 17 20 25		26	14
28	17 20 25		28	16			
30	200-1200	20 25 30	30	18			
32		25 30 35 40	32	20			
34			34	22			
36			36	24			
38			38	28			
40			40	32			
42			42	36			
44			44	40			
46			46	45			
48			48	50			

② One End Double Stepped Right-Hand Thread
MTSRB
MTSBRB
RMTSRB
D≤32, L≤1000
MTSBRD
RMTSRD
D≤32, L≤1000

③ One End Double Stepped Right-Hand Thread
MTSRC
MTSBRB
RMTSRC
D≤32, L≤1000
MTSTRC

④ One End Double Stepped Right-Hand Thread
MTSRD
MTSBRD
RMTSRD
D≤32, L≤1000

When combined with position indicators, the standard Q diameters are 8 ~ 20. P811, 812

Right-Hand Thread with Keyway

Part Number Type	D	1mm Increment		Q Selection	1mm Increment			MxPitch	D	Pitch P
		L	T, S		E	C	J			
② One End Stepped MTSRB MTSBRB RMTSRB D≤32, L≤1000	8	80-1000	2≤S≤Q, Ex7 2≤T≤Qx7 When Q, E≤9, T, S are five or less times of Q, E.	7 8 9	E≥6 Q/2≤E≤Q-2	C≤60 S-C-J-2	MxPitch Q=M M8x1.0 M10x1.0 M12x1.0 M14x1.0 M15x1.0 M17x1.0 M20x1.0 M25x1.5 M30x1.5 M35x1.5 M40x1.5 Not applicable to 7, 9, 16	12	2	
	10	100-1200		8 9 10				14	3	
	12			9 10 12				16	4	
	14	150-1200		10 12 14 15				18	5	
	16			10 12 14 15				20	6	
	18			12 14 15 16 17				22	8	
	20			14 15 16 17 20				24	10	
	22	200-1200		17 20 25				26	12	
	24			14 15 16 17 20 25				28	14	
	26			20 25 30				30	16	
28	25 30 35 40		32	18						
30			34	20						
32			36	22						
34			38	24						
36			40	26						
38			42	28						
40			44	30						
42			46	32						
44			48	34						
46			50	36						

When combined with position indicators, the standard Q are 8 ~ 20. P811, 812

Ordering Example

Part Number - L - S - Q - C - J - B

MTSRA16 - 456 - S49 - Q10 - C5 - J0 - B10

MTSRB16 - 456 - S10 - Q12 - C5 - J0 - B10

MTSRC16 - 456 - T20 - Q12 - S10 - E9 - C5 - J0 - B10

MTSRD16 - 456 - T20 - Q12 - S10 - E8 - C5 - J0 - B10

Unit price for the product is price in the table multiplied by price multiplier.
Price in the table x Price Multiplier = Unit Price

① One End Stepped Right-Hand Thread

Part Number Type	D	Unit Price					
		Min. L - 200	L201-400	L401-600	L601-800	L801-1000	L1001-1200
MTSRA Price in the Table	8						
	10						
	12						
	14						
	16						
	18						
	20						
	22						
	24						
	26						
MTSBRA Price in the Table x 1.12	8						
	10						
	12						
	14						
	16						
	18						
	20						
	22						
	24						
	26						
(Stainless Steel) MTSTRA	8						
	10						
	12						
	14						
	16						
	18						
	20						
	22						
	24						
	26						

③ One End Double Stepped Right-Hand Thread

Part Number Type	D	Unit Price					
		Min. L - 200	L201-400	L401-600	L601-800	L801-1000	L1001-1200
MTSRC Price in the Table	8						
	10						
	12						
	14						
	16						
	18						
	20						
	22						
	24						
	26						
MTSBRB Price in the Table x 1.1	8						
	10						
	12						
	14						
	16						
	18						
	20						
	22						
	24						
	26						
(Stainless Steel) MTSTRC	8						
	10						
	12						
	14						
	16						
	18						
	20						
	22						
	24						
	26						

② One End Stepped with Keyway, Right-Hand Thread

Part Number Type	D	Unit Price					
		Min. L - 200	L201-400	L401-600	L601-800	L801-1000	L1001-1200
MTSRB Price in the Table	8						
	10						
	12						
	14						
	16						
	18						
	20						
	22						
	24						
	26						
MTSBRB Price in the Table x 1.1	8						
	10						
	12						
	14						
	16						
	18						
	20						
	22						
	24						
	26						

④ One End Double Stepped with Keyway Right-Hand Thread

Part Number Type	D	Unit Price					
		Min. L - 200	L201-400	L401-600	L601-800	L801-1000	L1001-1200
MTSRD Price in the Table	8						
	10						
	12						
	14						
	16						
	18						
	20						
	22						
	24						
	26						
MTSBRD Price in the Table x 1.1	8						
	10						
	12						
	14						
	16						
	18						
	20						
	22						
	24						
	26						

Low Temperature Black Chrome Plated Products

Part Number Type	D	Unit Price			
		Min. L - 200	L201-400	L401-600	L601-800
RMTSRA/C (Price of MTSRA/C + Price in the Table)	8				
	10				
	12				
	14				
	16				
	18				
	20				
	22				
	24				
	26				
RMTSRB/D (Price of MTSBRB/D + Price in the Table)	8				
	10				
	12				
	14				
	16				
	18				
	20				
	22				
	24				
	26				

For low temperature black chrome plated products, add the price of low temperature black chrome plating shown above to the non-plated product prices.

Alterations

Part Number - L - S - Q - C - J - (MC, MQ ... etc.)

MTSRB16 - 456 - S10 - Q12 - C5 - J0 - MC8

Alterations	Flat Machining	Retaining Ring Groove	Wrench Flats	Coarse Tapping	Threaded For Bearing Nut	Square Chamfering	Keyway																																							
Code	FC (Q part) FE (E part)	AE (E part)	SC (Q part) SE (E part)	MC (Left End) MQ (Q part) ME (E part)	BQ (Q part)	ZQ (Q part) ZE (E part)	KQ (Q part) KE (E part)																																							
Spec.	<p>FC/FE=0 or FC/FE≥2</p> <p>When Q (E)≤25, FY=1.0</p> <p>When Q (E)≥26, FY=2.0</p> <p>3≤FW≤20</p>	<p>Not applicable to One End Stepped Type (including with Right-Hand Thread type with Keyway).</p> <p>AE=0.1mm Increment</p> <p>AE=3~1mm</p> <p>For the m value, see the table below. (For the m value, consider the tolerance.)</p> <p>Extending Code AE13.3</p> <p>AE=Applied on E part</p>	<p>SC is not applicable to One End Double Stepped Type</p> <p>SC, SE, SW, SY=1mm Increment</p> <p>SC=Applied on Q part SE=Applied on E part</p>	<p>E, 4 is not applicable.</p> <p>E, 8 is not applicable to Right-Hand Thread with Keyway</p> <p>MC=Applied on the Left End MQ=Applied on Q part ME=Applied on E part</p> <p>Extending Code MQ24</p> <p>D, Q, E MC, MQ, ME (Selection Range)</p> <table border="1"> <tr><td>5.6</td><td>3</td></tr> <tr><td>7.8</td><td>3.4</td></tr> <tr><td>11.12</td><td>3.4, 5.8</td></tr> <tr><td>13-15</td><td>3.4, 5.8, 8</td></tr> <tr><td>16-24</td><td>3.4, 5.8, 8, 10</td></tr> <tr><td>25-30</td><td>3.4, 5.8, 8, 10, 12, 16</td></tr> <tr><td>31-39</td><td>3.4, 5.8, 8, 10, 12, 16, 20</td></tr> <tr><td>40-50</td><td>3.4, 5.8, 8, 10, 12, 16, 20, 24, 30</td></tr> </table> <p>Q, MxPitch</p> <table border="1"> <tr><td>8</td><td>M6x0.75</td></tr> <tr><td>8</td><td>M8x1.0</td></tr> <tr><td>10</td><td>M10x1.0</td></tr> <tr><td>12</td><td>M12x1.0</td></tr> <tr><td>14</td><td>M14x1.0</td></tr> <tr><td>16</td><td>M16x1.0</td></tr> <tr><td>18</td><td>M18x1.0</td></tr> <tr><td>20</td><td>M20x1.0</td></tr> <tr><td>25</td><td>M25x1.5</td></tr> <tr><td>30</td><td>M30x1.5</td></tr> <tr><td>35</td><td>M35x1.5</td></tr> <tr><td>40</td><td>M40x1.5</td></tr> </table>	5.6	3	7.8	3.4	11.12	3.4, 5.8	13-15	3.4, 5.8, 8	16-24	3.4, 5.8, 8, 10	25-30	3.4, 5.8, 8, 10, 12, 16	31-39	3.4, 5.8, 8, 10, 12, 16, 20	40-50	3.4, 5.8, 8, 10, 12, 16, 20, 24, 30	8	M6x0.75	8	M8x1.0	10	M10x1.0	12	M12x1.0	14	M14x1.0	16	M16x1.0	18	M18x1.0	20	M20x1.0	25	M25x1.5	30	M30x1.5	35	M35x1.5	40	M40x1.5	<p>Not applicable when Q=7, 9, 16</p> <p>BQ=MX3</p> <p>BQ=Pitch3</p> <p>BQ=S, T, Pitch3</p> <p>Only for One End Double Stepped Type, when 25≤Q≤40, D≤E+3</p> <p>W=1mm Increment</p> <p>ZQ=Applied on Q part ZE=Applied on E part</p> <p>Extending Code Z015-W10-A10</p> <p>See P787 for machining conditions.</p> <p>S=20</p> <p>S=2</p> <p>Specify ZE=Q</p>	<p>Not applicable to One End Double Stepped Type</p> <p>Not applicable to One End Stepped Type</p> <p>Not applicable to One End Double Stepped Type</p> <p>C≤60</p> <p>T-C-KQ≥2</p> <p>KQ(K)≥2</p> <p>When KQ, KE=0, Keyway R will be eliminated on the end.</p>
5.6	3																																													
7.8	3.4																																													
11.12	3.4, 5.8																																													
13-15	3.4, 5.8, 8																																													
16-24	3.4, 5.8, 8, 10																																													
25-30	3.4, 5.8, 8, 10, 12, 16																																													
31-39	3.4, 5.8, 8, 10, 12, 16, 20																																													
40-50	3.4, 5.8, 8, 10, 12, 16, 20, 24, 30																																													
8	M6x0.75																																													
8	M8x1.0																																													
10	M10x1.0																																													
12	M12x1.0																																													
14	M14x1.0																																													
16	M16x1.0																																													
18	M18x1.0																																													
20	M20x1.0																																													
25	M25x1.5																																													
30	M30x1.5																																													
35	M35x1.5																																													
40	M40x1.5																																													
Ordering Example	FC5-PW10-FY1		SC3-SW10-SY7	MC24	BQ20	ZQ15-ZE10	KQ12-KE10																																							

