

Linear Bushings

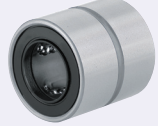
Short, Medium

= For customers selecting MISUMI original specifications =
 The part enclosed in the red frame is as per standard specifications (Outer cylinder SUJ2 equivalent, Retainer resin). Consider these specifications while selecting the product.

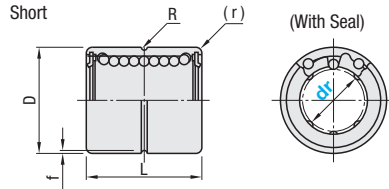
Features: Shorter length (L dim.) compared to Single Type enables length space savings.

MISUMI Original

Short



Type	Outer Cylinder			Balls	Retainer	Ambient Operating Temp.	Accessory
Short	Material	Hardness	Surface Treatment	Material	Material		Material
LMUT	SUJ2 Equivalent	58HRC~	-	SUJ2 Equivalent	Plastic (Duracon M90 Equivalent)	-20~80°C	Seal Material: Nitrile Rubber (-20~120°C)
SLMUT	SUS440C Equivalent	56HRC~	-	SUS440C Equivalent			



- Features of Short Type
- The housing can be made more compact.
 - The L dimensions are made to match MISUMI's standard plates.

RoHS

Short

Type	Part Number		D Tolerance		L Tolerance		R	f	(r)	Eccentricity (Max.)	Rows of Balls	Basic Load Rating		Mass (g)
	dr	Tolerance	No Surface Treatment	Surface Treatment	No Surface Treatment	Surface Treatment						C (Dynamic) N	Co (Static) N	
LMUT SLMUT	6	0 -0.009	12	0	16	0 -0.2	1	0.3	0.4	0.012	4	113	155	6.6
	8		15	-0.011	20		155	226				14.7		
	10		19				254	359				26.1		
	12		21	0	25		317	407				28.6		
	13		23	-0.013			320	413				36.3		
	16		28		30		582	724				60.0		
20	0 -0.010	32	0 -0.016	35		1.5	0.5	0.8	0.015	5	777	1034	81.6	

For Precautions for Use, see P.303
 Short guiding section not suitable for which large moment loads apply. kgf=Nx0.101972

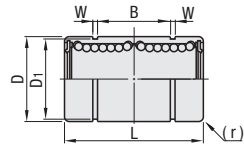
Features: Body length is approximately 1.5 times of single type, and allowable moment is approximately 4.3 times. Suitable for applications where there is no enough space for double type.

MISUMI Original

Medium



Type	Outer Cylinder			Balls	Retainer	Ambient Operating Temp.	Accessory
Straight	Material	Hardness	Surface Treatment	Material	Material		Material
LMUD	SUJ2 Equivalent	58HRC~	-	SUJ2 Equivalent	Plastic (Duracon M90 Equivalent)	-20~80°C	Seal Material: Nitrile Rubber
LMUDM			Electroless Nickel Plating	SUS440C Equivalent			



Body length is approximately 1.5 times of single type, and allowable moment is approximately 4.3 times. (See Allowable Load Comparison)

RoHS

Medium

Type	Part Number		D Tolerance		L Tolerance		B Tolerance		W	D1	(r)	Eccentricity (Max.)	Rows of Balls	Basic Load Rating		Allowable Static Moment (N·m)	Mass (g)						
	dr	Tolerance	No Surface Treatment	Surface Treatment	No Surface Treatment	Surface Treatment	No Surface Treatment	Surface Treatment						C (Dynamic) N	Co (Static) N								
LMUD LMUDM	6	0 -0.010	12	0	29	0 -0.3	20	0 -0.5	1.1	11.5	0.4	0.015	4	226	310	1.42	12						
	8		15	-0.013	37		25		14.3	452				2.12	27								
	10		19				30		18	718				4.37	49								
	12		21	0	47		30		20	814				6.2	54								
	13		23	-0.016	-0.021				22					6.2	69								
	16		28				56		27	1164				14.48	112								
	20		32	0	65		40		30.5	1554				20.68	152								
	25		40	0	83		55		38	1725				30.68	332								
	30		0 -0.012	45	-0.019		-0.025		90	71.3				-0.6	1.85	42.5	2.0	0.02	6	2440	3974	42.7	422

For Precautions for Use, see P.303 kgf=Nx0.101972

dr	Unit Price			
	Short		Medium	
	LMUT	SLMUT	LMUD	LMUDM
6				
8				
10				
12				
13				
16				
20				
25				
30				

Part Number

LMUT8
 LMUD10
 LMUDM12L (L Type Greased)

Alternative grease types available.
 For Days to Ship, Price and Performance, see P.304

Linear Bushings - Compact

Single / Double

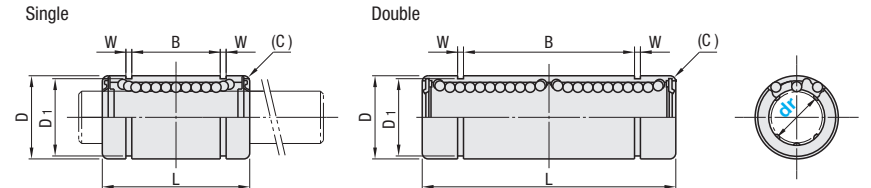
= For customers selecting MISUMI original specifications =
 The products on this page are of standard specifications (Outer cylinder SUJ2 equivalent, Retainer resin). Consider these specifications while selecting the product.

Features: 2mm smaller in O.D. (D dimension) than Standard.

MISUMI Original



Type		Outer Cylinder		Balls	Retainer	Ambient Operating Temp.	Accessory
Single	Double	Material	Hardness	Material	Material		Material
LMK	LMKW	SUJ2 Equivalent	58HRC~	SUJ2 Equivalent	Plastic (Duracon M90 Equivalent)	-20~80°C	Seal Material: Nitrile Rubber (-20~120°C)



RoHS

Single

Type	Part Number		D Tolerance		L Tolerance		B Tolerance		W	D1	(C)	Eccentricity (Max.)	Rows of Balls	Basic Load Rating		Mass (g)	Unit Price
	dr	Tolerance	No Surface Treatment	Surface Treatment	No Surface Treatment	Surface Treatment	No Surface Treatment	Surface Treatment						C (Dynamic) N	Co (Static) N		
LMK	6	0 -0.009	10	0 -0.009	19	0 -0.2	11.3	0 -0.4	1.15	9.6	0.1	0.012	6	131	155	6	
	8		13	0	24		15.3							235	277	12	
	10		17	-0.011	29		19.4							368	433	26	
	12		19	0	30		20.4							381	449	32	
	16		26	-0.013	37		23.3							608	716	58	

Double

Type	Part Number		D Tolerance		L Tolerance		B Tolerance		W	D1	(C)	Eccentricity (Max.)	Rows of Balls	Basic Load Rating		Allowable Static Moment (N·m)	Mass (g)	Unit Price
	dr	Tolerance	No Surface Treatment	Surface Treatment	No Surface Treatment	Surface Treatment	No Surface Treatment	Surface Treatment						C (Dynamic) N	Co (Static) N			
LMKW	6	0 -0.010	10	0 -0.009	35	0 -0.3	24.8	0 -0.5	1.15	9.6	0.1	0.015	6	206	309	2.46	12	
	8		13	0	45		32.8							383	555	5.76	24	
	10		17	-0.011	55		41.4							585	867	10.99	52	
	12		19	0	57		43.4							608	899	11.85	64	
	16		26	-0.013	70		49.8							965	1431	23.48	116	

For Precautions for Use, see P.303 kgf=Nx0.101972



Part Number

- LMK12
- LMKW12
- LMK12L (L Type Greased)
- LMK12G (G Type Greased)
- LMK12H (H Type Greased)

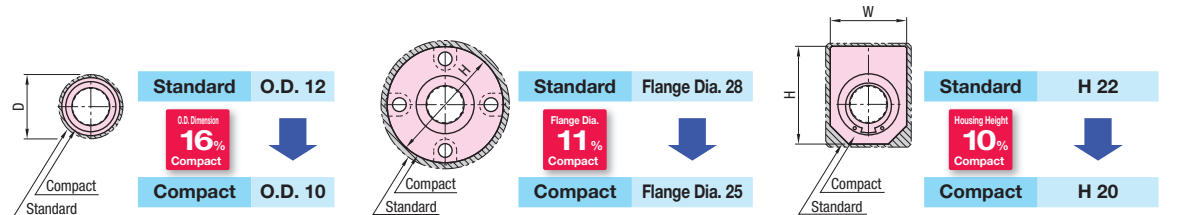
Alternative grease types available.
 For Days to Ship, Price and Performance, see P.304

Dimension comparison of Compact and Standard (When dr=6)

Straight

Flanged(P.305~314)

Housing Unit Type(P.321, 322)



Standard and Compact Comparison

dr	Straight / Flanged			Flanged			Housing Unit						Rows of Balls	
	O.D. (D)			Flange Dia. (H)			Width (W)			Height (H)				
	Compact	Standard	Difference	Compact	Standard	Difference	Compact	Standard	Difference	Compact	Standard	Difference	Compact	Standard
6	10	12	-2	25	28	-3	14	16	-2	20	22	-2	6	4
8	13	15	-2	28	32	-4	17	20	-3	24	26	-2	6	4
10	17	19	-2	35	40	-5	23	26	-3	30	32	-2	6	4
12	19	21	-2	38	42	-4	25	28	-3	32	34	-2	6	4
16	26	28	-2	44	48	-4	33	36	-3	43	49	-6	6	4