

# Links

## Standard Type

■ Features: Two-Hole Type Standard specifications - Selectable and Configurable are available.

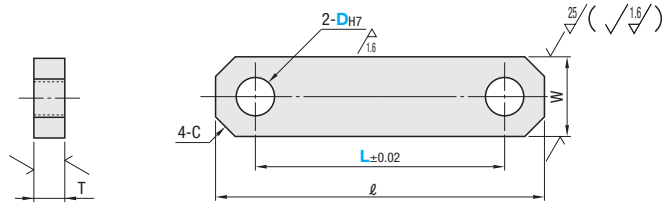
RoHS

L Selectable	D2 Configurable	W Configurable	Type R	Material	Surface Treatment
LNSB	LNDB	LNFB	LNFRB	S45CEquivalent	Black Oxide
-	LNDM	LNFM	LNFRM	-	Electroless Nickel Plating
LNSS	LNDS	LNFS	LNFRS	SUS304	-

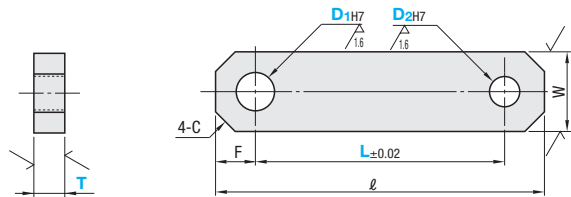
\* S45C for T=2.  
\* SUS304 for T=2.



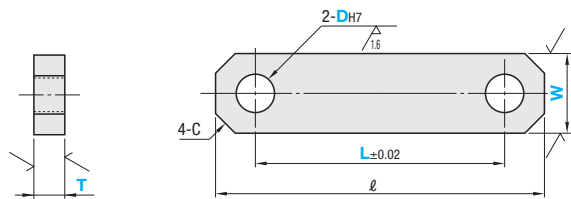
• L Selectable



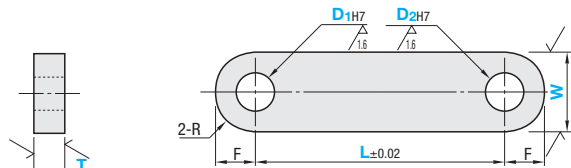
• D2 Configurable



• W Configurable



• Type R



• T Dimension Tolerance

T	2	3-16	19-22
±	0.15	0	0
		-0.3	-0.33

### ■ L Selectable

Part Number Type	DH7	L Selection					W	T	ℓ	C	Unit Price			
		25	30	40	50	75					LNSB	LNSS		
LNSB LNSS	5	25	30	40	50	13	5	L+13	3					
	6	25	30	35	40					45	50	75		
	8	25	30	35	40					45	50	75		
	10	30	30	40	50					75	16	L+16		
	12			50	75	19	9	L+19	5					

### ■ D2 Configurable

Part Number Type	D1H7	D2H7 1mm Increment	L 1mm Increment	T Selection	W	ℓ	F	C
LNDB LNDM LNDS	2	2~20	5~75	2 3	13	L+10	5	2
	3		5~150	5 6				
	4		6~150	5 6 9				
	5		7~150	5 6 9				
	6		8~150	5 6 9				
	8		10~150	5 6 9				
	10		12~200	5 6 9				
	12		14~200	5 6 9 12				
	13		15~200	5 6 9 12				
	14		16~200	5 6 9 12				
	15		18~200	5 6 9 12				
	16		20~200	5 6 9 12 16				
	18		22~200	9 12 16				
	20		25~300	9 12 16 19				
	25		30~300	9 12 16 19				

⊙ When D2H7=2, T≤9

### ■ W Configurable

Part Number Type	DH7	L 1mm Increment	W 1mm Increment	T Selection	ℓ	C
LNFB LNFM LNFS	2	10~75	7~12	2 3	L+8	2
	3			5 6		
	4	10~150	10~20	5 6 9	L+10	3
	5			5 6 9		
	6			5 6 9		
	8			5 6 9 10		
	10	20~200	15~30	5 6 9 10	L+16	5
	12			5 6 9 10 12 16		
	13			5 6 9 10 12 16		
	14			9 10 12 16		
	15			9 10 12 16		
	16			9 10 12 16		
	18			9 10 12 16		
	20			9 10 12 16 19		
	25	30~300	30~60	9 10 12 16 19 22	L+50	8

### ■ Type R

Part Number Type	D1H7	D2H7 1mm Increment	L 1mm Increment	W 1mm Increment	T Selection	F	R
LNFRB LNFRM LNFRS	2	2~20	20~75	6~12	2 3	W/2	W/2
	3		7~20	5 6			
	4		20~150	8~20	5 6 9		
	5			9~20	5 6 9		
	6		10~20	5 6 9			
	8		12~20	5 6 9 10			
	10		30~200	16~30	5 6 9 10		
	12			18~30	9 10 12 16		
	13			19~30	9 10 12 16		
	14			20~40	9 10 12 16		
	15			21~40	9 10 12 16		
	16			22~40	9 10 12 16		
	18			24~40	9 10 12 16		
	20			40~300	30~50		
	25		35~60		9 10 12 16 19 22		

⊙ When D2H7=2, T≤10

Ordering Example

Part Number	D2	L	W	T
LNSB5	-	L25	-	T6
LNDB10	- 8	- L100	- W20	- T9
LNFB10	-	- L60	- W15	- T9
LNFRB8	- 6	- L100	- W15	- T9

D1H7	Unit Price					
	LNDB	LNDM	LNDS	LNFRB	LNFRM	LNFRS
2	Min. L - 100/L101 - Max. L	Min. L - 100/L101 - Max. L	Min. L - 100/L101 - Max. L	Min. L - 100/L101 - Max. L	Min. L - 100/L101 - Max. L	Min. L - 100/L101 - Max. L
3						
4						
5						
6						
8						
10						
12						
13						
14						
15						
16						
18						
20						
25						

DH7	Unit Price		
	LNFB	LNFM	LNFS
2	Min. L - 100/L101 - Max. L	Min. L - 100/L101 - Max. L	Min. L - 100/L101 - Max. L
3			
4			
5			
6			
8			
10			
12			
13			
14			
15			
16			
18			
20			
25			

Alterations

Alteration	Code	Spec.
	LC	L dimension in 0.1mm increment Specify LC instead of L. Ordering Code LC100.5 ⊙ Not available for L Selectable Type

# Links

## 3-Hole

■ Features: 3-Hole Dimension Selectable at 1 mm Increment.

Type	Material	Surface Treatment
LNFTB	S45C	Black Oxide
LNFTM	Equivalent	Electroless Nickel Plating
LNFTS	SUS304	-

• T Dimension Tolerance  
 T 5~16 19~22  
 -0.3~0 -0.33~0

Ⓜ L>S Ⓜ When D>P, W>D+4. When P>D, W>P+4 is required.

### Links - 3-Hole

Part Number Type	*DH7	PH7 1mm Increment	VH7 1mm Increment	L 1mm Increment	S 1mm Increment	*W 1mm Increment	T Selection	F	C
LNFTB LNFTM LNFTS	3	*3~20	3~20 V≤D	10~150 (L≥S)	10~150 (S≤L)	10~20	5 6	5	3
	4						5 6 9		
	5						5 6 9		
	6						5 6 9		
	8						5 6 9 10		
	10						5 6 9 10		
	12			20~200 (L≥S)	20~200 (S≤L)	10~30	10	5	
	13					20~30			9 10 12 16
	14					20~30			9 10 12 16
	15					20~40			9 10 12 16
	16					20~40			9 10 12 16
	18					20~40			9 10 12 16
	20			30~200 (L≥S)	30~200 (S≤L)	25~50	15	8	
	25					30~60			9 10 12 16 19 22
						30~60			9 10 12 16 19 22
						30~60			9 10 12 16 19 22
						30~60			9 10 12 16 19 22
						30~60			9 10 12 16 19 22

\*When D>P, W>D+4; when P>D, W>P+4 is required.

Ordering Example: Part Number - P - V - L - S - W - T  
 LNFTB10 - P8 - V10 - L100 - S50 - W20 - T9



Alterations

Ordering Example: Part Number - P - V - L - S - W - T - (TPD, TPP, TPV)  
 LNFTB20 - P18 - V18 - L50 - S30 - W40 - T16 - TPD

DH7	Unit Price (L≥S)					
	LNFTB	LNFTM	LNFTS	LNFTB	LNFTM	LNFTS
3						
4						
5						
6						
8						
10						
12						
13						
14						
15						
16						
18						
20						
25						

**Tapping**

**Code** TPD, TPP, TPV

**Spec.** Adds tapped holes at D, P and V.  
 Applicable Dimensions

D/P/V	W	Tightening Screw M (Included)
12	24~30	M4
13	25~30	
14	26~40	
15	27~40	
16	28~40	
18	36~40	
20	38~50	M5
25	43~60	

# Links

## Angled / Economy Type

■ Features: Angled with the angle and hole type selectable.

Type	Material	Surface Treatment
LKBK	SS400	Black Oxide
LKBM		Electroless Nickel Plating

Hole Type	
H, HA, M, MA	R
3	3
4	4.5
5	5
6	6.5
8	8.5
10	10
12	11.5
16	14.5

Part Number Type	P	L 1mm Increment	S 1mm Increment	Q 1° Increment	Hole Selection	T Selection	R1	Unit Price	
								LKBK	LKBM
LKBK LKBM	4	40~100	30~100	90~180	H HA M MA	3 4 5 6 8 10 12 16	P/2+6		
	5								
	6								
	8								
	10								
	12								
	14								
	15								
	16								
	18								
	20								
	25								

Ordering Example: Part Number - L - S - Q - H, M - HA, MA - T  
 LKBK10 - L80 - S35 - Q130 - H8 - HA8 - T5

### Links - Economy Type

Type	Material	Surface Treatment
LINB	Steel for General Structure	Black Oxide
LINM		Electroless Nickel Plating
LINS	SUS304	-

Part Number Type	D	L 1mm Increment	T Selection	W	l	Unit Price					
						LINB	LINM	LINS			
LINB LINM LINS	3	10~150	5	10	L+8						
	4		5								
	5		5								
	6		5 9								
	8		5 9								
	10		5 9								
	12		9								
	13		9								
	14		9								
	15		9								
	16		9								
	18		9								
	20		9								
	25		9								
			20~200			19	19	L+20			
						19					
						19					
						19					
	19										
	19										
	30~300	19	25	L+30							
		19									
		19									
		19									
		19									
		19									
	30~300	19	32	L+45							
		19									
		19									
		19									
		19									
		19									

Ordering Example: Part Number - L - T  
 LINS10 - 80 - 9

# Links

## Bearing Embedded

■ Features: Bearing integrated links to support rotations.

RoHS

Type		Material		Surface Treatment		Accessory	
Single Bearing	Double Bearing	Links	Bearing	Links	Bearing	Retaining Ring	Set Screw
LNBB	LNBWB	S45C Equivalent	Steel	Black Oxide	Spring Steel	-	-
LNBM	LNBWM	SUS304	Stainless Steel	Electroless Nickel Plating	SUS304	SUS304	-
-	LNBWS	SUS304	Stainless Steel	-	-	-	-

\* Double Bearing Type has no set screw.

Section View A-A

Single Bearing Type

Double Bearing Type

• T Dimension Tolerance  
T 10~16 19  
-0.3~0 -0.33~0

Bearing Accuracy: JIS B 1514 Class 0 For details, see P. 2239

### Single Bearing Type

Part Number	EH7 Selection		L	W	T	ℓ	F	C	Tightening Screw	Bearing No.	D1H7	Tolerance	dh	B
Type	d1		1mm Increment						M					
LNBB LNBM	5	3 4 5 6 8	20~150	20	10	L+22	10	5	When EH7 is 3 ~ 6, M3 8 ~ 16, M4 18 ~ 25, M6	605ZZ	14	+0.018	10	5
	6	3 4 5 6 8 10	25~150	20	12	L+25	12	6		606ZZ	17	0	13	6
	8	3 4 5 6 8 10 12 13 14 15 16	30~150	29	12	L+32	14	8		608ZZ	22	+0.021	18	7
	10	3 4 5 6 8 10 12 13 14 15 16 18	35~200	34	16	L+36	17	8		6000ZZ	26	0	22	8
	12	3 4 5 6 8 10 12 13 14 15 16 18 20	40~200	36	16	L+40	18	8		6001ZZ	28	0	24	8
	15	3 4 5 6 8 10 12 13 14 15 16 18 20	45~300	40	19	L+44	20	10		6002ZZ	32	+0.025	28	9
	20	3 4 5 6 8 10 12 13 14 15 16 18 20 25	55~300	50	19	L+56	26	10		6004ZZ	42	0	36	12
	25	3 4 5 6 8 10 12 13 14 15 16 18 20 25	55~300	56	19	L+63	29	10		6005ZZ	47	0	41	12

### Double Bearing Type

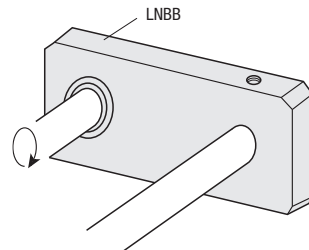
Part Number	d2 Selection		L	W	T	ℓ	F	C	d1/d2 Dimensions	Bearing No.			
Type	d1		1mm Increment						d1 d2	D1H7	dh	B	
LNBWB LNBWM LNBWS	5	5	20~150	20	10	L+20	10	5	5	14	10	5	605ZZ
	6	5 6	25~150	20	12	L+24	12	6	6	17	13	6	606ZZ
	8	5 6 8	30~150	29	12	L+28	14	8	8	22	18	7	608ZZ
	10	5 6 8 10	30~150	34	16	L+34	17	8	10	26	22	8	6000ZZ
	12	5 6 8 10 12	35~200	36	16	L+36	18	8	12	28	24	8	6001ZZ
	15	5 6 8 10 12 15	40~200	40	19	L+40	20	10	15	32	28	9	6002ZZ
	20	5 6 8 10 12 15 20	45~300	50	19	L+52	26	10	20	42	36	12	6004ZZ
	25	5 6 8 10 12 15 20 25	55~300	56	19	L+58	29	10	25	47	41	12	6005ZZ

Ordering Example: Part Number - E - d2 - L  
LNBB12 - 16 - 5 - 150  
LNBWS10 - 5 - 150

d1	Unit Price				
	LNBB	LNBM	LNBWB	LNBWM	LNBWS
5	Min. L - 100	L101 - Max. L	Min. L - 100	L101 - Max. L	Min. L - 100
6					
8					
10					
12					
15					
20					
25					



• Fixes the shaft by the set screw side, and supports rotations by the bearing side.



# Links

## Oil Free Bushings Press Fit

■ Features: Links with embedded oil free bushings to prevent abrasions by rotating.

RoHS

Type		Material		Surface Treatment		Accessory	
Single Bushing	Double Bushing	Links	Bushing	Links	Bushing	Retaining Ring	Set Screw
-	LNMBW	S45C Equivalent	Oil Free Bushing	Black Oxide	Electroless Nickel Plating	Hex Socket Set Screw (SUS304)	-
-	LNMBM	SUS304	Oil Free Bushing	Electroless Nickel Plating	-	-	-
-	LNMS	SUS304	Oil Free Bushing	-	-	-	-

\* Double Bearing Type has no set screw.

Section View A-A

Single Bushing Type

Double Bushing Type

• The housing diameter of press fit part of oil free bushing is finished by tolerance H7.

Part Number	D1	D2 Selection	L	T	W	ℓ	F	C	Tightening Screw
Type			1mm Increment						M
Single Bushing Type LNMS	3	3 4	10~150	5	13	L+10	5	3	M3
	4	3 4	10~150		16	L+12	6		
	5	3 4 5	10~150		17	L+14	8		
	6	3 4 5 6	10~150	6	22	L+17	8	5	M4
	8	4 5 6 8	10~150		25	L+19	9		
	10	5 6 8	15~200		28	L+21	10		
	12	6 8	20~200	9	30	L+22	10	8	M6
	13	6 8 10 12 13	20~200		32	L+25	12		
	14	8 10 12 13 15	20~200		38	L+28	14		
	15	8 10 12 13 15	20~200	12	50	L+32	15	18	
	16	8 10 12 13 15	20~200		50	L+38	18		
	18	10 12 13 15 16 18	35~300						
	20	10 12 13 15 16 18 20	35~300						
	25	12 13 15 16 18 20 25	35~300						
	Double Bushing Type LNMWB LNMWM LNMWS	3	3	10~150	5	13	L+10	5	3
4		3 4	10~150	16		L+12	6		
5		3 4 5	10~150	17		L+14	8		
6		3 4 5 6	10~150	6	22	L+16	8	5	
8		4 5 6 8	15~150		25	L+18	9		
10		5 6 8 10	15~150		30	L+20	10		
12		6 8 10 12	20~200	9	32	L+24	12	8	
13		6 8 10 12 13	20~200		38	L+28	14		
15		8 10 12 13 15	20~200		50	L+30	15		
16		8 10 12 13 15 16	20~200	12	50	L+36	18	18	
18		10 12 13 15 16 18	35~300						
20		10 12 13 15 16 18 20	35~300						
25		12 13 15 16 18 20 25	35~300						

Ordering Example: Part Number - D2 - L  
LNMS10 - 6 - 70

### Oil Free Bushing

Single Bushing Type		Oil Free Bushing		Double Bushing Type		Oil Free Bushing (2 pcs.)	
D1	D2	d (I.D.)	L (Overall Length)	D1	D2	d (I.D.)	L (Overall Length)
3, 4, 5, 6	3	3	4	3, 4, 5, 6	3	3	4
	4	4	4		4	4	4
	5	5	4		5	5	4
8, 10, 12	6	6	4	8	6	6	4
	4	4	5		4	4	5
	5	5	5		5	5	5
13, 14, 15, 16	6	6	5	10, 12, 13, 15	6	6	5
	8	8	5		8	8	5
	6	6	8		6	6	8
	8	8	8		8	8	8
	10	10	8		10	10	8
	12	12	8		12	12	8
18, 20, 25	13	13	8	16, 18, 20, 25	13	13	8
	15	15	8		15	15	10
	8	8	5		8	8	10
	6	6	8		6	6	8
	10	10	10		10	10	10
	12	12	10		12	12	10
20, 25	13	13	10	20, 25	13	13	10
	15	15	10		15	15	10
	16	16	10		16	16	10
	18	18	10		18	18	10
	20	20	10		20	20	10
	25	25	10		25	25	10

D1	Unit Price							
	LNMS		LNMWB		LNMWM		LNMWS	
3	Min. L - 100	L101 - Max. L	Min. L - 100	L101 - Max. L	Min. L - 100	L101 - Max. L	Min. L - 100	L101 - Max. L
4								
5								
6								
8								
10								
12								
13								
14								
15								
16								
18								
20								
25								



# Links

## General Purpose

■ Features: Selection can be made from Square or Round Type.

**RoHS**

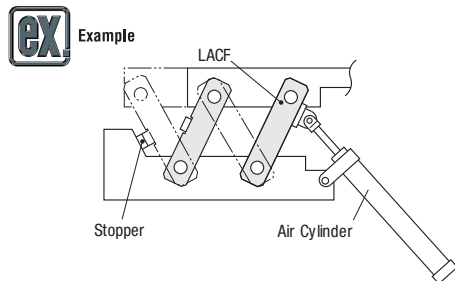
Type		Material
Square	Round	
LACF	LACG	Steel for General Structure

■ General Purpose

Part Number	DH7	L 5mm Increment	W Selectable	A	B	F	Unit Price			
							LACF	LACG		
Square LACF	3	40~100	5 6 9	20	20	15				
	4									
	5									
	Round LACG	6	50~100	5 6 9 12	25	25	18			
		8								
		10								
60~120		12	9 12 16 19	12 16 19	28	28	20			
		13								
		14								
		12 16 19 22	15							
			16							
			18							
20										
25										

Ordering Example: Part Number - L - W  
LACF12 - 120 - 16

Alterations: Part Number - L - W - (KC, SC)  
LACF10 - 75 - 16 - KC



Alterations	30° Relief Machining	Groove, Tapping Alterations
	<p><b>Code</b> KC</p> <p><b>Spec.</b> Adds 30° relief machining                      * Not applicable when L-(Fx2)&lt;30.                      * Machining in the same direction as above drawing when specifying with SC alterations.</p>	<p><b>Code</b> SC</p> <p><b>Spec.</b> Adds a relief and a tap for mounting a stopper.                      * Not applicable when L-(Fx2)&lt;30.</p>

# Clamp Links

## Standard Type for Rod End Bearings / 2 Clamps Type

■ Features: Select can be made from three types of materials.

**Standard Type for Rod End Bearings**

**RoHS**

Type	Material	Surface Treatment	Accessory
CLKB	S45C	Black Oxide	Hex Socket Head Cap Screw (S0M43)
CLKM	Equivalent	Electroless Nickel Plating	Hex Socket Head Cap Screw (SUS304)
CLKS	SUS304	-	-
CLKA	Aluminum Alloy	-	-

■ Dimension Table

d	3	4	5	6	8	10	12	14	15	16	18	20	25
5	L+16	L+17	L+18										
6	L+17	L+18	L+19	L+20									
8	L+21	L+22	L+23	L+24									
10	L+25	L+26	L+27	L+28	L+29								
12	L+23	L+24	L+25	L+27	L+30								
14	L+27	L+28	L+29	L+31	L+32								
15	L+27	L+28	L+30	L+32	L+34	L+35							
16	L+30	L+31	L+33	L+34	L+35	L+36							
18	L+32	L+33	L+35	L+36	L+37	L+38	L+40						
20	L+32	L+34	L+35	L+36	L+37	L+38	L+40	L+42					
25	L+36	L+37	L+38	L+39	L+40	L+42	L+44	L+48					

**2 Clamps Type**

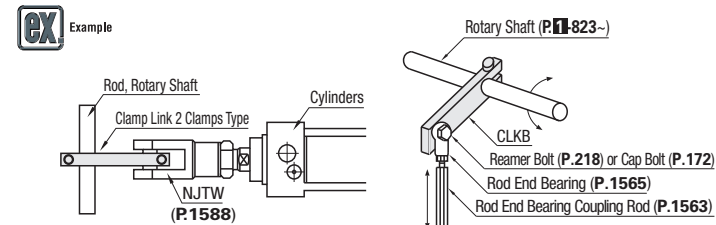
**RoHS**

Type	Material	Surface Treatment	Accessory
CLKWB	S45C	Black Oxide	Hex Socket Head Cap Screw (S0M43)
CLKWM	Equivalent	Electroless Nickel Plating	Hex Socket Head Cap Screw (SUS304)
CLKWS	SUS304	-	-

Part Number	DH7	d Selection	L 1mm Increment	W	F	G	Included Screw M (2 pcs.)	d1	T	Unit Price				
										CLKWB	CLKWM	CLKWS	CLKWS	
CLKWB CLKWM CLKWS	5	3 4 5	10~100	10	11	6	M4-10	4.5	6					
	6	3 4 5 6												
	8	4 5 6 8												
	15~150	10	4 5 6 8 10	12	12	14	8	M6-12	6.6	10				
		12	5 6 8 10 12											
		14	6 8 10 12 14											
	20~150	15	6 8 10 12 14 15	15	18	12	12	M6-20	9	12				
		16	8 10 12 14 15 16											
		18	8 10 12 14 15 16 18											
	30~150	20	8 10 12 14 15 16 18 20	20	22	15	15	M8-25	15	15				
		25	10 12 14 15 16 18 20 25											
		32	25 18											
40~150	28		28	22	15	15	M8-30	9	15					
	32	25 18												

Ordering Example: Part Number - d - L  
CLKB8 - 6 - 100  
CLKWM20 - 16 - 100

Alterations: Part Number - d - L - (DKC, CKC, RC)  
CLKB12 - 8 - 90 - DKC



Alterations	Part of Reamer Machining (for and L, Tolerance)	C Chamfering	Part of Slotted Hole
	<p><b>Code</b> DKC</p> <p><b>Spec.</b> Adds reamer machining (dr) on d part and changes L tolerance.                      * For 2 Clamps Type, change L tolerance only.                      * d: Chamfering</p>	<p><b>Code</b> CKC</p> <p><b>Spec.</b> Adds chamfering on d side.                      * Z=1mm Increment                      * Z=1mm Increment                      * 1-Z&lt;100                      * Combination with DKC is not available.                      * Applicable for CLKB, CLKM, CLKS and CLKA only.</p>	<p><b>Code</b> RC</p> <p><b>Spec.</b> Changes d part to slotted hole.                      * Z=1mm Increment                      * RC-25</p>