

Pulley Holders for Conveyor - Bearing Type

Dedicated web site <http://fa.misumi.jp/cvs/>
 Conveyor selecting, component purchases, and easy search for maintenance parts are available.

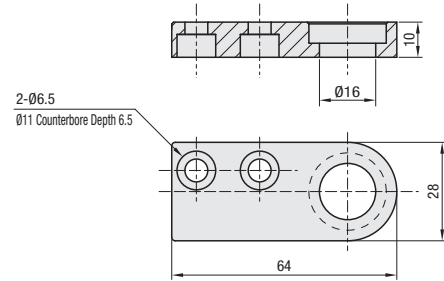
Pulley Holders for Conveyor - Tension Type

Dedicated web site <http://fa.misumi.jp/cvs/>
 Conveyor selecting, component purchases, and easy search for maintenance parts are available.

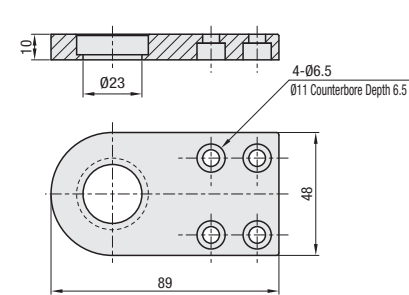


MMaterial Aluminum
SSurface Treatment Paint

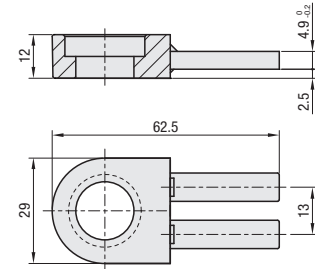
PLHDB-FC-R



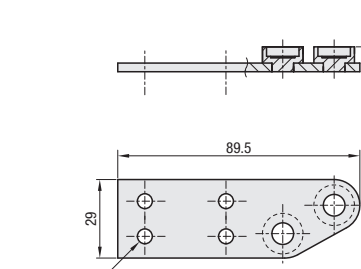
PLHDB-FD-R



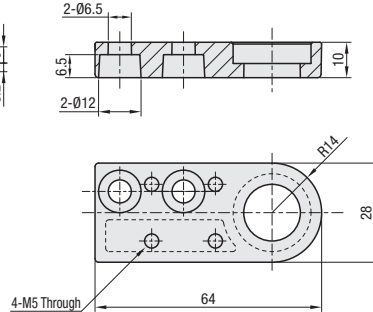
PLHDB-FE



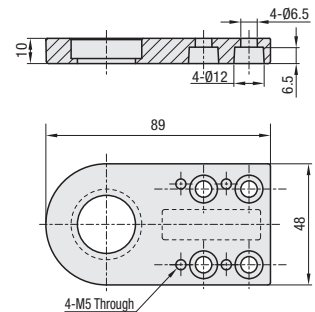
PLHDB-FER-R



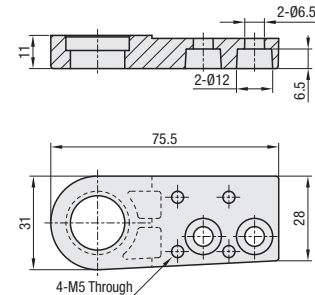
PLHDB-FF-R



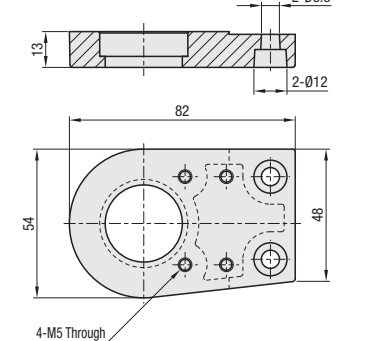
PLHDB-FG-R



PLHDB-TC-R



PLHDB-TD-R



Ⓜ Drawing with trailing L is reversed type of R.
 Ⓜ For detail dimensions, see the e-Catalog.
 Ⓜ Bearings are not included. Please specify in alterations if needed.

| Part Number | Shape Selection | Right/Left | Bearing | | | | | | | Applicable Conveyors | Unit Price | |
|-------------|-----------------|------------|-------------|----|----|----|---------|---------|---------|----------------------|------------|--------|
| | | | Bearing No. | d | D | B | Ds min. | Ds max. | dh max. | | | R max. |
| PLHDB | FC | (Right) R | B6900ZZ | 10 | 22 | 6 | 12 | 13 | 20 | 0.3 | CVSFA | |
| | | (Left) L | B6001ZZ | 12 | 28 | 8 | 14 | 16 | 26 | 0.3 | CVSFC | |
| | FD | (Right) R | B6900ZZ | 10 | 22 | 6 | 12 | 13 | 20 | 0.3 | CVSFB | |
| | | (Left) L | B6001ZZ | 12 | 28 | 8 | 14 | 16 | 26 | 0.3 | CVSFD | |
| | FE | (Right) R | B6900ZZ | 10 | 22 | 6 | 12 | 13 | 20 | 0.3 | CVSSA | |
| | | (Left) L | B6001ZZ | 12 | 28 | 8 | 14 | 16 | 26 | 0.3 | SVKA | |
| | FER | (Right) R | B6900ZZ | 10 | 22 | 6 | 12 | 13 | 20 | 0.3 | SVKB | |
| | | (Left) L | B6001ZZ | 12 | 28 | 8 | 14 | 16 | 26 | 0.3 | SVKN | |
| | FF | (Right) R | B6900ZZ | 10 | 22 | 6 | 12 | 13 | 20 | 0.3 | SVKR | |
| | | (Left) L | B6001ZZ | 12 | 28 | 8 | 14 | 16 | 26 | 0.3 | SVKN | |
| | FG | (Right) R | B6900ZZ | 10 | 22 | 6 | 12 | 13 | 20 | 0.3 | SVKR | |
| | | (Left) L | B6001ZZ | 12 | 28 | 8 | 14 | 16 | 26 | 0.3 | SVKR | |
| TC | (Right) R | B6801ZZ | 12 | 21 | 5 | 14 | 14.5 | 19 | 0.3 | CVGA | | |
| | (Left) L | B6002ZZ | 15 | 32 | 9 | 17 | 19 | 30 | 0.3 | CVGB | | |
| TD | (Right) R | B6801ZZ | 12 | 21 | 5 | 14 | 14.5 | 19 | 0.3 | CVGP | | |
| | (Left) L | B6002ZZ | 15 | 32 | 9 | 17 | 19 | 30 | 0.3 | CVGN | | |

Ordering Example
 Part Number - Shape Selection - Right/Left
PLHDB - FC - L

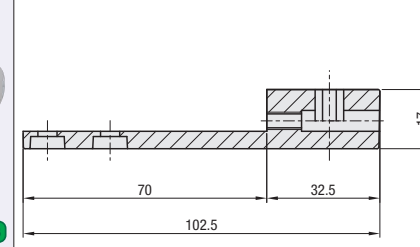
Alterations
 Part Number - Shape Selection - Right/Left - (BR)
PLHDB - FC - L - BR

| Alterations | Code | Spec |
|-------------|-----------|---|
| | BR | Bearing is attached to the pulley holder. Ordering Code BR |

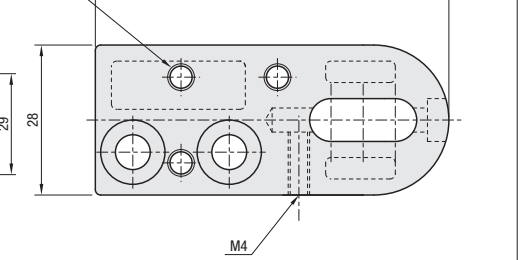
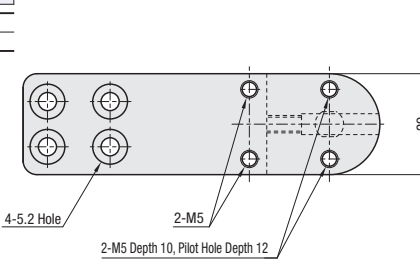
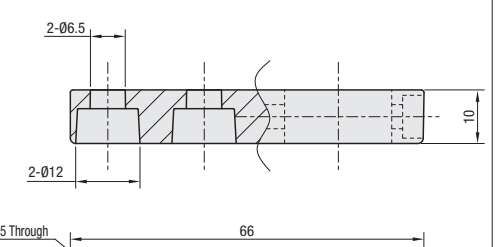


MMaterial Aluminum
SSurface Treatment Paint

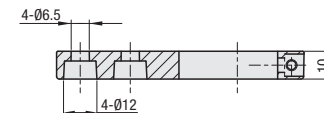
PLHDT-FE



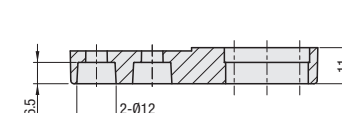
PLHDT-FJ-R



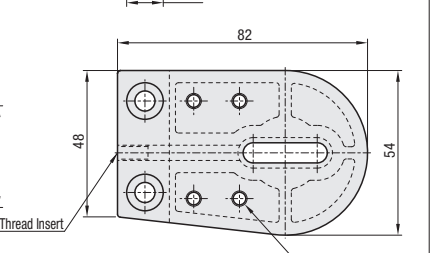
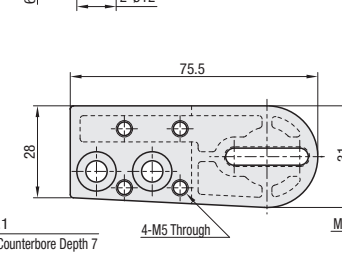
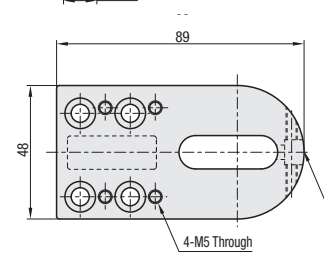
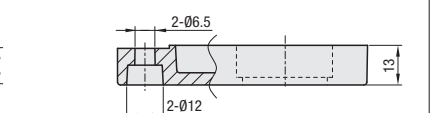
PLHDT-FK-R



PLHDT-TC-R



PLHDT-TD-R

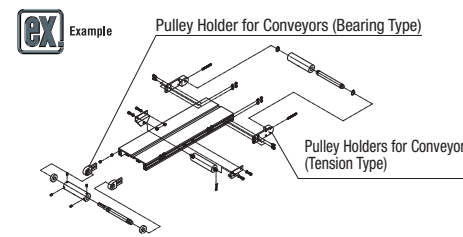


Ⓜ Drawing with trailing L is reversed type of R.
 Ⓜ For detail dimensions, see the e-Catalog.

| Part Number | Shape Selection | Right/Left | Tension Bolt Part Number | Applicable Conveyors | Unit Price |
|-------------|-----------------|------------|--------------------------|----------------------|------------|
| PLHDT | FE | - | FABBS5-45 | SVKA | |
| | | - | SVKB | | |
| | FJ | - | SCB4-28 | CVGA | |
| | | - | CVGB | | |
| | FK | (Right) R | ACB5-35 | CVGP | |
| | | (Left) L | | CVGN | |
| | TC | (Right) R | - | CVGC | |
| | | (Left) L | | CVGD | |
| | TD | (Right) R | - | CVGR | |
| | | (Left) L | | CVGW | |
| | TD | (Right) R | - | CVGTA | |
| | | (Left) L | | CVGTB | |

Ordering Example
 Part Number - Shape Selection - Right/Left
PLHDT - FJ - L

Alterations
 Part Number - Shape Selection - Right/Left - (TB)
PLHDT - FJ - L - TB



| Alterations | Code | Spec |
|-------------|-----------|---|
| | TB | Tension bolt is attached to the pulley holder Ordering Code TB |

Conveyor Belt Support Cover

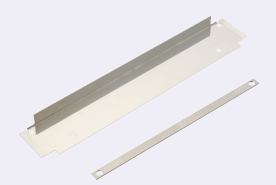
Dedicated Website://fa.misumi.jp/cvs/

Conveyor components and maintenance parts can be searched.

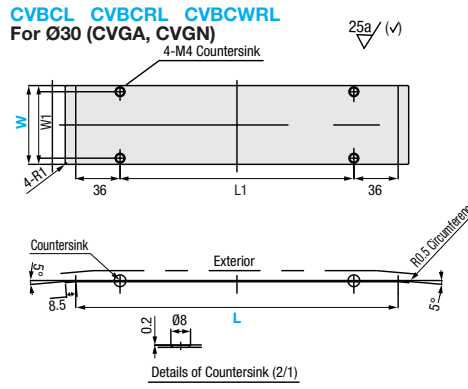
Pulley Holders for Conveyor

Dedicated Website://fa.misumi.jp/cvs/

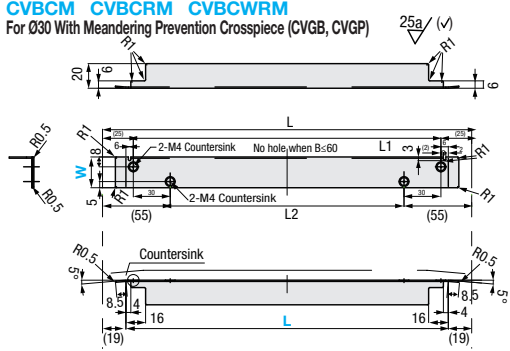
Conveyor components and maintenance parts can be searched.



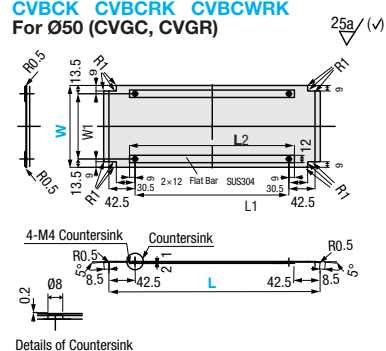
CVBCL CVBCRL CVBCWRL
For Ø30 (CVGA, CVGN)



CVBCM CVBCRM CVBCWRM
For Ø30 With Meandering Prevention Crosspiece (CVGB, CVGP)



CVBCK CVBCRK CVBCWRK
For Ø50 (CVGC, CVGR)



Material: SUS304

RoHS

■ For Ø30 (CVGA, CVGN)

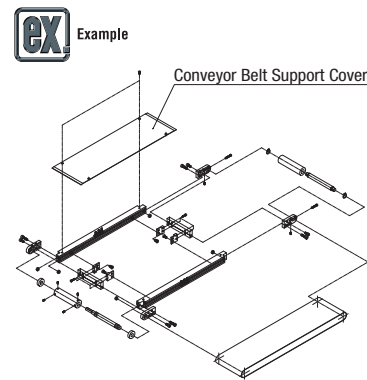
| Part Number | W | | L1 | L2 | Applicable Conveyors | Unit Price | | | |
|-------------|---------------|---------------|------|-------|----------------------|------------|-----------|------------|------------|
| | 1mm Increment | 1mm Increment | | | | L130~500 | L501~1000 | L1001~1500 | L1501~2000 |
| CVBCL | 40~100 | 130~2000 | W-10 | L-72 | CVGA CVGN | | | | |
| | 101~200 | | | | | | | | |
| | 201~350 | | | | | | | | |
| CVBCRL | 40~100 | 130~2000 | W-10 | L-121 | CVGN (HR-MR) | | | | |
| | 101~200 | | | | | | | | |
| | 201~350 | | | | | | | | |
| CVBCWRL | 40~100 | 130~2000 | W-10 | L-131 | CVGN (WR) | | | | |
| | 101~200 | | | | | | | | |
| | 201~350 | | | | | | | | |

■ For Ø30 With Meandering Prevention Crosspiece (CVGB, CVGP)


| Part Number | W | | L1 | L2 | Applicable Conveyors | Unit Price | | | |
|-------------|---------------|---------------|------|-------|----------------------|------------|-----------|------------|------------|
| | 1mm Increment | 1mm Increment | | | | L120~500 | L501~1000 | L1001~1500 | L1501~2000 |
| CVBCM | 15~100 | 120~2000 | L-50 | L-110 | CVGB CVGP | | | | |
| | 101~150 | | | | | | | | |
| | 151~200 | | | | | | | | |
| CVBCRM | 15~100 | 120~2000 | L-61 | L-121 | CVGP (HR-MR) | | | | |
| | 101~150 | | | | | | | | |
| | 151~200 | | | | | | | | |
| CVBCWRM | 15~100 | 120~2000 | L-72 | L-132 | CVGP (WR) | | | | |
| | 101~150 | | | | | | | | |
| | 151~200 | | | | | | | | |

■ For Ø50 (CVGC, CVGR)

| Part Number | W | | L1 | L2 | Applicable Conveyors | Unit Price | | | | |
|-------------|---------------|---------------|------|-------|----------------------|-----------------|-----------|------------|------------|--|
| | 1mm Increment | 1mm Increment | | | | L170~500 | L501~1000 | L1001~1500 | L1501~2000 | |
| CVBCK | 70~100 | 170~2000 | W-27 | L-85 | L-67 | CVGC CVGR | | | | |
| | 101~200 | | | | | | | | | |
| | 201~350 | | | | | | | | | |
| CVBCRK | 70~100 | 170~2000 | W-27 | L-110 | L-92 | CVGR (HR-MR) | | | | |
| | 101~200 | | | | | | | | | |
| | 201~350 | | | | | | | | | |
| CVBCWRK | 70~100 | 170~2000 | W-27 | L-135 | L-117 | CVGR (WR) | | | | |
| | 101~200 | | | | | | | | | |
| | 201~350 | | | | | | | | | |



Ordering Example: Part Number - W - L
CVBCM - 150 - 1940



PLHDR-FE-R
12 $\frac{1}{2}$ (12 $\frac{1}{2}$)

PLHDR-FF-R
12 $\frac{1}{2}$ (12 $\frac{1}{2}$)

PLHD-TC-R
12 $\frac{1}{2}$ (12 $\frac{1}{2}$)

PLHD-TD-R
12 $\frac{1}{2}$ (12 $\frac{1}{2}$)

PLHD-PA-R
12 $\frac{1}{2}$ (12 $\frac{1}{2}$)

PLHD-FE-R
12 $\frac{1}{2}$ (12 $\frac{1}{2}$)

PLHD-FF-R
12 $\frac{1}{2}$ (12 $\frac{1}{2}$)

| Part Number | Material | Surface Treatment |
|-------------|----------|--------------------|
| PLHDR-FE | Aluminum | Clear Anodize |
| PLHDR-FF | Aluminum | Clear Anodize |
| PLHD-TC | Aluminum | Paint |
| PLHD-TD | Aluminum | Paint |
| PLHD-PA | Aluminum | Gold Anodize |
| PLHD-FE | SS400 | Trivalent Chromate |
| PLHD-FF | SS400 | Trivalent Chromate |

Material: SUS304

RoHS

Ⓢ Drawing having L inserted on the end of its Dwg. No. is for Reversed Type of R.

| Part Number | Shape Selection | Right/Left | Applicable Conveyors | Unit Price |
|-------------|-----------------|-----------------------|----------------------|------------|
| PLHDR | FE | (Right) R (Left) L | CVGR | |
| | FF | | CVGW | |
| | TC | | CVGN | |
| PLHD | TD | | CVGP | |
| | PA | | CVGTP | |
| | FE | | CVGTN | |
| | FF | CVSPA | | |
| | | | CVSFA | |
| | | | CVSFC | |
| | | | CVSFB | |
| | | | CVSFD | |

Ⓢ PLHDR is used when alterations of HR, MR, or WR are applied to the applicable conveyors.
Ⓢ PLHD-TC and TD are molded products, and therefore available at reasonable prices.

Ordering Example: Part Number - Shape Selection - Right/Left
PLHD - FE - L