

Roller Conveyor Length Configurable

Roller 28, 38mm Diameter Type

■ Features: Short roller conveyors 1m or less, with configurable width and length.

Roller Dia.	Roller Pitch				① Roller (HRO28, HRO38)		② Frame	
	P=30	P=50	P=75	P=100	M Material	S Surface Treatment	M Material	S Surface Treatment
28mm	ROCOM	ROCOG	-	-	Steel	Trivalent Chromate	Steel	Trivalent Chromate
38mm	-	ROCOE	ROCOH	ROCOJ	-	-	-	-

Roller Dia.	Roller Pitch				R Pin		Frame Coupling Support		Screw, Nut	
	P=30	P=50	P=75	P=100	M Material	S Surface Treatment	M Material	S Surface Treatment	M Material	S Surface Treatment
28mm	ROCOM	ROCOG	-	-	Steel	Trivalent Chromate	Steel	Trivalent Chromate	Steel	Trivalent Chromate
38mm	-	ROCOE	ROCOH	ROCOJ	-	-	-	-	-	-

⚠ Holes for Roller Shafts are provided at 50mm pitch on ROCOJ (P=100) frames.

⚠ For Alterations, see P.1170. ⚠ For Frame Side View, see P.1166.

■ Roller 28mm Diameter Type

Part Number	Number of Rollers	(L)		Unit Price									
		ROCOM P=30	ROCOG P=50	ROCOM (P=30)					ROCOG (P=50)				
Type				W113	W213	W313	W413	W513	W113	W213	W313	W413	W513
7	(230)	(350)											
8	(260)	(400)											
9	(290)	(450)											
10	(300)	(500)											
11	(330)	(550)											
12	(360)	(600)											
13	(390)	(650)											
14	(430)	(700)											
15	(460)	(750)											
16	(490)	(800)											
17	(530)	(850)											
18	(560)	(900)											
19	(590)	(950)											
20	(600)	-											
21	(630)	-											
22	(660)	-											
23	(690)	-											
24	(730)	-											
25	(760)	-											
26	(790)	-											
27	(830)	-											
28	(860)	-											
29	(890)	-											
30	(900)	-											
31	(930)	-											
32	(960)	-											

■ Roller 38mm Diameter Type

Part Number	Number of Rollers	(L)			Unit Price 1 ~ 5 pcs.															
		ROCOE P=50	ROCOH P=75	ROCOJ P=100	ROCOE (P=50)					ROCOH (P=75)					ROCOJ (P=100)					
Type					W113	W213	W313	W413	W513	W113	W213	W313	W413	W513	W113	W213	W313	W413	W513	
4	(200)	(300)	(350)																	
5	(250)	(375)	(450)																	
6	(300)	(475)	(550)																	
7	(350)	(500)	(650)																	
8	(400)	(575)	(750)																	
9	(450)	(675)	(850)																	
10	(500)	(775)	-																	
11	(550)	(800)	-																	
12	(600)	(875)	-																	
13	(650)	(975)	-																	
14	(700)	-	-																	
15	(750)	-	-																	
16	(800)	-	-																	
17	(850)	-	-																	
18	(900)	-	-																	
19	(950)	-	-																	

Ordering Example: Part Number - W
 Rocom20 - 413
 ROCO16 - 213
 ROCOE8 - 313
 ROCOJ6 - 113

Alterations: P.1170

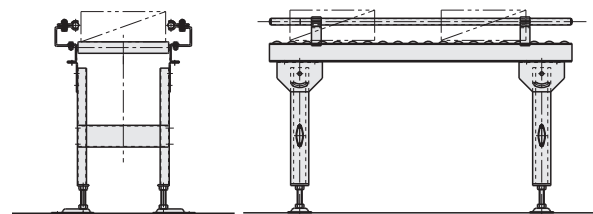
Roller Conveyor Parts Alterations

Stands / Guide Mounts for Roller Conveyors

Alterations: Part Number - W - (SH, GA, GT, KN, ST, SW)
 ROCO38 - 113 - GA-A-L550
 ROCO38 - 113 - KN-G2
 ROCO38 - 113 - ST-F550
 ROCO38 - 113 - GA-A-L550-KN-G2-ST-F550

Alterations	Code	Spec.
<p>Stand Mounting Hole Machining</p> <p>Material: Steel S Surface Treatment: Zinc Plating</p>	SH	Roller Conveyors can be hole drilled for stand mounting. Ordering Code SH SH alteration is applied to ROCOP. Cannot be combined with ST Number of Holes for (L) dimension 400 or less is 2, and with the division of center there are 100 Pitches. Not applicable to (L) dimension 150 or less.
<p>Conveyor Guide Rails</p> <p>Material: Steel S Surface Treatment: Zinc Plating</p>	GA GT	GA : One Conveyor guide is added. GT : Two Conveyor guides are added. Specify L : 100 ~ 1000, in 5mm increment. Ordering Code Code - Shape - Length GA - A - L300 GA - B - L450 GA - C - L550 Packaged together with Roller Conveyors.
<p>Guide Holder Bracket</p> <p>Material: Steel S Surface Treatment: Trivalent Chromate</p>	KN	Guide mounting brackets can be added to Roller Conveyors. Ordering Code KN-G2 (Guide Holder Brackets 2pcs.) Mounting screws and nuts (M10) are included. The code numerals represent quantities. Shipped unassembled. W+150 Guide Integrated (=Roller Width W) W+15 W
<p>Conveyor Stand</p> <p>Material: Steel (SS400) S Surface Treatment: Trivalent Chromate</p>	ST SW	ST : Adds one Roller Conveyor Stand. SW : Adds two Roller Conveyor Stands. Specify F : 450~1200, in 50mm increment. Ordering Code ST-F950 Applies hole machining on Roller Conveyor when SW is specified. Shipped unassembled. Mounting hole location is the same as Alteration SH. One reinforcement piece for F800 or less.

Roller Conveyor part alterations are RoHS compliant.



Conveyor Wheels / Rubber and Urethane Lined Wheels for Conveyors

Miniature Roller Panels / Miniature Roller Chutes

Conveyor Wheels

Machined Wheels
HMH
HMHS

Pressed Wheels
HPH

Type	Material	Surface Treatment
HPH	Steel	Trivalent Chromate
HMH	Steel	Chromate
HMHS	Stainless Steel	-

Conveyor Wheels (Pressed Wheels)

Part Number	No.	W	D	d	d1	B	Allowable Load (N)	Unit Price	Volume Discount Rate
Type								1 ~ 4 pc(s).	5~30 pcs.
HPH	25	16	25.4	6.2	10	10	294		
	36	25	36	6.5	11	10	147		
	38	25	38	6.5	11	12	196		
	50	28	50	8.2	13	20	245		

Conveyor Wheels (Machined Wheels)

Part Number	D	W	d	d1	B	Allowable Load (N)	HMH		HMHS	
							Unit Price	Volume Discount Rate	Unit Price	Volume Discount Rate
Type							1 ~ 4 pc(s).	5~30 pcs.	1 ~ 4 pc(s).	5~30 pcs.
HMH HMHS	*25	16	6.2	12	9	294				
	36	25	6.2	14	9	392				
	50	20	8.2	19	14.5	784				
	50	20A	10.2	19	14.5	980				
	50	32	8.2	19	14.5	980				

* HMHS applies only to D25. kgf=Nx0.101972

Ordering Example: Part Number - W

Example: HPH25 - 16, HMHS25 - 16

Rubber and Urethane Lined Wheels for Conveyors

Milled Rollers
HGH
HUH
HMHU
HMHSU

Press Formed Rollers
HPHU

Type	Roller Type	Material	Surface Treatment	Material of Roller Surface
HGH	Milled Roller	Steel	Trivalent Chromate	Nitrile Rubber (White) (Shore A60)
HUH	Milled Roller	Steel	Trivalent Chromate	Polyurethane (Blue) (Shore A90)
HMHU	Milled Roller	Stainless Steel	-	Polyurethane (Black) (Shore A90)
HMHSU	Milled Roller	Stainless Steel	-	Polyurethane (Black) (Shore A90)
HPHU	Press Formed Rollers	Steel	Trivalent Chromate	-

Part Number	D	W	d	d1	B	T	Allowable Load (N)										
							HGH	HUH	HMHU	HMHSU	HPHU	HGH		HUH		HMHU	
Type							1 ~ 4 pc(s).	5~30 pcs.	1 ~ 4 pc(s).	5~30 pcs.	1 ~ 4 pc(s).	5~30 pcs.	1 ~ 4 pc(s).	5~30 pcs.	1 ~ 4 pc(s).	5~30 pcs.	
HGH HUH	40	25	6.2	14	9	4	196	294	-	-	-	-	-	-	-	-	-
		14	8.2	14	9	4	196	294	-	-	-	-	-	-	-	-	-
		28	8.2	14	9	4	196	294	-	-	-	-	-	-	-	-	-
HMHU HMHSU	60	20	12	19	13	5	490	490	-	-	-	-	-	-	-	-	-
		30	16	6.2	10	10	2.5	-	-	294	147	-	-	-	-	-	-

kgf=Nx0.101972

Ordering Example: Part Number - W

Example: HGH40 - 25

Features: Use of small diameter and low friction rollers allows rolling of conveyed objects even on small incline.

Miniature Roller Panels

Type	Material	Accessory
MICRO	ABS Plastic	Aluminum

Roller Section Detailed Photo

Part Number	W	L	P	Load	Unit Price
MICRO	122	200	160	3kg/100cm ²	
	244	300	267		

Ordering Example: Part Number - W - L

Example: MICRO - 122 - 200

Inclined Transfer Test

Subjects	Weight (g)	Angle (θ)
Cardboard Box	1200	4°
PET Bottle	500	
Canned Goods	350	

* The above values may vary depending on conveyed contents, and should be used as reference.

Miniature Roller Chutes

Type	Material	Accessory
MCRSLD	SUS304	① Miniature Roller Panels (MICRO) ② SUS M3 Screw, Washer 4 pcs. each.

Part Number	W	H	L	F	Unit Price
MCRSLD	122	30	200	70	
	244	50	300	110	

Ordering Example: Part Number - H - L

Example: MCRSLD122 - 30 - 200

Ordering Example: Part Number - H - L

Example: MCRSLD122 - 30 - 200