

Basic Guide Pins

Tip Shape Selectable, Eccentric

■ **Features:** Pin-shaped Basic Guides that can be used to various shapes of workpieces. Tip shapes and mounting parts are selectable.

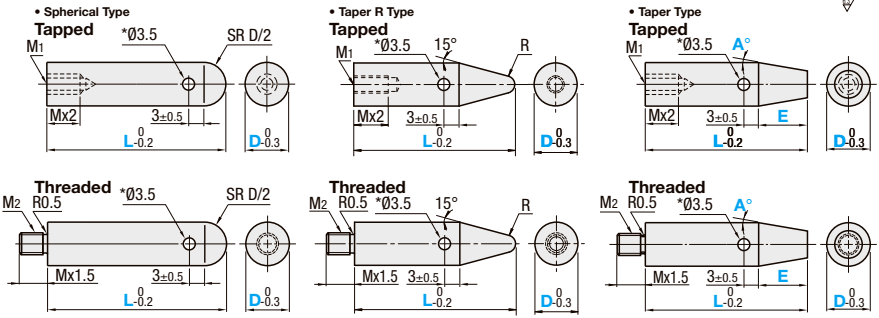
Tip Shape Selectable



Mounting Part	Type			Material	Surface Treatment
	Sphere	Taper R	Tapered		
Tapped	RGPT	RGPR	RGPT	S45C Equivalent	Electroless Nickel Plating
	RGPS	RGPRS	RGPTS	SUS304	-
Threaded	RGPN	RGPRN	RGPTN	S45C Equivalent	Electroless Nickel Plating
	RGPNs	RGPRNs	RGPTNs	SUS304	-

Reference: $\tan 15^\circ = 0.267$ $\tan 45^\circ = 1$ $\tan 30^\circ = 0.577$ $\tan 60^\circ = 1.732$

⚠ When D = 6, $\phi 2.0$
When D = 20 and 25, $\phi 5.0$



Spherical Type

Part Number	Type	D	L 1mm Increment	M1 (Coarse)	M2 (Coarse)
Tapped RGPT RGPTS	6	15~100	3	-	-
	8	20~100	4	-	-
	10	20~100	5	6	-
Threaded RGPN RGPNs	12	21~100	6	8	-
	15	26~100	8	-	-
	20	28~100	6	-	-
	25	31~100	10	-	-

Taper R Type

Part Number	Type	D	L 1mm Increment	M1 (Coarse)	M2 (Coarse)	R
Tapped RGPR RGPRS	6	20~100	3	-	1	-
	8	24~100	4	-	1.5	-
	10	26~100	5	6	2	-
Threaded RGPRN RGPRNs	12	32~100	6	8	-	-
	15	40~100	8	-	-	-
	20	47~100	6	-	-	-
	25	57~100	10	3	-	-

Taper Type

Part Number	Type	D	L 1mm Increment	E 0.5mm Increment	A 1° Increment	M1 (Coarse)	M2 (Coarse)		
Tapped RGPT RGPTS	6	20~100	3	For Tapped 5.0≤E	1~45	3	-		
	8							4	5
	10								
12	6	8							
15			6	10					
20					10	10			
25	-	-							

⚠ Threaded Type is available only when D ≥ 10.

⚠ L-Mx2 ≥ (D x 1.85) - (R x 2.75) - 1

⚠ Threaded Type is available only when D ≥ 10.

⚠ D-2E tan A ≥ 1.0 (Tip diameter $\phi 1.0$ or more)

⚠ Threaded Type is available only when D ≥ 10.

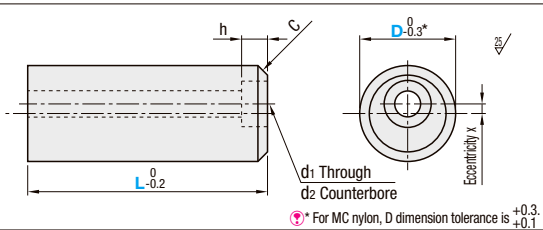
Ordering Example: Part Number - L - E - A
RGPT10 - 40 - E10 - A5

D	Unit Price																	
	Spherical Type				Taper R Type				Taper Type									
	L15-59		L60-100		L20-59		L60-100		L20-59		L60-100							
	RGPT	RGPS/RGPN	RGPNs	RGPT	RGPS/RGPN	RGPNs	RGPR	RGPRS	RGPRN	RGPRNs	RGPT	RGPTS	RGPTN	RGPTNs	RGPT	RGPTS	RGPTN	RGPTNs
6	-	-	-	-	-	-	-	-	-	-	-	-	-	-	-	-	-	-
8	-	-	-	-	-	-	-	-	-	-	-	-	-	-	-	-	-	-
10	-	-	-	-	-	-	-	-	-	-	-	-	-	-	-	-	-	-
12	-	-	-	-	-	-	-	-	-	-	-	-	-	-	-	-	-	-
15	-	-	-	-	-	-	-	-	-	-	-	-	-	-	-	-	-	-
20	-	-	-	-	-	-	-	-	-	-	-	-	-	-	-	-	-	-
25	-	-	-	-	-	-	-	-	-	-	-	-	-	-	-	-	-	-

Eccentric



Type	Material	Surface Treatment
RGPEZ	S45C Equivalent	Electroless Nickel Plating
RGPEZS	SUS304	-
RGPEZMC	MC Nylon	-



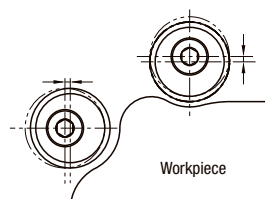
⚠ D6 has no counterbored hole. It only has through holes.

⚠ For MC nylon, D dimension tolerance is $+0.3$ / -0.1

Part Number	Type	D	L 10mm Increment	d1	d2	C	h				Applicable Screw	Eccentricity x	Unit Price						
							L10-40	L50-100	L110-120	L130, 140			L10-60	L70-100	L110-140	RGPEZ	RGPEZS	RGPEZMC	RGPEZ
RGPEZ RGPEZS RGPEZMC	6	10-30	3.5	-	0.2	-	-	-	-	M3	0.5	-	-	-	-	-	-	-	-
	12	20-40	4.5	8	0.2	5	-	-	-	M4	1	-	-	-	-	-	-	-	-
	15	20-50	4.5	8	0.2	5	-	-	-	M4	2	-	-	-	-	-	-	-	-
	20	30-70	5.5	9.5	1	6	20	-	-	M5	2	-	-	-	-	-	-	-	-
	25	30-120	6.6	11	1	7	25	-	-	M6	2	-	-	-	-	-	-	-	-
	30	30-140	9	14	1	9	30	-	-	M8	2	-	-	-	-	-	-	-	-

Ordering Example: Part Number - L
RGPEZ25 - 80

Example



Eccentricity in the counterbored hole position makes fine adjustments of guiding position possible. Suitable for guiding workpieces which are not accurate in finished dimensions, such as castings.

Basic Guides

Standard, Narrow

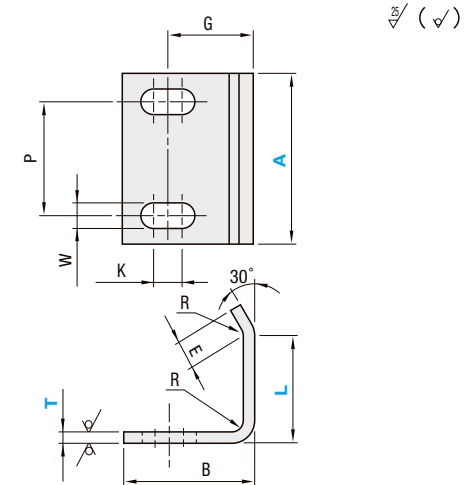
■ **Features:** This guide can be used as a tool to guide a workpiece into a fixture. For the Basic Guides for Welding Fixtures, see P.1749.

Standard



Part Number	Material	Surface Treatment
RGH	SPCC	-
RGHN		Electroless Nickel Plating
RGHS	SUS304	-

⚠ When plate thickness is 4.5, material is SPHC.



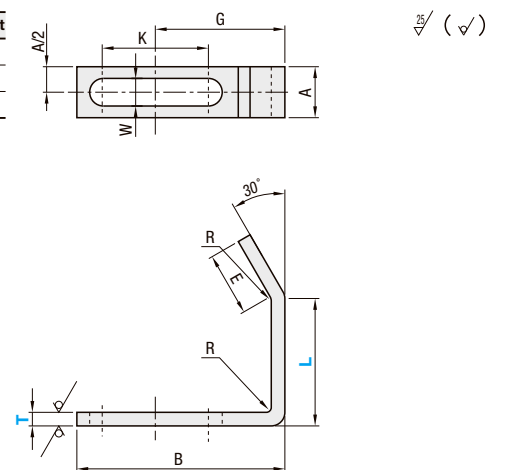
Part Number	T Selection		A Selection	L 5mm Increment	B	E	P	K	W	G	Rmax	Unit Price		
	SPCC	SUS304										RGH	RGHN	RGHS
RGH RGHN RGHS	1.6	1.5	20 30	15~50	23	6	12	10	3.5	13.8	1.5	-	-	-
	2.3	2.0	30 40	20~60	26	10	20	10	4.5	16.3	2	-	-	-
	3.2	3.0	35 40	30~80	32	15	20	10	6.5	21.3	3	-	-	-
	4.5	4.0	35 40 50	40~100	35	20	20	10	6.5	23.3	4	-	-	-

Narrow



Part Number	Material	Surface Treatment
RGN	SPCC	-
RGNN		Electroless Nickel Plating
RGNS	SUS304	-

⚠ When plate thickness is 4.5, material is SPHC.



Part Number	T Selection		L 5mm Increment	A	B	E	K	W	G	Rmax	Unit Price		
	SPCC	SUS304									RGN	RGNN	RGNS
RGN RGNN RGNS	2.3	2.0	10~50	10	40	10	24	4.5	23	2	-	-	-
	3.2	3.0	20~70	12	52	15	30	6.5	31	3	-	-	-
	4.5	4.0	20~70	12	55	20	30	6.5	34	4	-	-	-
											-	-	-

Ordering Example: Part Number - T - A - L
RGH - 1.6 - 20 - 15

Ordering Example: Part Number - T - L
RGNS - 3.0 - 40

Roller Pushers / Point Pads

Low Dust Generation Type

Features: Can be used for alignment adjustment for thin workpieces such as glass plates. Low dust generation bearings are used.

Roller Pushers
- Low Particle Generation Type

RoHS

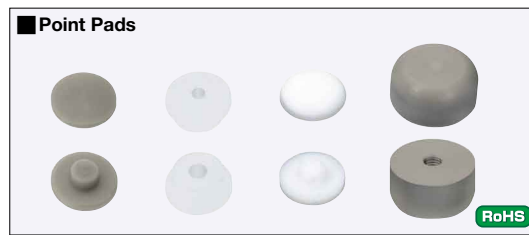
Type Components (1,2,3,4,5)	Material			
	1 Cap	2 Post	3 Holder	4 Screw (Low Dust Generation)
RLLP	Polyacetal			
RLLUP	Ultra High-Molecular-Weight Polyethylene	SUS304	SUS304	SUSXM7
RLLPK	PEEK			

* Low Dust Generation Grease Filled Bearing SBC6□□ZZ P.1009
25 / (6.3 / 1.6 /)

Example: As the cap rotates, it prevents the workpiece from being damaged.

Part Number Type	D	L 5mm Increment	H	D1	4 Screw	C	t	h	d	B	M	Unit Price		
												RLLP	RLLUP	RLLPK
RLLP	10	5-30	10	7.5	SCB2.6-5	0.2	5.5	2.5	7	5	M3			
RLLUP	20	10-50	14	12	SCB4-6	0.5	7.5	5	16	10	M6			
RLLPK	30	10-70	18	12	SCB5-8	0.5	9	8	26	13	M8			

Ordering Example: Part Number - L
RLLP10 - 20



Spherical Type	Type			Material
	Hole Type	Flat Type	Tapped Type	
PDKPK	-	PDAPK	PDUPK	PEEK
-	-	PDATF	-	PTFE Resin
PDKUP	PDCUP	PDAUP	PDUUP	Ultra High-Molecular-Weight Polyethylene

Spherical Type

Suction Hole Type

Flat Type

Tapped Type

Spherical Type Features: Suitable for reducing contact area since the pads make point contacts.

Part Number Type	D	d	(R)	PDKPK (PEEK)		PDKUP (Ultra High-Molecular-Weight Polyethylene)	
				Unit Price	Volume Discount Rate	Unit Price	Volume Discount Rate
PDKPK (PEEK)	3	1.5	2.5				
PDKUP (Ultra High-Molecular-Weight Polyethylene)	4	2	4.25				
	5	2	6.5				

For orders larger than indicated quantity, please check with WOS.

Suction Hole Type Features: Can be used for vacuum pickup of objects such as glass plates.

Part Number Type	D	d	PDCUP (Ultra High-Molecular-Weight Polyethylene)	
			Unit Price	Volume Discount Rate
PDCUP (Ultra High-Molecular-Weight Polyethylene)	5	4		
	8	5		
	10	5		

For orders larger than indicated quantity, please check with WOS.

Flat Type Features: Can be used when surface contacting with objects are desired.

Part Number Type	D	d	PDAPK (PEEK)		PDATF (PTFE Resin)		PDAUP (Ultra High-Molecular-Weight Polyethylene)	
			Unit Price	Volume Discount Rate	Unit Price	Volume Discount Rate	Unit Price	Volume Discount Rate
PDAPK (PEEK)	3	1.5						
PDATF (PTFE Resin)	4	2						
PDAUP (Ultra High-Molecular-Weight Polyethylene)	5	2						

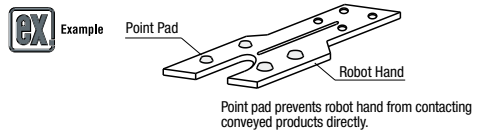
For orders larger than indicated quantity, please check with WOS.

Tapped Type Features: Can be used for screw fastening.

Part Number Type	D	PDUPK (PEEK)		PDUUP (Ultra High-Molecular-Weight Polyethylene)	
		Unit Price	Volume Discount Rate	Unit Price	Volume Discount Rate
PDUPK (PEEK)	10				
PDUUP (Ultra High-Molecular-Weight Polyethylene)	15				
	20				

For orders larger than indicated quantity, please check with WOS.

Ordering Example: Part Number
PDKPK3 (Spherical Type)
PDCUP10 (Suction Hole Type)
PDATF3 (Flat Type)
PDUPK20 (Tapped Type)



Lift Pins

Features: Useable for lifting work objects that require isolation from metal contacts. A 50% more economical length selectable type is introduced.

Lift Pins

RoHS

L Selectable	Type		Main Body	Material	
	L Configurable	L, B Configurable		Main Body	Tip
-	LPCE	LPFCE	SUS304	Ceramic (Alumina 99)	
LPEPK	LPPK	LPFPK		PEEK	
-	LPMC	LPFMC		MC Nylon	

L Selectable Type

Part Number Type	D	L Selection	B Fixed	M (Coarse)	H	W	SR	Unit Price		
								L 25, 50	L 75, 100	L 120
LPEPK	3	25 50 75 100 120	4.5	3	6	5	1.2			
	4		6	4	8	7				
	5		7.5	5	9	7				
	6		9	6	10	8	2			

L Configurable Type

Part Number Type	D	L 1mm Increment	B Fixed	M (Coarse)	H	W	SR	Unit Price					
								L15-50			L51-120		
								LPCE	LPPK	LPMC	LPCE	LPPK	LPMC
LPCE LPPK LPMC	3	15-120	4.5	3	6	5	1.2						
	4		6	4	8	7							
	5		7.5	5	9	7							
	6		9	6	10	8	2						
	8		12	8	12	10							
10	15	10	15	13	3.2								

L, B Configurable Type

Part Number Type	D	L 1mm Increment	B 0.5mm Increment	M (Coarse)	H	W	SR	Unit Price					
								L15-50			L51-120		
								LPFCE	LPFPK	LPFMC	LPFCE	LPFPK	LPFMC
LPFCE LPFPK LPFMC	3	15-120	5.0-9.0	3	6	5	1.2						
	4		6.5-12.0	4	8	7							
	5		8.0-15.0	5	9	7							
	6		9.5-18.0	6	10	8	2						
	8		12.5-24.0	8	12	10							
10	15.5-30.0	10	15	13	3.2								

Ordering Example: Part Number - L - B
LPEPK3 - 120 (L Selectable)
LPCE4 - 72 (L Configurable)
LPFCE5 - 75 - B9.0 (L, B Configurable)

