

Basic Guide Pins

Tip Shape Selectable, Eccentric

■ Features: Pin-shaped Basic Guides that can be used to various shapes of workpieces. Tip shapes and mounting parts are selectable.

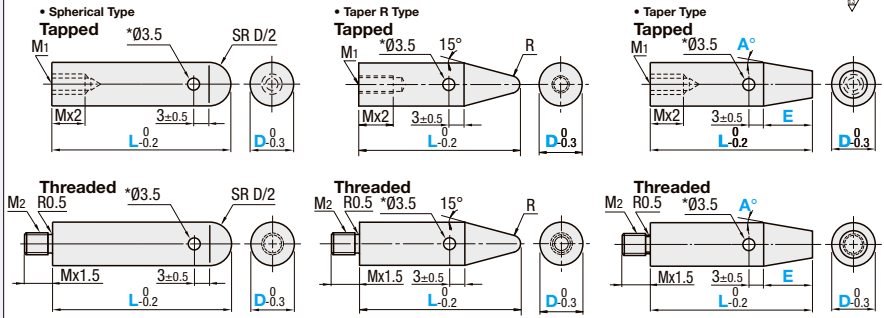
Tip Shape Selectable



Mounting Part	Type			Material	Surface Treatment
	Sphere	Taper R	Tapered		
Tapped	RGPT	RGPR	RGPT	S45C Equivalent	Electroless Nickel Plating
	RGPS	RGPRS	RGPTS	SUS304	-
Threaded	RGPN	RGPRN	RGPTN	S45C Equivalent	Electroless Nickel Plating
	RGPNs	RGPRNs	RGPTNs	SUS304	-

Reference: $\tan 15^\circ = 0.267$ $\tan 45^\circ = 1$ $\tan 30^\circ = 0.577$ $\tan 60^\circ = 1.732$

* When D=6, $\phi 2.0$
When D=20 and 25, $\phi 5.0$



Spherical Type

Part Number	Type	D	L 1mm Increment	M1 (Coarse)	M2 (Coarse)
Tapped RGPT RGPTS	6	15~100	3	-	-
	8	20~100	4	-	-
	10	20~100	5	6	-
	12	21~100	6	8	-
Threaded RGPN RGPNs	15	26~100	8	-	-
	20	28~100	6	-	-
	25	31~100	10	-	-

Taper R Type

Part Number	Type	D	L 1mm Increment	M1 (Coarse)	M2 (Coarse)	R
Tapped RGPR RGPRS	6	20~100	3	-	1	-
	8	24~100	4	-	1.5	-
	10	26~100	5	6	2	-
	12	32~100	6	8	-	-
Threaded RGPRN RGPRNs	15	40~100	8	-	-	-
	20	47~100	6	-	-	-
	25	57~100	10	-	-	-

Taper Type

Part Number	Type	D	L 1mm Increment	E 0.5mm Increment	A 1° Increment	M1 (Coarse)	M2 (Coarse)
Tapped RGPT RGPTS	6	20~100	3	For Tapped 5.0≤E E≤L-M1x3	1~45	3	-
	4					5	
	5					6	
	6					8	
Threaded RGPTN RGPTNs	15	20	6	For Threaded 5.0≤E E≤L-7	1~45	6	10
	8					10	
	10					10	

* Threaded Type is available only when D≥10.

* L-Mx2≥(D x 1.85)-(R x 2.75)-1

* Threaded Type is available only when D≥10.

* D-2EtanA≥1.0 (Tip diameter $\phi 1.0$ or more)

* Threaded Type is available only when D≥10.

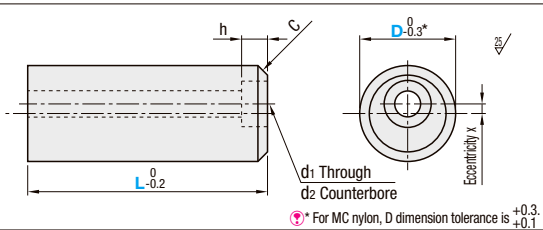
Ordering Example: Part Number - L - E - A
RGPT10 - 40 - E10 - A5

D	Unit Price																			
	Spherical Type				Taper R Type				Taper Type											
	L15-59	L60-100	L20-59	L60-100	L20-59	L60-100	L20-59	L60-100												
6	RGPT	RGPS	RGPN	RGPNs	RGPR	RGPRS	RGPRN	RGPRNs	RGPT	RGPTS	RGPTN	RGPTNs	RGPT	RGPTS	RGPTN	RGPTNs				
8	-	-	-	-	-	-	-	-	-	-	-	-	-	-	-	-	-	-	-	
10	-	-	-	-	-	-	-	-	-	-	-	-	-	-	-	-	-	-	-	
12	-	-	-	-	-	-	-	-	-	-	-	-	-	-	-	-	-	-	-	
15	-	-	-	-	-	-	-	-	-	-	-	-	-	-	-	-	-	-	-	
20	-	-	-	-	-	-	-	-	-	-	-	-	-	-	-	-	-	-	-	
25	-	-	-	-	-	-	-	-	-	-	-	-	-	-	-	-	-	-	-	

Eccentric



Type	Material	Surface Treatment
RGPEZ	S45C Equivalent	Electroless Nickel Plating
RGPEZS	SUS304	-
RGPEZMC	MC Nylon	-

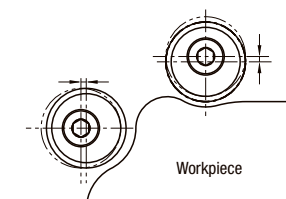


* D6 has no counterbored hole. It only has through holes.

Part Number	Type	D	L 10mm Increment	d1	d2	C	h				Applicable Screw	Eccentricity x	Unit Price		
							L10-40	L50-100	L110-120	L130, 140			L10-60	L70-100	L110-140
							RGPEZ	RGPEZS	RGPEZMC	RGPEZ			RGPEZS	RGPEZMC	RGPEZ
RGPEZ RGPEZS RGPEZMC	6	10-30	3.5	-	0.2	-	-	-	-	M3	0.5	-	-	-	
	12	20-40	4.5	8	0.2	5	-	-	-	M4	1	-	-	-	
	15	20-50	4.5	8	0.2	5	-	-	-	M4	2	-	-	-	
	20	30-70	5.5	9.5	1	6	20	-	-	M5	2	-	-	-	
	25	30-120	6.6	11	1	7	25	30	-	M6	2	-	-	-	
	30	30-140	9	14	1	9	30	-	-	M8	2	-	-	-	

Ordering Example: Part Number - L
RGPEZ25 - 80

Example



Eccentricity in the counterbored hole position makes fine adjustments of guiding position possible. Suitable for guiding workpieces which are not accurate in finished dimensions, such as castings.

Basic Guides

Standard, Narrow

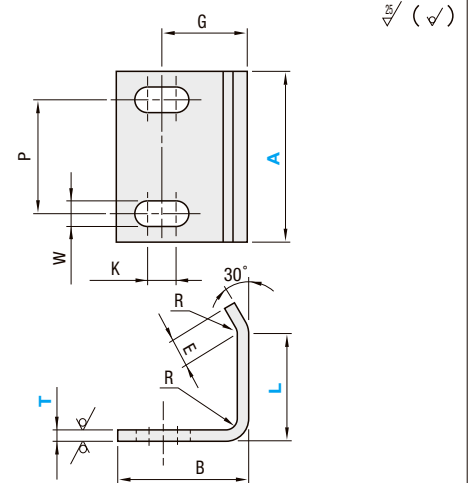
■ Features: This guide can be used as a tool to guide a workpiece into a fixture. For the Basic Guides for Welding Fixtures, see P.1749.

Standard



Part Number	Material	Surface Treatment
RGH	SPCC	-
RGHN		Electroless Nickel Plating
RGHS	SUS304	-

* When plate thickness is 4.5, material is SPHC.



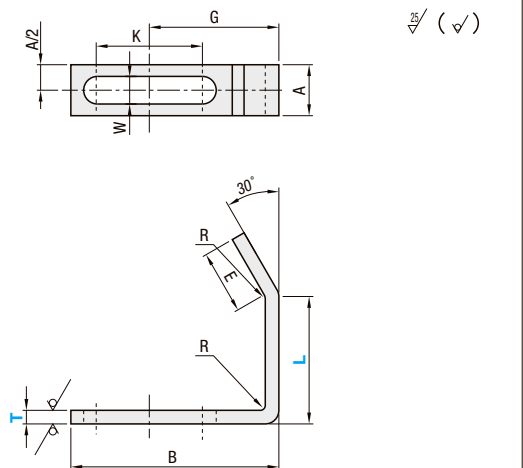
Part Number	T Selection		A Selection	L 5mm Increment	B	E	P	K	W	G	Rmax	Unit Price		
	SPCC	SUS304										RGH	RGHN	RGHS
	RGH RGHN RGHS	1.6										1.5	20 30	15~50
2.3		2.0	30 40	20~60	26	10	20	10	4.5	16.3	2	-	-	-
3.2		3.0	35 40	30~80	32	15	20	10	6.5	21.3	3	-	-	-
4.5		4.0	35 40 50	40~100	35	20	20	10	6.5	23.3	4	-	-	-

Narrow



Part Number	Material	Surface Treatment
RGN	SPCC	-
RGNN		Electroless Nickel Plating
RGNS	SUS304	-

* When plate thickness is 4.5, material is SPHC.



Part Number	T Selection		L 5mm Increment	A	B	E	K	W	G	Rmax	Unit Price		
	SPCC	SUS304									RGN	RGNN	RGNS
	RGN RGNN RGNS	2.3									2.0	10~50	10
3.2		3.0	20~70	12	52	15	30	6.5	31	3	-	-	-
4.5		4.0	20~70	12	55	20	30	6.5	34	4	-	-	-

Ordering Example: Part Number - T - A - L
RGH - 1.6 - 20 - 15

Ordering Example: Part Number - T - L
RGNS - 3.0 - 40

Basic Guides for Welding Fixtures / Guide Plates

Round Pole, Plate, Ribbed

■ Features: Can be used as work guides. The point contacting enables easier insertion and removal.

■ Round Pole Type

Type	Material	Hardness
GMRS	SS400	-
GMLH	S45C	45-55HRC

⚠ Only the Round Pole parts are hardened. The Plate parts are not hardened.

⚠ The Round Poles and the Mounting Plates are welded.

Part Number Type	D	Mounting Side Selection	L 5mm Increment	F 5mm Increment	Unit Price			
					GMRS	GMLS	GMRH	GMLH
GMRS	9	R	100~300	30~50				
GMLS	12	L						
GMRH	16							

■ Features: Can be used as work guides. The line contacting achieves more stable guiding than Round Pole Type.

■ Plate Type

Type	Material	Hardness
GIRS	SS400	-
GIRH	S45C	45-55HRC

Part Number Type	T	L 5mm Increment	F 5mm Increment	S 5mm Increment	S1 1mm Increment	Unit Price	
						GIRS	GIRH
GIRS	6	100~300	20~60	25~50	13 ≤ S1 ≤ S-12		
GIRS	9						
GIRH	12						
GIRH	16						

Ordering Example: Part Number Type D, T - Mounting Side - L - F - S - S1 - (MR, TA)

Example: GMRS9 - R - 150 - 30 - 25 - 13 - TA9 MR

Alterations	Code	Spec.
	MR	Alters Mounting Holes to Round Holes. Ordering Code: MR ⚠ Applicable to Plate Type only.
	TA	Alters the mounting plate thickness from 6mm to 9mm, or to 12mm. Ordering Code: TA9, TA12 ⚠ Applicable to Round Pole Type only.

■ Features: Can be used as work guides. The ribs make for a rugged basic guide.

■ Ribbed Type

RGHK

Material: SS400

Part Number Type	T	L Selection	M Mounting Screw Hole	A	P	(R)	B	K	Unit Price				
									RGHK				
									L 75	L 100	L 125	L 150	L 200
RGHK	6	75	M8	60	33	8	11	28					
		100	M10										
	9	125	M10	75	48	15	11	19					
		200	M12										

Ordering Example: Part Number Type T - L - M

Example: RGHK 6 - 125 - M8

■ Guide Plates

CPGP

Material: S45C
Hardness: 25~30HRC

Part Number Type	A	L Selection	Unit Price
CPGP	20	60 75 90	

⚠ Use in a pair for the left and right sides.
⚠ Flatness: 0.2 or lower

Ordering Example: Part Number - L

Example: CPGP20 - 75