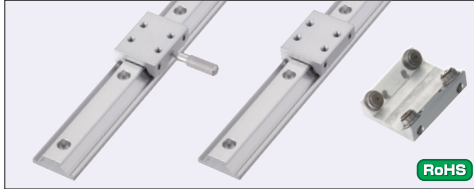


# Simplified Slide Rails

Load Rating: 49N~99N/pc

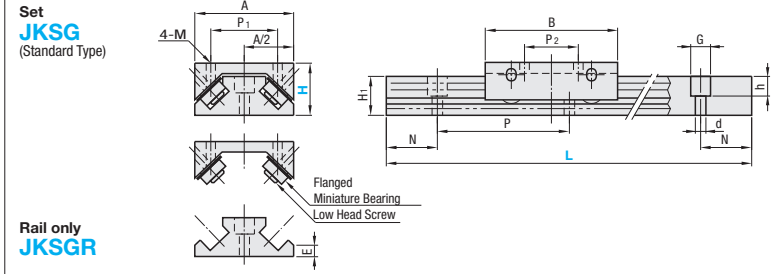
Aluminum, With Ball Bearing / Position Locking Type

■ Features: Lightweight since made of Aluminum. Sliders are Four Mounting Screw Type.



Type		Part Name	Material	Surface Treatment
Set (Slider 1 pc. + Rail 1 pc.)	JKSG (Standard Type)	JKSGR	Aluminum	Hard Clear Anodize
	JKSC (Position Locking Type)	JKSGR	Aluminum	Hard Clear Anodize

Part Name	Material	Surface Treatment
Slider	Aluminum	Hard Clear Anodize
Rail	Aluminum	Hard Clear Anodize
Screw for Tentative Locking	SUS304	-
Tip	Polyacetal	-



⚠ Use in places where guides are subjected to moment load is not recommended.

Part Number	Slider Dimensions										Guide Rail Dimensions				Load Rating N (kgf) per Slider
	Type	H	A	B	P <sub>1</sub>	P <sub>2</sub>	M	C	D	H <sub>1</sub>	E	dxGxh	N	P	
Set															
Standard Type	JKSG	10	20	30	13	13	3	24	6	7.5	1.8	3.5x6x4	7.5	40	49(5)
Position Locking Type	JKSC	13	23	30	15	11	3	23.5	6	9	2.7	3.5x6x4	10	50	59(6)
Rail only	JKSGR	16	30	40	19	16	3	32	10	12	3.5	3.5x6x7	15	40	79(8)
		16A	30	40	20	14	5	32	10	12	3.5	3.5x6x7	15	40	79(8)
		24	40	60	28	22	5	29	10	16	4.5	6x9.5x10	20	60	99(10)

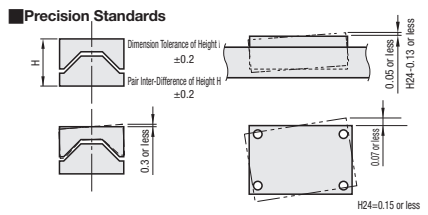
Ordering Example

Part Number	L	(S)
JKSG13	170	(Set)
JKSGR24	580	(Rail only)
JKSC13	370	(Position Locking Type)

H	L	Effective Stroke Slider 1 pc.	Unit Price			Addable Slider Qty.
			JKSG	JKSC	JKSGR	
55	19				-	
95	59				1~2	
135	99				1~3	
175	139				1~4	
215	179				1~6	
255	219				1~7	
295	259				1~8	
335	299				1~10	
375	339					
415	379					
455	419					
495	459					
535	499					
575	539					
615	579					
70	34					1
120	84					1~3
170	134				1~4	
220	184				1~6	
270	234				1~8	
320	284				1~9	
370	334				1~10	
420	384					
470	434					
520	484					
570	534					
620	584					
670	634					

H	L	Effective Stroke Slider 1 pc.	Unit Price			Addable Slider Qty.
			JKSG	JKSC	JKSGR	
70	24				-	
110	64				1	
150	104				1~2	
190	144				1~3	
230	184				1~4	
270	224				1~5	
310	264				1~6	
350	304				1~7	
390	344				1~8	
430	384				1~9	
470	424				1~10	
510	464					
550	504					
590	544					
630	584					
670	624					
710	664					
100	34					1
160	94					1~2
220	154					1~3
280	214				1~4	
340	274				1~5	
400	334				1~6	
460	394				1~7	
520	454				1~8	
580	514				1~9	
640	574				1~10	
700	634					
760	694					

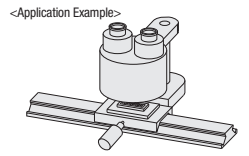
- Features of Simplified Slide Rails
- Linear mechanisms such as simplified fixtures can be built at an affordable price.
  - As many sliders and rails can be added as necessary.
  - Height (H), length (L) and mounting pitches (N, P) are in common with Miniature Linear Guides. However, for H13 Type, P=50 (for Miniature Slide Guides, P=25).
  - Both sliders and rails are made of aluminum (anodized) to achieve light weight.



⚠ Effective stroke is the dimension value with a margin of approx. 3mm set from each end to avoid dropout of sliders.

■ Position Locking Type (JKSC)  
Please use for retaining horizontally-placed Linear Rail Slider at a specified position.  
(Usage Example: Quick positioning for inspected workpieces)

H	Retaining Force (kg)
10	0.5
13	0.5
16	1.0
16A	1.0
24	1.2



\* Refer to the table above for retaining force (reference values).  
Retaining position alters when external force larger than the retaining force is applied.  
\* To use simplified slide rails in vertical or inclined states, provide them with external structures to prevent sliders from falling off.  
\* Retaining force (reference value) is the value when the tightening force of slider fixing screw for Locking Type is set to 0.1N·m. If tightening force exceeds 0.1N·m, screw tip can be broken.

Alterations

Alterations	Code	Spec.
Standard Type	S	Sliders are added. Please specify additional slider quantity after S and C. Please refer to the price list for maximum quantity of addable sliders.
Position Locking Type	C	Sliders are added. Please specify additional slider quantity after S and C. Please refer to the price list for maximum quantity of addable sliders.

Selection Example

Additional Slider Qty.	Ordering Code	Slider Total Qty.
5	JKSG16-710-S5	6
1	JKSG16-510-S1-C2	4

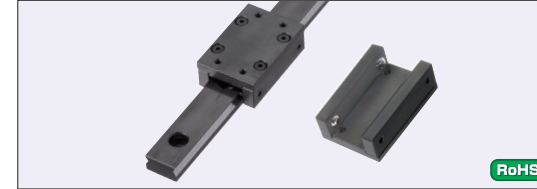
⚠ Added sliders are of the same H dimension as that of the original part number model.  
⚠ When ordering 50 or more identical sliders at a time, please request a quotation.  
⚠ Not applicable when ordering rails only.

# Simplified Slide Rails

Load Rating: 68N, 147N/pc

Steel, With Ball Rollers

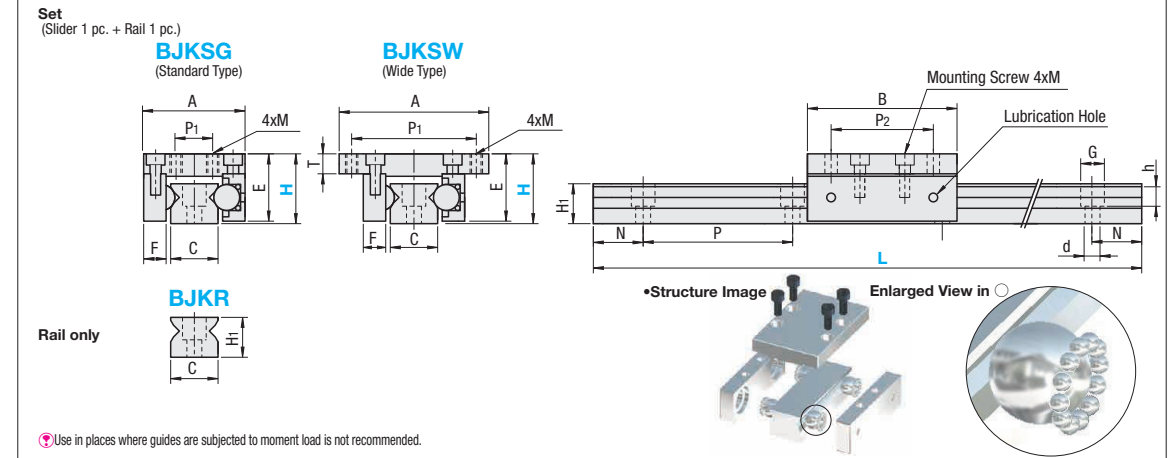
■ Features: Linear Rail made of carbon steel.



Type		Part Name	Material	Surface Treatment
Set (Slider 1 pc. + Rail 1 pc.)	BJKSG (Standard Type)	BJKR	S45C	Black Oxide
	BJKSW (Wide Type)	BJKR	S45C	Black Oxide*

Part Name	Material	Surface Treatment
Slider	S45C	Black Oxide
Rail	S45C	Black Oxide*
Ball	SUS440C	-
Mounting Screw	SCM435	Black Oxide

\* Except Sliding Contact Surface



⚠ Use in places where guides are subjected to moment load is not recommended.

Part Number	Slider Dimensions										Guide Rail Dimensions				Mounting Low Head Screws	Load Rating N (kgf) per Slider			
	Type	H	A	B	T	E	F	P <sub>1</sub>	P <sub>2</sub>	M	H <sub>1</sub>	C	dxGxh	N			P		
Set																			
Standard Type	BJKSG	16	30	44	44	4	15	6	13	37	34	3	9	16	4.5x8x5.5	15	40	M3x6	68(7)
Wide Type	BJKSW	20	30	44	44	8	19	6	13	37	34	3	9	16	4.5x8x5.5	15	40	M3x8	68(7)
Rail only	BJKR	24	41	60	60	4	23	9	15	50	41	4	16	19	6x8.5x9	20	60	M4x6	147(15)
		28	41	60	60	8	27	9	15	50	41	5	16	19	6x8.5x9	20	60	M4x8	147(15)

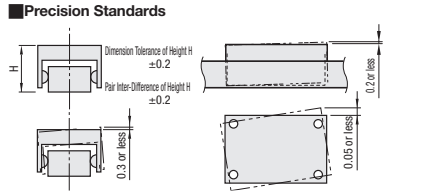
Ordering Example

Part Number	L	(S)
BJKSG28	400	(Set)
BJKR24	160	(Rail only)

H	L	Effective Stroke Slider 1 pc.	Unit Price			Addable Slider Qty.
			Standard Type	Wide Type	Rail only	
70	20				-	
110	60				1	
150	100				1~2	
190	140				1~3	
230	180				1~4	
270	220				1~5	
310	260				1~6	
350	300				1~7	
390	340				1~8	
430	380				1~9	
470	420				1~10	
510	460					
550	500					
590	540					
630	580					
670	620					
710	660					
750	700					
790	740					
70	20					-
110	60				1	
150	100				1~2	
190	140				1~3	
230	180				1~4	
270	220				1~5	
310	260				1~6	
350	300				1~7	
390	340				1~8	
430	380				1~9	
470	420				1~10	
510	460					
550	500					
590	540					
630	580					
670	620					
710	660					
750	700					
790	740					

H	L	Effective Stroke Slider 1 pc.	Unit Price			Addable Slider Qty.
			Standard Type	Wide Type	Rail only	
100	34				-	
160	94				1	
220	154				1~2	
280	214				1~3	
340	274				1~4	
400	334				1~5	
460	394				1~6	
520	454				1~7	
580	514				1~8	
640	574				1~9	
100	34				-	
160	94				1	
220	154				1~2	
280	214				1~3	
340	274				1~4	
400	334				1~5	
460	394				1~6	
520	454				1~7	
580	514				1~8	
640	574				1~9	

- Features of Simplified Slide Rails
- Linear mechanisms such as simplified fixtures can be built at an affordable price. Best suited when more secure slide rails are required than aluminum products on P641 and P647.)
  - As many sliders and rails can be added as necessary.
  - Height (H), length (L) and mounting pitches (N, P) are in common with Linear Guides.



Alterations

Alterations	Code	Spec.
Standard Type	S	Sliders are added. Please specify additional slider quantity after S and W. Please refer to the price list for maximum quantity of addable sliders.
Wide Type	W	Sliders are added. Please specify additional slider quantity after S and W. Please refer to the price list for maximum quantity of addable sliders.

Selection Example

Additional Slider Qty.	Ordering Code	Slider Total Qty.
5	BJKSG16-510-S5	6
1	BJKSG16-510-S1-W2	4

⚠ Added sliders are of the same H dimension as that of the original part number model.  
⚠ When ordering 50 or more identical sliders at a time, please request a quotation.  
⚠ Not applicable when ordering rails only.

⚠ Effective stroke is the dimension value with a margin of approx. 3mm set from each end to avoid dropout of sliders.