

BJ739

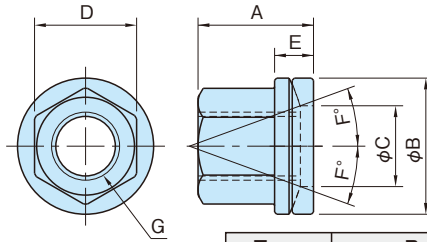
SPHERICAL FLANGE ASSEMBLIES



(Steel)



(Stainless Steel)



Type	Body
BJ739	Steel (S45C) Quenched and tempered Black oxide finish
BJ739-SUS	Stainless Steel (SUS316)

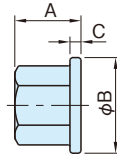
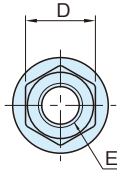
Steel	Stainless Steel	A	B	C	D	E	F	G	Weight (g)
Part Number	Part Number								
BJ739-06001	BJ739-06001-SUS	10.7	13	7	10	4.3	2	M 6×1	8
BJ739-08001	BJ739-08001-SUS	13.5	18	9.5	13	5.2		M 8×1.25	13
BJ739-10001	BJ739-10001-SUS	17	22	12	17	6	2.5	M10×1.5	27
BJ739-12001	BJ739-12001-SUS	20.5	26	15	19	7.5	3	M12×1.75	31
BJ739-16001	-	27	32	19	24	9	2.5	M16×2	79
BJ739-20001	-	34.5	40	23	30	12		M20×2.5	149

BJ740**FLANGE NUTS**

Steel

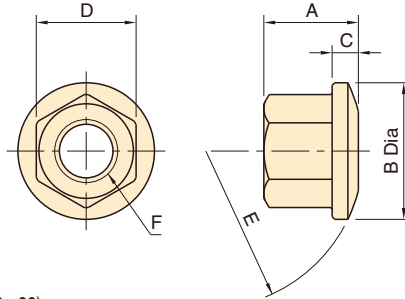


Stainless Steel



Type	Body
BJ740-06~20	Steel(S45C) Quenched and tempered Black oxide finish Heat treated to HRC33-39
BJ740-24	Steel Black oxide finish
BJ740-SUS	Stainless Steel(SUS316)

Steel	Stainless Steel	A	B	C	D	E	weight (g)
Part Number	Part Number						
BJ740-06001	BJ740-06001-SUS	9	13	2	10	M 6×1	6
BJ740-08001	BJ740-08001-SUS	12	18	2.5	13	M 8×1.25	11
BJ740-10001	BJ740-10001-SUS	15	22	3	17	M10×1.5	24
BJ740-12001	BJ740-12001-SUS	18	26		19	M12×1.75	34
BJ740-16001	-	24	32	4	24	M16×2	67
BJ740-20001	-	30	40		30	M20×2.5	126
BJ740-24001	-	36	45	6	36	M24×3	230

BJ741**SPHERICAL FLANGE NUTS**

Material : S45C steel
 Heat Treat : Quenched and tempered (Rc33 - 39)
 Finish : Black oxide

Part Number	A	B	C	D	E	F	Weight (g)
BJ741-06011	9	13	2.5	10	R15	M 6x1	6
BJ741-08011	12	18	3.5	13	R20	M 8x1.25	11
BJ741-10011	15	22	4	17	R25	M10x1.5	24
BJ741-12011	18	26	5	19	R30	M12x1.75	34
BJ741-16011	24	32	6	24	R35	M16x2	67
BJ741-20011	30	40	7.5	30	R40	M20x2.5	126

Application Example