

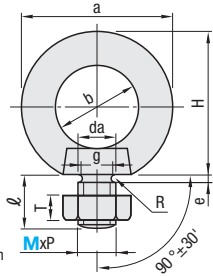
# Lifting Eyebolts / Wing Hinge Screws

# Wing Screws / Wing Nuts / Button Head Cap Screws / Special Tools

## Lifting Eyebolts

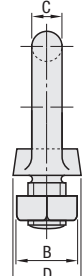
### CHIC SCHI

(Stainless Steel)

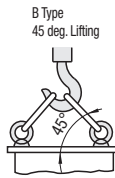
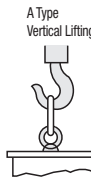


Screw Precision  
JIS1168

RoHS



**CHIC**  
Material: SS400  
Surface Treatment: Trivalent Chromate Plating  
Accessory: Nut 1 pc.



**SCHI**  
Material: SUS304 (Electrolytic Polishing)  
Accessory: Nut 1 pc. (SUS304)

Part Number	Type	M	MxP	a	b	C	D	H	l	e	g	R	da	Nuts		CHIC		SCHI	
														A	T	Unit Price	Volume Discount Rate	Unit Price	Volume Discount Rate
CHIC SCHI	8	8	8x1.25	32.6	20	6.3	16	33.3	15	3	6	1	9.2	13	6.5	785(80)	785(80)		
	10	10	10x1.5	41	25	8	20	41.5	18	4	7.7	1.2	11.2	17	8	1471(150)	1471(150)		
	12	12	12x1.75	50	30	10	25	51	22	5	9.4	1.4	14.2	19	10	2157(220)	2157(220)		
	16	16	16x2.0	60	35	12.5	30	60	27	5	13	1.6	18.2	24	13	4413(450)	4413(450)		
	20	20	20x2.5	72	40	16	35	71	30	6	16.4	2	22.4	30	16	6178(630)	6178(630)		

Ordering Example  
Part Number  
CHIC12

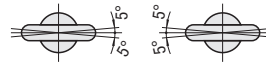
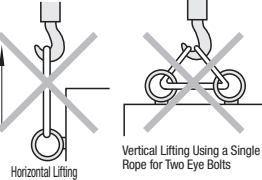


Caution

Bad Example

Avoid the applications shown below.

When using a pair of eye bolts for lifting, mount them in alignment as shown.

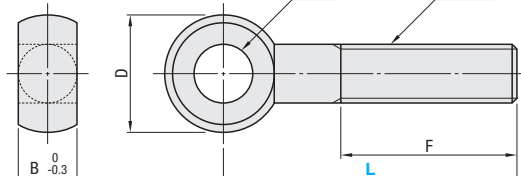


## Wing Hinge Screws

### DNDN



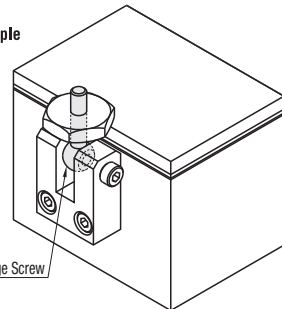
RoHS



Material: SUS304 Equivalent



Example



Part Number	Type	P	L	D	B	M	F	Unit Price	Volume Discount Rate
DNDN	6	30	12	6	6	22			
		50				30			
	8	30	16	8	8	20			
		50				30			
	10	50	20	10	10	30			
		70				40			
	12	50				50			
		80	24	12	12	45			
	16	100				60			
		100	32	16	16	50			

Ordering Example  
Part Number  
DNDN6 - L  
- 30

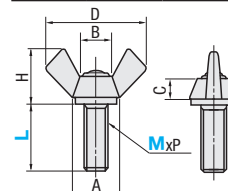
## Wing Screws / Wing Nuts



RoHS

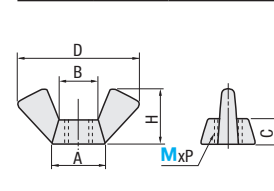
### Wing Screws

Type	Material	Surface Treatment
CHOB	SS Cold Forging	Trivalent Chromate
CHBS	SUS304 Equivalent	-



### Wing Nuts

Type	Material	Surface Treatment
CHON	SS Cold Forging	Trivalent Chromate
CHNS	SUS304 Equivalent	-



### Wing Screws Class 2

MxP	A (Min.)	B	C (Min.)	D	H
3x0.5	6.5	4	3	17	9
4x0.7	8	6	4	21	11
5x0.8	10	7	4.5	27	13
6x1.0	13	10	6	31	16
8x1.25	16	12	7.5	36	18

### Wing Nuts Class 2

MxP	A (Min.)	B	C (Min.)	D	H
3x0.5	7.5	4	3	17	9
4x0.7	8	6	4	21	11
5x0.8	10	7	4.5	27	13
6x1.0	13	10	6	31	16
8x1.25	16	12	7.5	36	18
10x1.5	20	16	9	48	23

## Wing Screws

Part Number	Type	M	L	CHOB		CHBS							
				Unit Price	Volume Discount Rate	Unit Price	Volume Discount Rate						
CHOB CHBS (Stainless Steel)	3	-	6	1 ~ 19 pc(s)	20 ~ 49 pc(s)	50 ~ 99 pc(s)	100 ~ 500 pc(s)						
				1 ~ 19 pc(s)	20 ~ 200 pc(s)	1 ~ 19 pc(s)	200 ~ 500 pc(s)						
	4	-	8	1 ~ 19 pc(s)	20 ~ 49 pc(s)	50 ~ 99 pc(s)	100 ~ 500 pc(s)						
				1 ~ 19 pc(s)	20 ~ 200 pc(s)	1 ~ 19 pc(s)	200 ~ 500 pc(s)						
				5	-	10	1 ~ 19 pc(s)	20 ~ 49 pc(s)	50 ~ 99 pc(s)	100 ~ 500 pc(s)			
							1 ~ 19 pc(s)	20 ~ 200 pc(s)	1 ~ 19 pc(s)	200 ~ 500 pc(s)			
							6	-	12	1 ~ 19 pc(s)	20 ~ 49 pc(s)	50 ~ 99 pc(s)	100 ~ 500 pc(s)
										1 ~ 19 pc(s)	20 ~ 200 pc(s)	1 ~ 19 pc(s)	200 ~ 500 pc(s)
	8	-	15	1 ~ 19 pc(s)	20 ~ 49 pc(s)	50 ~ 99 pc(s)	100 ~ 500 pc(s)						
				1 ~ 19 pc(s)	20 ~ 200 pc(s)	1 ~ 19 pc(s)	200 ~ 500 pc(s)						
				10	-	20	1 ~ 19 pc(s)	20 ~ 49 pc(s)	50 ~ 99 pc(s)	100 ~ 500 pc(s)			
							1 ~ 19 pc(s)	20 ~ 200 pc(s)	1 ~ 19 pc(s)	200 ~ 500 pc(s)			
12				-	25	1 ~ 19 pc(s)	20 ~ 49 pc(s)	50 ~ 99 pc(s)	100 ~ 500 pc(s)				
						1 ~ 19 pc(s)	20 ~ 200 pc(s)	1 ~ 19 pc(s)	200 ~ 500 pc(s)				

## Wing Nuts

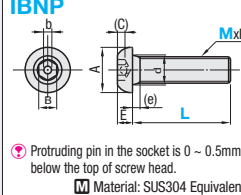
Part Number	Type	M	Unit Price	Volume Discount Rate
			1 ~ 99 pc(s)	100 ~ 500 pc(s)
CHON		3		
		4		
		5		
		6		
		8		
		10		
CHNS (Stainless Steel)		3		
		4		
		5		
		6		
		8		
		12		

Ordering Example  
Part Number  
CHOB6-12  
CHON4

## Tamper Proof Button Head Cap Screws



RoHS



Protruding pin in the socket is 0 ~ 0.5mm below the top of screw head.  
Material: SUS304 Equivalent

MxP (Coarse)	A	E	B	b	(C) (Min.)	d (Max.)	(e) (Max.)
3x0.5	5.7	1.65	2	1.0	1.04	3.6	1
4x0.7	7.6	2.2	2.5	1.1	1.3	4.7	1.4
5x0.8	9.5	2.75	3	1.3	1.56	5.7	1.6
6x1.0	10.5	3.3	4	1.6	2.08	6.8	2
8x1.25	14	4.4	5	2	2.6	9.2	2.5

Part Number	Type	M-L	Unit Price	Volume Discount Rate							
IBNP	3	-	1 ~ 99 pc(s)	100 ~ 200 pc(s)							
			1 ~ 99 pc(s)	100 ~ 200 pc(s)							
	4	-	8	1 ~ 99 pc(s)	100 ~ 200 pc(s)						
				1 ~ 99 pc(s)	100 ~ 200 pc(s)						
				5	-	10	1 ~ 99 pc(s)	100 ~ 200 pc(s)			
							1 ~ 99 pc(s)	100 ~ 200 pc(s)			
							6	-	12	1 ~ 99 pc(s)	100 ~ 200 pc(s)
										1 ~ 99 pc(s)	100 ~ 200 pc(s)
	8	-	15	1 ~ 99 pc(s)	100 ~ 200 pc(s)						
				1 ~ 99 pc(s)	100 ~ 200 pc(s)						
				10	-	20	1 ~ 99 pc(s)	100 ~ 200 pc(s)			
							1 ~ 99 pc(s)	100 ~ 200 pc(s)			
12				-	25	1 ~ 99 pc(s)	100 ~ 200 pc(s)				
						1 ~ 99 pc(s)	100 ~ 200 pc(s)				

## Dedicated Wrenches



Part Number	Type	No.	Applicable Screw	L	l	d	B	Unit Price	Volume Discount Rate
IBKPL		3	M3	52	16	1.2	2		
		4	M4	58.5	20.5	1.3	2.5		
		5	M5	66	23	1.5	3		
		6	M6	74	29	1.8	4		
8		M8	85	33	2.3	5			

Ordering Example  
Part Number  
IBNP3-6  
IBKPL3